

LOEWE®

Plant Disease Diagnostics

2019

ELISA Products

Rapid Tests

Immuno Fluorescence

Molecular Diagnostics

TuMV on Petunia

LOEWE® Biochemical GmbH 2019

Dear Colleagues,

We have the pleasure to present to you our new catalog 2019!

Since more than 30 years LOEWE® is known as one of the leading providers for Plant Disease Diagnostics. Our main directive is to provide innovative and complete solutions for the detection of plant viruses, bacteria, fungi and phytoplasmas:

- **ELISA sets and kits** - for more than 160 plant viruses, bacteria, and fungi
- **PCR and RNA-PCR kits** – pre-validated and shipped at room temperature
- **LOEWE®FAST rapid tests** - for easy and fast detection of pathogens
- **Immuno fluorescence antisera** - also available as convenient IF-kits

Contact and Order Information

Direct and immediate contact with our customers is one of our main objectives. Our products can be ordered directly from LOEWE® Biochemica GmbH, Sauerlach, Germany.

For ordering please contact us by e-mail to sales@loewe-info.com or register with our web-shop www.loewe-info.com.

In addition, our products are available through a worldwide net of authorized distributors. Please visit our website: www.loewe-info.com/delivery.html to find a representative in your region.

Our team is looking forward to help you with any questions and inquiries!

Sincerely,

Dr. Caroline Freye-Minks

Dr. Renate Loewe

LOEWE®

Mühlweg 2a
82054 Sauerlach
Germany
Phone: (+49) 8104 61620
Fax: : (+49) 8104 61648
E-Mail: sales@loewe-info.com



Molecular Diagnostics	Page 4-10
Supplements for Molecular Diagnostics	Page 5
One-Tube One-Step RNA PCR - Viruses	Page 5-7
DNA PCR Products	Page 7-10
DNA PCR Products – Phytoplasma	Page 7-8
DNA PCR Products – Bacteria	Page 8-10
DNA PCR Products – Fungi	Page 10
LOEWE®FAST Rapid Tests	Page 11-14
ELISA Products	Page 15-59
ELISA Products – Viruses	Page 16-51
ELISA Products– Bacteria	Page 52-58
ELISA Products - Fungi	Page 59
Immuno Fluorescence Products	Page 60-64
Immuno Fluorescence - Antisera	Page 61-63
Immuno Fluorescence - Secondary Antibodies	Page 63-64
Immuno Fluorescence - Disposables	Page 64
ELISA Chemicals	Page 64-65
ELISA Disposables	Page 65
AGB - General Terms for Sales and Delivery	Page 66-67

Product Information

© LOEWE*Biochemica GmbH 2019

The PCR technique allows specific and sensitive detection of plant pathogens when serological reagents are not available or a second method is needed for validation.

We offer PCR reagents and kits for DNA amplification of plant bacteria, phytoplasma, and fungi and complete RNA PCR reaction kits for reverse transcriptase PCR of RNA plant viruses.

For the detection of RNA Viruses

RNA PCR Complete Reaction Kits (ONE-Tube ONE-Step)

- ✓ Premix (Primers, dNTPs)
- ✓ DNA-Polymerase
- ✓ Reverse Transcriptase: M-MLV, RNase H-
- ✓ Reaction Buffer
- ✓ PCR-grade Water
- ✓ Dithiothreitol (DTT)
- ✓ Positive Control (DNA based)
- ✓ Negative Control (DNA based)

Thermostable!
All kits ship at
room
temperature!

For the detection of Bacteria, Fungi, and Phytoplasmas

DNA PCR Set :

- ✓ Premix (Primers, dNTPs)
- ✓ Positive Control (DNA based)
- ✓ Negative Control (DNA based)

DNA Complete Reaction Kit:

- ✓ Premix (Primers, dNTPs)
- ✓ DNA-Polymerase
- ✓ Reaction Buffer
- ✓ PCR-grade Water
- ✓ Positive Control (DNA based)
- ✓ Negative Control (DNA based)

DNA and RNA Extraction Kits

The extraction kits are specially optimized for the extraction and purification of DNA or RNA from plant material (leaves, stems, roots, flowers). One kit is sufficient for 50 extractions

Product Section

Supplements for Molecular Kits			
Plant DNA and RNA Extraction Kits and Chemicals			Size
0845DNA/050	Plant DNA Extraction Kit produced for LOEWE® by Analytic Jena		50 extractions
0945RNA/050	Plant RNA Extraction Kit produced for LOEWE® by Analytic Jena		50 extractions
0840 LAD/050	DNA Ladder Marker MW range 100 - 3000 bp		50µg
0850DYE/0010	DNA Loading Dye blue 6x		1ml
One-Tube One-Step RNA PCR - Viruses			
09103	Apple Chlorotic Leaf Spot Virus RNA PCR	Size	
09103C/100	Apple Chlorotic Leafspot Virus complete RNA PCR reaction kit		100 reactions
09103PC	Positive PCR Control Apple Chlorotic Leafspot Virus (DNA-based) specific only for primers provided with 09103C/100		1 vial (10 reactions)
09103NC	Negative PCR Control Apple Chlorotic Leafspot Virus (DNA-based)		1 vial (10 reactions)
09054	Apple Mosaic Virus RNA PCR	Size	
09054C/100	Apple Mosaic Virus complete RNA PCR reaction kit		100 reactions
09054PC	Positive PCR Control Apple Mosaic Virus (DNA-based) specific only for primers provided with 09054C/100		1 vial (10 reactions)
09054NC	Negative PCR Control Apple Mosaic Virus Virus (DNA-based)		1 vial (10 reactions)
09085	Apple Stem Grooving Virus RNA PCR	Size	
09085C/100	Apple Stem Grooving Virus complete RNA PCR reaction kit		100 reactions
09085PC	Positive PCR Control Apple Stem Grooving Virus (DNA-based) specific only for primers provided with 09085C/100		1 vial (10 reactions)
09085 NC	Negative PCR Control Apple Stem Grooving Virus (DNA-based)		1 vial (10 reactions)
09093	Cherry Leafroll Virus RNA PCR (Detection of published isolates)	Size	
09093C/100	Cherry Leafroll Virus complete RNA PCR reaction kit		100 reactions
09093PC	Positive PCR Control Cherry Leafroll Virus (DNA-based) specific only for primers provided with 09093C/100		1 vial (10 reactions)
09093NC	Negative PCR Control Cherry Leafroll Virus (DNA-based)		1 vial (10 reactions)
09099	Citrus Tristeza Virus RNA PCR	Size	
09099C/100	Citrus Tristeza Virus complete RNA PCR reaction kit		100 reactions
09099PC	Positive PCR Control Citrus Tristeza Virus (DNA-based) specific only for primers provided with 09099C/100		1 vial (10 reactions)
09099NC	Negative PCR Control Citrus Tristeza Virus (DNA-based)		1 vial (10 reactions)
09110	Cucurbit Vein Yellowing Virus RNA PCR	Size	
09110C/100	Cucurbit Vein Yellowing Virus complete RNA PCR reaction kit		100 reactions
09110PC	Positive PCR Control Cucurbit Vein Yellowing Virus (DNA-based) specific only for primers provided with 09110C/100		1 vial (10 reactions)
09110NC	Negative PCR Control Cucurbit Vein Yellowing Virus (DNA-based)		1 vial (10 reactions)

Product Section

09505	Impatiens Necrotic Spot Virus RNA PCR	Size	
09505C/100	Impatiens Necrotic Spot Virus complete RNA PCR reaction kit	100 reactions	
09505PC	Positive PCR Control Impatiens Necrotic Spot Virus (DNA-based) specific only for primers provided with 09505C/100	1 vial (10 reactions)	
09505NC	Negative PCR Control Impatiens Necrotic Spot Virus (DNA-based)	1 vial (10 reactions)	
09128	Pepino Mosaic Virus RNA PCR	Size	
09128C/100	Pepino Mosaic Virus complete RNA PCR reaction kit	100 reactions	
09128PC	Positive PCR Control Pepino Mosaic Virus (DNA-based) specific only for primers provided with 09128/100	1 vial (10 reactions)	
09128NC	Negative PCR Control Pepino Mosaic Virus (DNA-based)	1 vial (10 reactions)	
09186	Plum Pox Virus RNA PCR	Size	
09186C/100	Plum Pox Virus complete RNA PCR reaction kit	100 reactions	
09186PC	Positive PCR Control Plum Pox Virus (DNA-based) specific only for primers provided with 09186C/100	1 vial (10 reactions)	
09186NC	Negative PCR Control Plum Pox Virus (DNA-based)	1 vial (10 reactions)	
09031	Potato Leafroll Virus RNA PCR	Size	
09031C/100	Potato Leafroll Virus complete RNA PCR reaction kit	100 reactions	
09031PC	Positive PCR Control Potato Leafroll Virus (DNA-based) specific only for primers provided with 09031C/100	1 vial (10 reactions)	
09031NC	Negative PCR Control Potato Leafroll Virus (DNA-based)	1 vial (10 reactions)	
09003	Potato Mop Top Virus RNA PCR	Size	
09003C/100	Potato Mop Top Virus complete RNA PCR reaction kit	100 reactions	
09003PC	Positive PCR Control Potato Mop Top Virus (DNA-based) specific only for primers provided with 09003C/100	1 vial (10 reactions)	
09003NC	Negative PCR Control Potato Mop Top Virus (DNA-based)	1 vial (10 reactions)	
09038	Potato Virus Y RNA PCR	Size	
09038C/100	Potato Virus Y complete RNA PCR reaction kit	100 reactions	
09038PC	Positive PCR Control Potato Virus Y (DNA-based) specific only for primers provided with 09038C/100	1 vial (10 reactions)	
09038NC	Negative PCR Control Potato Virus Y (DNA-based)	1 vial (10 reactions)	
09041	Potyvirus universal RNA PCR	Size	
09041C/100	Poty Virus universal complete RNA PCR reaction kit	100 reactions	
09041PC	Positive PCR Control Poty Virus universal (DNA-based) specific only for primers provided with 09041C/100	1 vial (10 reactions)	
09041NC	Negative PCR Control Poty Virus universal (DNA-based)	1 vial (10 reactions)	
09115	Strawberry Latent Virus RNA PCR	Size	
09115/100	Strawberry Latent Virus complete RNA PCR reaction kit	100 reactions	
09115PC	Positive PCR Control Strawberry Latent Virus (DNA-based) specific only for primers provided with 09115C/100	1 vial (10 reactions)	
09115NC	Negative PCR Control Strawberry Latent Virus (DNA-based)	1 vial (10 reactions)	

Product Section

09184	Tobamovirus Broad Range RNA PCR	Size	
09184C/100	Tobamovirus Broad Range complete RNA PCR reaction kit	100 reactions	
09184PC	Positive PCR Control Tobamovirus (DNA-based) specific only for primers provided with 09184C/100	1 vial (10 reactions)	
09184NC	Negative PCR Control Tobamovirus Broad Range (DNA-based)	1 vial (10 reactions)	
09102	Tomato Chlorosis Virus RNA PCR	Size	
09102C/100	Tomato Chlorosis Virus complete RNA PCR reaction kit	100 reactions	
09102PC	Positive PCR Control Tomato Chlorosis Virus (DNA-based) specific only for primers provided with 09102C/100	1 vial (10 reactions)	
09102NC	Negative PCR Control Tomato Chlorosis Virus (DNA-based)	1 vial (10 reactions)	
09101	Tomato Infectious Chlorosis Virus RNA PCR	Size	
09101C/100	Tomato Infectious Chlorosis Virus complete RNA PCR reaction kit	100 reactions	
09101PC	Positive PCR Control Tomato Infectious Chlorosis Virus (DNA-based) specific only for primers provided with 09101C/100	1 vial (10 reactions)	
09101NC	Negative PCR Control Tomato Chlorosis Virus (DNA-based)	1 vial (10 reactions)	
09501	Tomato Spotted Wilt Virus RNA PCR	Size	
09501C/100	Tomato Spotted Wilt complete RNA PCR reaction kit	100 reactions	
09501PC	Positive PCR Control Tomato Spotted Wilt (DNA-based) specific only for primers provided with 09184C/100	1 vial (10 reactions)	
09501NC	Negative PCR Control (DNA-based)	1 vial (10 reactions)	
DNA PCR Products			
Phytoplasma			
08000	Apple Proliferation Group Phytoplasma PCR	Size	
	detects members of the Apple Proliferation group (Apple Proliferation, European Stone Fruit Yellows and Pear Decline Phytoplasma).		
08000S/100	Apple Proliferation Group Phytoplasma PCR set	100 reactions	
08000C/100	Apple Proliferation Group Phytoplasma complete PCR reaction kit	100 reactions	
08000PC	Positive PCR Control Apple Proliferation Group Phytoplasma	1 vial (10 reactions)	
08000 NC	Negative PCR Control Apple Proliferation Group Phytoplasma	1 vial (10 reactions)	
08002	Aster Yellows Phytoplasma PCR	Size	
08002S/100	Aster Yellows Phytoplasma PCR set	100 reactions	
08002C/100	Aster Yellows Phytoplasma complete PCR reaction kit	100 reactions	
08002PC	Positive PCR Control Aster Yellows Phytoplasma	1 vial (10 reactions)	
08002NC	Negative PCR Control Aster Yellows Phytoplasma	1 vial (10 reactions)	
08003	Elm Yellows Phytoplasma PCR	Size	
08003S/100	Elm Yellows Phytoplasma PCR set	100 reactions	
08003C/100	Elm Yellows Phytoplasma complete PCR reaction kit	100 reactions	
08003PC	Positive PCR Control Elm Yellows Phytoplasma specific only for primers provided with 08003S/100 and 08003C/100	1 vial (10 reactions)	
08003NC	Negative PCR Control Elm Yellows Phytoplasma	1 vial (10 reactions)	

Product Section

08004	Stolbur Phytoplasma PCR	Size	
	detects the members of the Stolbur Phytoplasma group.		
08004S/100	Stolbur Phytoplasma PCR set	100 reactions	
08004C/100	Stolbur Phytoplasma complete PCR reaction kit	100 reactions	
08004PC	Positive PCR Control Stolbur Phytoplasma	1 vial (10 reactions)	
	specific only for primers provided with 08004S/100 and 08004C/100		
08004NC	Negative PCR Control Stolbur Phytoplasma	1 vial (10 reactions)	
08009	Universal Phytoplasma nested PCR	Size	
08009S/100	Universal Phytoplasma nested PCR Set	100 reactions	
08009C/100	Universal Phytoplasma nested complete PCR reaction kit	100 reactions	
08009PC	Positive PCR Control Universal Phytoplasma	1 vial (10 reactions)	
08009NC	Negative PCR Control Universal Phytoplasma	1 vial (10 reactions)	
DNA PCR Products			
Bacteria			
08154	Acidovorax avenae subsp. citrulli PCR	Size	
08154S/100	Acidovorax avenae subsp. citrulli PCR set	100 reactions	
08154C/100	Acidovorax avenae subsp. citrulli complete PCR reaction kit	100 reactions	
08154PC	Positive PCR Control Acidovorax avenae subsp. citrulli	1 vial (10 reactions)	
08154NC	Negative PCR Control Acidovorax avenae subsp. citrulli	1 vial (10 reactions)	
08058	Clavibacter michiganensis subsp. insidiosus PCR	Size	
08058S/100	Clavibacter michiganensis subsp. insidiosus PCR set	100 reactions	
08058C/100	Clavibacter michiganensis subsp. insidiosus complete PCR reaction kit	100 reactions	
08058PC	Positive PCR Control Clavibacter m. subsp. insidiosus	1 vial (10 reactions)	
08058NC	Negative PCR Control Clavibacter m. subsp. insidiosus	1 vial (10 reactions)	
08063	Clavibacter michiganensis subsp. michiganensis PCR	Size	
08063S/100	Clavibacter michiganensis subsp. michiganensis PCR set	100 reactions	
08063C/100	Clavibacter michiganensis subsp. michiganensis complete PCR reaction kit	100 reactions	
08063PC	Positive PCR Control Clavibacter m. subsp. michiganensis	1 vial (10 reactions)	
08063NC	Negative PCR Control Clavibacter m. subsp. michiganensis	1 vial (10 reactions)	
08064	Clavibacter michiganensis subsp. sepedonicus PCR	Size	
08064S/100	Clavibacter michiganensis subsp. sepedonicus PCR set	100 reactions	
08064C/100	Clavibacter michiganensis subsp. sepedonicus complete PCR reaction kit	100 reactions	
08064PC	Positive PCR Control Clavibacter m. subsp. sepedonicus	1 vial (10 reactions)	
	specific only for primers provided with 08064S/100 and 08064C/100		
08064NC	Negative PCR Control Clavibacter m. subsp. sepedonicus	1 vial (10 reactions)	
08010	Erwinia amylovora PCR	Size	
08010S/100	Erwinia amylovora PCR set	100 reactions	
08010C/100	Erwinia amylovora complete PCR reaction kit	100 reactions	
08010PC	Positive PCR Control E. amylovora	1 vial (10 reactions)	
08010NC	Negative PCR Control E. amylovora	1 vial (10 reactions)	

Product Section

08005	Erwinia amylovora nested PCR	Size	
08005S/100	Erwinia amylovora nested PCR set	100 reactions	
08005C/100	Erwinia amylovora nested complete PCR reaction kit	100 reactions	
08005PC	Positive PCR Control Erwinia amylovora	1 vial (10 reactions)	
08005NC	Negative PCR Control Erwinia amylovora	1 vial (10 reactions)	
08129	Pantoea stewartii subsp. stewartii PCR	Size	
08129S/100	Pantoea stewartii subsp. stewartii PCR set	100 reactions	
08129C/100	Pantoea stewartii subsp. stewartii complete PCR kit	100 reactions	
08129PC	Positive PCR Control Pantoea stewartii subsp. stewartii	1 vial (10 reactions)	
08129NC	Negative PCR Control Pantoea stewartii subsp. stewartii	1 vial (10 reactions)	
08056	Ralstonia solanacearum PCR	Size	
08056S/100	Ralstonia solanacearum PCR set	100 reactions	
08056C/100	Ralstonia solanacearum complete PCR reaction kit	100 reactions	
08056PC	Positive PCR Control Ralstonia solanacearum	1 vial (10 reactions)	
	specific only for primers provided with 08056S/100 and 08056C/100		
08056NC	Negative PCR Control Ralstonia solanacearum	1 vial (10 reactions)	
08170	Rhodococcus fascians pathogenic form PCR	Size	
08170S/100	Rhodococcus fascians pathogenic form PCR set	100 reactions	
08170C/100	Rhodococcus fascians pathogenic form complete PCR reaction kit	100 reactions	
08170PC	Positive PCR Control Rhodococcus fascians pathogenic form	1 vial (10 reactions)	
08170NC	Negative PCR Control Rhodococcus fascians pathogenic form	1 vial (10 reactions)	
08162	Xanthomonas arboricola pv. pruni PCR	Size	
08162S/100	X. arboricola pv. pruni PCR set	100 reactions	
08162C/100	X. arboricola pv. pruni complete PCR reaction kit	100 reactions	
08162PC	Positive PCR Control X. arboricola pv. pruni	1 vial (10 reactions)	
08162NC	Negative PCR Control X. arboricola pv. pruni	1 vial (10 reactions)	
08077	Xanthomonas hortorum pv. pelargonii PCR	Size	
08077S/100	Xanthomonas hortorum pv. pelargonii PCR set	100 reactions	
08077C/100	Xanthomonas hortorum pv. pelargonii complete PCR reaction kit	100 reactions	
08077PC	Positive PCR Control X. hortorum pv. pelargonii	1 vial (10 reactions)	
08077NC	Negative PCR Control X. hortorum pv. pelargonii	1 vial (10 reactions)	
08132	Xanthomonas oryzae PCR	Size	
	detect. of X. o. pv. oryzae and pv. oryzicola with the same primer pair		
08132S/100	Xanthomonas oryzae PCR set	100 reactions	
08132C/100	Xanthomonas oryzae complete PCR reaction kit	100 reactions	
08132PC	Positive PCR Control Xanthomonas oryzae	1 vial (10 reactions)	
	specific only for primers provided with 08132S/100 and 08132C/100		
08132NC	Negative PCR control Xanthomonas oryzae	1 vial (10 reactions)	
08138	Xylophilus ampelinus PCR	Size	
08138S/100	Xylophilus ampelinus PCR set	100 reactions	
08138C/100	Xylophilus ampelinus complete PCR reaction kit	100 reactions	
08138PC	Positive PCR Control Xylophilus ampelinus	1 vial (10 reactions)	
08138NC	Negative PCR Control Xylophilus ampelinus	1 vial (10 reactions)	

Product Section

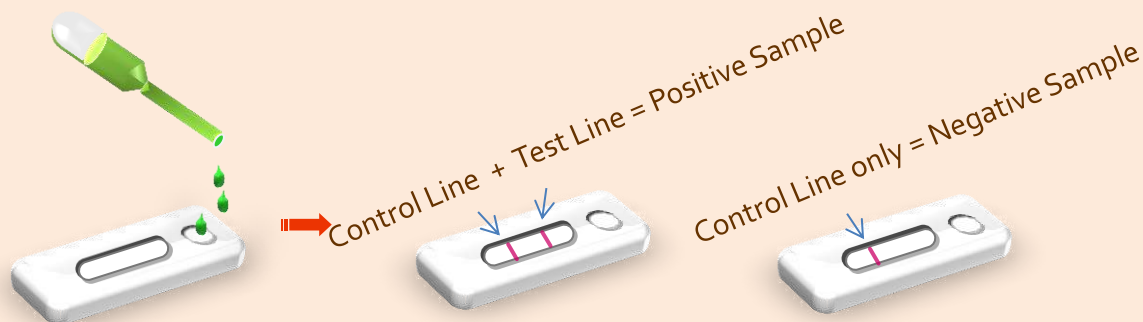
08119	Xylella fastidiosa PCR	Size	
08119S/100	Xylella fastidiosa PCR set	100 reactions	
08119C/100	Xylella fastidiosa complete PCR reaction kit	100 reactions	
08119PC	Positive PCR Control Xylella fastidiosa	1 vial (10 reactions)	
08119NC	Negative PCR Control Xylella fastidiosa	1 vial (10 reactions)	
DNA PCR Products			
Fungi			
08007	Fusarium culmorum PCR	Size	
08007S/100	Fusarium culmorum PCR set	100 reactions	
08007C/100	Fusarium culmorum complete PCR reaction kit	100 reactions	
08007PC	Positive PCR Control F. culmorum	1 vial (10 reactions)	
08007NC	Negative PCR Control F. culmorum	1 vial (10 reactions)	
08008	Fusarium graminearum PCR	Size	
08008S/100	Fusarium graminearum PCR set	100 reactions	
08008C/100	Fusarium graminearum complete PCR reaction kit	100 reactions	
08008PC	Positive PCR Control Fusarium graminearum	1 vial (10 reactions)	
08008NC	Negative PCR Control Fusarium graminearum	1 vial (10 reactions)	
08006	Phytophthora fragariae PCR	Size	
08006S/100	Phytophthora fragariae PCR set	100 reactions	
08006C/100	Phytophthora fragariae complete PCR reaction kit	100 reactions	
08006PC	Positive PCR Control Phytophthora fragariae	1 vial (10 reactions)	
08006NC	Negative PCR Control Phytophthora fragariae	1 vial (10 reactions)	

© LOEWE®Biochemica GmbH 2019

The LOEWE®FAST rapid test series is designed for reliable and specific detection of plant pathogens within minutes.

As stand-alone diagnostic tool these tests provide quick and easy assessment of suspicious plant material in the field or greenhouse without the need of a laboratory or specialized laboratory staff.

- ✓ **Fast - easy - on the spot**
- ✓ Specific detection of plant pathogens within minutes
- ✓ **Testing in the field or greenhouse without the need of a laboratory**
- ✓ **LOEWE®FAST kits for 5, 20, or 50 tests:**
 - single-use test cassettes
 - tubes with sample buffer
 - single-use pipettes for sample application
- ✓ **Additional supplements are:**
 - LF07810: Micro-pestles for sample grinding
 - LF07000BU/100: Sample buffer for preparation of mixed samples



LOEWE®FAST test kits are based on lateral flow technology using specific antibodies for the detection of plant pathogens. A positive sample will interact through antigen-antibody interaction at the test position (T), whereas a negative sample does not.

Product Section

LOEWE®FAST Rapid Tests			
LF07154	LOEWE®FAST Kit Acidovorax avanae subsp. citrulli	Size	
	For rapid detection of Acidovorax avanae in bacterial cultures		
LF07154/05	LOEWE®FAST Kit Acidovorax avanae subsp. citrulli	5 tests	
LF07154/20	LOEWE®FAST Kit Acidovorax avanae subsp. citrulli	20 tests	
LF07154/50	LOEWE®FAST Kit Acidovorax avanae subsp. citrulli	50 tests	
LF07054	LOEWE®FAST Kit Apple Mosaic Virus hop isolate	Size	
	For rapid detection of ApMV in suspected plant material		
LF07054/05	LOEWE®FAST Kit Apple Mosaic Virus hop isolate	5 tests	
LF07054/20	LOEWE®FAST Kit Apple Mosaic Virus hop isolate	20 tests	
LF07054/50	LOEWE®FAST Kit Apple Mosaic Virus hop isolate	50 tests	
LF07158	LOEWE®FAST Kit Botrytis cinerea grapevine isolate	Size	
	For rapid detection of B. cinerea		
LF07158/05	LOEWE®FAST Kit Botrytis cinerea grapevine isolate	5 tests	
LF07158/20	LOEWE®FAST Kit Botrytis cinerea grapevine isolate	20 tests	
LF07158/50	LOEWE®FAST Kit Botrytis cinerea grapevine isolate	50 tests	
LF07063	LOEWE®FAST Kit Clavibacter m. subsp. michiganensis	Size	
	For rapid detection of C.m. subsp. michiganensis in bacterial cultures		
LF07063/05	LOEWE®FAST Kit Clavibacter m. subsp. michiganensis	5 tests	
LF07063/20	LOEWE®FAST Kit Clavibacter m. subsp. michiganensis	20 tests	
LF07063/50	LOEWE®FAST Kit Clavibacter m. subsp. michiganensis	50 tests	
LF07064	LOEWE®FAST Kit Clavibacter m. subsp. sepedonicus	Size	
	For rapid detection of C.m. subsp. sepedonicus in bacterial cultures		
LF07064/05	LOEWE®FAST Kit Clavibacter m. subsp. sepedonicus	5 tests	
LF07064/20	LOEWE®FAST Kit Clavibacter m. subsp. sepedonicus	20 tests	
LF07064/50	LOEWE®FAST Kit Clavibacter m. subsp. sepedonicus	50 tests	
LF07022	LOEWE®FAST Kit Cucumber Green Mottle Mosaic Virus	Size	
	For rapid detection of CGMMV in suspected leaves		
LF07022 /05	LOEWE®FAST Kit Cucumber Green Mottle Mosaic Virus	5 tests	
LF07022/20	LOEWE®FAST Kit Cucumber Green Mottle Mosaic Virus	20 tests	
LF07022/50	LOEWE®FAST Kit Cucumber Green Mottle Mosaic Virus	50 tests	
LF07186	LOEWE®FAST Kit Cucumber Mosaic Virus	Size	
	For rapid detection of CMV in suspected leaves		
LF07186/05	LOEWE®FAST Kit Cucumber Mosaic Virus	5 tests	
LF07186/20	LOEWE®FAST Kit Cucumber Mosaic Virus	20 tests	
LF07186/50	LOEWE®FAST Kit Cucumber Mosaic Virus	50 tests	
LF07505	LOEWE®FAST Kit Impatiens Necrotic Spot Virus	Size	
	For rapid detection of INSV in suspected leaves		
LF07505/05	LOEWE®FAST Kit Impatiens Necrotic Spot Virus	5 tests	
LF07505/20	LOEWE®FAST Kit Impatiens Necrotic Spot Virus	20 tests	
LF07505/50	LOEWE®FAST Kit Impatiens Necrotic Spot Virus	50 tests	

Product Section

LF07097	LOEWE®FAST Kit Melon Necrotic Spot Virus	Size	
	For rapid detection of MNSV in suspected leaves		
LF07097/05	LOEWE®FAST Kit Melon Necrotic Spot Virus	5 tests	
LF07097/20	LOEWE®FAST Kit Melon Necrotic Spot Virus	20 tests	
LF07097/50	LOEWE®FAST Kit Melon Necrotic Spot Virus	50 tests	
LF07128	LOEWE®FAST Kit Pepino Mosaic Virus	Size	
	For rapid detection of PepMV in suspected leaves		
LF07128/05	LOEWE®FAST Kit Pepino Mosaic Virus	5 tests	
LF07128/20	LOEWE®FAST Kit Pepino Mosaic Virus	20 tests	
LF07128/50	LOEWE®FAST Kit Pepino Mosaic Virus	50 tests	
LF07159	LOEWE®FAST Kit Pepper Veinal Mottle Virus	Size	
	For rapid detection of PVMV in suspected leaves		
LF07159/05	LOEWE®FAST Kit Pepper Veinal Mottle Virus	5 tests	
LF07159/20	LOEWE®FAST Kit Pepper Veinal Mottle Virus	20 tests	
LF07159/50	LOEWE®FAST Kit Pepper Veinal Mottle Virus	50 tests	
LF07037	LOEWE®FAST Kit Potato Virus X	Size	
	For rapid detection of PVX in suspected leaves		
LF07037/05	LOEWE®FAST Kit Potato Virus X	5 tests	
LF07037/20	LOEWE®FAST Kit Potato Virus X	20 tests	
LF07037/50	LOEWE®FAST Kit Potato Virus X	50 tests	
LF07038	LOEWE®FAST Kit Potato Virus Y	Size	
	For rapid detection of PVY in suspected leaves		
LF07038/05	LOEWE®FAST Kit Potato Virus Y	5 tests	
LF07038/20	LOEWE®FAST Kit Potato Virus Y	20 tests	
LF07038/50	LOEWE®FAST Kit Potato Virus Y	50 tests	
LF07051	LOEWE®FAST Kit Prune Dwarf Virus	Size	
	For rapid detection of PDV in suspected plant material		
LF07051/05	LOEWE®FAST Kit Prune Dwarf Virus	5 tests	
LF07051/20	LOEWE®FAST Kit Prune Dwarf Virus	20 tests	
LF07051/50	LOEWE®FAST Kit Prune Dwarf Virus	50 tests	
LF07052	LOEWE®FAST Kit Prunus Necrotic Ringspot Virus	Size	
	For rapid detection of PNRV in suspected plant material		
LF07052/05	LOEWE®FAST Kit Prunus Necrotic Ringspot Virus	5 tests	
LF07052/20	LOEWE®FAST Kit Prunus Necrotic Ringspot Virus	20 tests	
LF07052/50	LOEWE®FAST Kit Prunus Necrotic Ringspot Virus	50 tests	
LF07056	LOEWE®FAST Kit Ralstonia solanacearum	Size	
	For rapid detection of R. solanacearum in bacterial cultures		
LF07056/05	LOEWE®FAST Kit Ralstonia solanacearum	5 tests	
LF07056/20	LOEWE®FAST Kit Ralstonia solanacearum	20 tests	
LF07056/50	LOEWE®FAST Kit Ralstonia solanacearum	50 tests	

Product Section

LF07042	LOEWE®FAST Kit Tobacco Mosaic Virus	Size	
	For rapid detection of TMV in suspected leaves		
LF07042 /05	LOEWE®FAST Kit Tobacco Mosaic Virus	5 tests	
LF07042/20	LOEWE®FAST Kit Tobacco Mosaic Virus	20 tests	
LF07042/50	LOEWE®FAST Kit Tobacco Mosaic Virus	50 tests	
LF07047	LOEWE®FAST Kit Tomato Mosaic Virus	Size	
	For rapid detection of ToMV in suspected leaves		
LF07047/05	LOEWE®FAST Kit Tomato Mosaic Virus	5 tests	
LF07047/20	LOEWE®FAST Kit Tomato Mosaic Virus	20 tests	
LF07047/50	LOEWE®FAST Kit Tomato Mosaic Virus	50 tests	
LF07501	LOEWE®FAST Kit Tomato Spotted Wilt Virus	Size	
	For rapid detection of TSWV in suspected leaves		
LF07501/05	LOEWE®FAST Kit Tomato Spotted Wilt Virus	5 tests	
LF07501/20	LOEWE®FAST Kit Tomato Spotted Wilt Virus	20 tests	
LF07501/50	LOEWE®FAST Kit Tomato Spotted Wilt Virus	50 tests	
LF07509	LOEWE®FAST Kit TSWV, TCSV, GRSV	Size	
	For rapid detection of TSWV, TCSV, GRSV in suspected leaves		
LF07509 /05	LOEWE®FAST Kit TSWV, TCSV, GRSV	5 tests	
LF07509/20	LOEWE®FAST Kit TSWV, TCSV, GRSV	20 tests	
LF07509/50	LOEWE®FAST Kit TSWV, TCSV, GRSV	50 tests	
LF07077	LOEWE®FAST Kit Xanthomonas hortorum pv. pelargonii	Size	
	For rapid detection of X. h. pv. pelargonii in bacterial cultures		
LF07077/05	LOEWE®FAST Kit X. hortorum pv. pelargonii	5 tests	
LF07077/20	LOEWE®FAST Kit X. hortorum pv. pelargonii	20 tests	
LF07077/50	LOEWE®FAST Kit X. hortorum pv. pelargonii	50 tests	
LF07119	LOEWE®FAST Kit Xylella fastidiosa	Size	
	For rapid detection of Xylella fastidiosa in bacterial cultures only!		
LF07119/05	LOEWE®FAST Kit Xylella fastidiosa	5 tests	
LF07119/20	LOEWE®FAST Kit Xylella fastidiosa	20 tests	
LF07119/50	LOEWE®FAST Kit Xylella fastidiosa	50 tests	
LF07138	LOEWE®FAST Kit Xylophilus ampelinus	Size	
	For rapid detection of Xyl. ampelinus in bacterial cultures only!		
LF07138/05	LOEWE®FAST Kit Xylophilus ampelinus	5 tests	
LF07138/20	LOEWE®FAST Kit Xylophilus ampelinus	20 tests	
LF07138/50	LOEWE®FAST Kit Xylophilus ampelinus	50 tests	
LF07810	Lateral Flow Supplements	Size	
LF07810/05	Micro-pestle for leaf tissue homogenization	5 pieces	
LF07810/20	Micro-pestle for leaf tissue homogenization	20 pieces	
LF07810/50	Micro-pestle for leaf tissue homogenization	50 pieces	
LF700BU/001	Sample Buffer for preparation of mixed samples (powder)	1 liter	

ELISA (Enzyme-linked Immunosorbent Assay) is still the most common test method for the detection of plant pathogens, like viruses and bacteria. LOEWE® offers a range of 150 high quality ELISA products for specific and sensitive detection of plant pathogens.

ELISA Sets:

Coating-IgG and AP-Conjugate

Sets are supplied as 100, 300, 500, and for many pathogens as 1000 and 5000 test formats. One test corresponds to one well in the ELISA plate. Reagents are optimized and evaluated for a test volume of 200 µl.

ELISA Complete Kits:

IgG, AP-Conjugate, buffers, controls, plates

Complete kits are available for 96, 480, and for many pathogens as 960 and now as **4800 test kits** for some pathogens.

Components	96 test kits	480 test kits	960 test kits	4800 test kit
Antibody (IgG)	0.1 ml	0.5 ml	1.0 ml	5 x 1.0 ml
Antibody-AP-conjugate	0.1 ml	0.5 ml	1.0 ml	5 x 1.0 ml
Positive Control	10 tests	10 tests	20 tests	5x 20 tests
Negative Control	10 tests	10 tests	20 tests	5 x 20 tests
Coating Buffer	1 liter	1 liter	1 liter	1 liter
Wash Buffer	1 x 5 liter	1 x 5 liter	2 x 5 liter	5 x 5 liter
Conjugate/Sample Buffer	1 x 1 liter	2 x 1 liter	4 x 1 liter	10 x 1 liter
Substrate Buffer (5x)	1 x 25 ml	1 x 25 ml	2 x 25 ml	200 ml
Substrate Tablets	4 x 5 mg	5 x 20 mg	10 x 20 mg	5 g (as powder)
Tween 20	10 ml	10 ml	10 ml	50 ml
High-binding ELISA plates	12 Modules à 8 wells	5 plates	10 plates	50 plates
Sealing Cover	1 sheet	5 sheets	10 sheets	50 sheets

ELISA Controls:

Positive controls are prepared from infected plant material or bacterial cultures.

Restricted Pathogens: in case of quarantine pests, inactivated positive controls are supplied, which are additionally tested for the absence of infectivity.

Non-pathogenic 'method' controls can be used to ensure that the ELISA has been carried out correctly. They are supplied as economic alternative for inactivated positive controls. For pathogens with export restrictions solely method controls can be supplied.

Negative controls are made from a healthy host plant and are tested for the absence of the respective pathogen.

Product Section

ELISA Products - Viruses			
	African Cassava Mosaic Virus (ACMV) see Tomato Yellow Leafcurl Virus		
	which exhibits a strong cross reaction with ACMV isolates		
07001	Alfalfa Mosaic Alfamovirus. AMV	Size	
	(Lucerne Mosaic Virus, Potato Calico Virus) Host range: many species	DAS ELISA	
	Transmission by aphids, grafting, mechanical inoculation, seeds.		
07001S/100	Alfalfa Mosaic Virus set / 100	100 tests	
07001S/300	Alfalfa Mosaic Virus set / 300	300 tests	
07001S/500	Alfalfa Mosaic Virus set / 500	500 tests	
07001S/1000	Alfalfa Mosaic Virus set / 1000	1000 tests	
07001S/5000	Alfalfa Mosaic Virus set / 5000	5000 tests	
07001C/096	Alfalfa Mosaic Virus complete kit / 96	96 tests	
07001C/480	Alfalfa Mosaic Virus complete kit / 480	480 tests	
07001C/960	Alfalfa Mosaic Virus complete kit / 960	960 tests	
07001C/4800	Alfalfa Mosaic Virus complete kit / 4800	4800 tests	
07001PC	Positive Control Alfalfa Mosaic Virus	1 vial (10 tests)	
07001NC	Negative Control Alfalfa Mosaic Virus	1 vial (10 tests)	
07164	Andean Potato Latent Tymovirus. APLV	Size	
	(Potato Andean Latent Virus). Host range: potato	DAS ELISA	
	Transmitted by contact, grafting, mechanical inoculation, seed, vector.		
07164S/100	Andean Potato Latent Virus set / 100	100 tests	
07164S/300	Andean Potato Latent Virus set / 300	300 tests	
07164S/500	Andean Potato Latent Virus set / 500	500 tests	
07164C/096	Andean Potato Latent Virus complete kit / 96	96 tests	
07164C/480	Andean Potato Latent Virus complete kit / 480	480 tests	
07164C/960	Andean Potato Latent Virus complete kit / 960	960 tests	
07210PC	ELISA Method Control GAR unpecific	1 vial (10 tests)	
07164NC	Negative Control Andean Potato Latent Virus	1 vial (10 tests)	
07160	Andean Potato Mottle Comovirus. APMoV	Size	
	(Potato Andean Mottle Virus) Host range: potato	DAS ELISA	
	Transmission by contact between plants, grafting.		
07160S/100	Andean Potato Mottle Virus set / 100	100 tests	
07160S/300	Andean Potato Mottle Virus set / 300	300 tests	
07160S/500	Andean Potato Mottle Virus set / 500	500 tests	
07160C/096	Andean Potato Mottle Virus complete kit / 96	96 tests	
07160C/480	Andean Potato Mottle Virus complete kit / 480	480 tests	
07160C/960	Andean Potato Mottle Virus complete kit / 960	960 tests	
07210PC	ELISA Method Control GAR unpecific	1 vial (10 tests)	
07160NC	Negative Control Andean Potato Mottle Virus	1 vial (10 tests)	

Product Section

07003	Apple Chlorotic Leafspot Trichovirus. ACLSV	Size	
	(Apple Latent Virus 1, Plum Pseudopox Virus, Quince Stunt Virus)	Cocktail ELISA	
	Host range: Rosaceae. Transmission: grafting, mech. inoculation, nematodes		
07003S/100	Apple Chlorotic Leafspot Virus set / 100	100 tests	
07003S/300	Apple Chlorotic Leafspot Virus set / 300	300 tests	
07003S/500	Apple Chlorotic Leafspot Virus set / 500	500 tests	
07003C/96	Apple Chlorotic Leafspot Virus complete kit / 96	96 tests	
07003C/480	Apple Chlorotic Leafspot Virus complete kit / 480	480 tests	
07003PC	Positive Control Apple Chlorotic Leafspot Virus	1 vial (10 tests)	
07003NC	Negative Control Apple Chlorotic Leafspot Virus	1 vial (10 tests)	
07054	Apple Mosaic Ilarvirus. ApMV (hop isolate)	Size	
	(Birch Line Pattern Virus, Hop A Virus, Rose Mosaic Virus)	DAS ELISA	
	Host range: hop, Rosaceae, Transmission: grafting, mechanically, pollen?		
07054S/100	Apple Mosaic Virus set / 100	100 tests	
07054S/300	Apple Mosaic Virus set / 300	300 tests	
07054S/500	Apple Mosaic Virus set / 500	500 tests	
07054S/1000	Apple Mosaic Virus set / 1000	1000 tests	
07054C/96	Apple Mosaic Virus complete kit / 96	96 tests	
07054C/480	Apple Mosaic Virus complete kit / 480	480 tests	
07054C/960	Apple Mosaic Virus complete kit / 960	960 tests	
07054PC	Positive Control Apple Mosaic Virus	1 vial (10 tests)	
07054NC	Negative Control Apple Mosaic Virus	1 vial (10 tests)	
07085	Apple Stem Grooving Capillovirus. ASGV	Size	
	(Brown Line Disease V., Citrus Tatterleaf V., Virginia Crab Stem Grooving).	Cocktail ELISA	
	Host range: apple, citrus. Transmission by mech. inocul., seed.		
07085S/100	Apple Stem Grooving Virus set / 100	100 tests	
07085S/300	Apple Stem Grooving Virus set / 300	300 tests	
07085S/500	Apple Stem Grooving Virus set / 500	500 tests	
07085C/96	Apple Stem Grooving Virus complete kit / 96	96 tests	
07085C/480	Apple Stem Grooving Virus complete kit / 480	480 tests	
07085PC	Positive Control Apple Stem Grooving Virus	1 vial (10 tests)	
07085NC	Negative Control Apple Stem Grooving Virus	1 vial (10 tests)	
07053	Arabis Mosaic Nepovirus. ArMV	Size	
	(Syn.: Ash Ring and Line Pattern Virus, Forsythia Yellow Net Virus,	DAS ELISA	
	Rhabarber Mosaic Virus, Raspberry Yellow Dwarf Virus)		
	Host range: many species		
	Transmission by grafting, mechanical inoculation, nematodes, seed.		
07053S/100	Arabis Mosaic Virus set / 100	100 tests	
07053S/300	Arabis Mosaic Virus set / 300	300 tests	
07053S/500	Arabis Mosaic Virus set / 500	500 tests	
07053S/1000	Arabis Mosaic Virus set / 1000	1000 tests	
07053C/96	Arabis Mosaic Virus complete kit / 96	96 tests	
07053C/480	Arabis Mosaic Virus complete kit / 480	480 tests	
07053C/960	Arabis Mosaic Virus complete kit / 960	960 tests	
07053PC	Positive Control Arabis Mosaic Virus inactivated	1 vial (10 tests)	
07210PC	ELISA Method Control GAR unspecific	1 vial (10 tests)	
07053NC	Negative Control Arabis Mosaic Virus	1 vial (10 tests)	

Product Section

07006	Barley Mild Mosaic Bymovirus. BaMMV	Size	
	Host range: barley.	DAS ELISA	
	Transmission by mechanical inoculation, Polymyxa graminis.		
07006S/100	Barley Mild Mosaic Virus set / 100	100 tests	
07006S/300	Barley Mild Mosaic Virus set / 300	300 tests	
07006S/500	Barley Mild Mosaic Virus set / 500	500 tests	
07006C/096	Barley Mild Mosaic Virus complete kit / 96	96 tests	
07006C/480	Barley Mild Mosaic Virus complete kit / 480	480 tests	
07006PC	Positive Control Barley Mild Mosaic Virus	1 vial (10 tests)	
07006NC	Negative Control Barley Mild Mosaic Virus	1 vial (10 tests)	
07004	Barley Stripe Mosaic Hordeivirus. BSMV	Size	
	(Syn.: Barley False Stripe Mosaic Virus, Barley Yellow Stripe Virus, Oat Stripe Mosaic Virus)	DAS ELISA	
	Host range: barley, maize, oat, wheat etc.		
	Transmission by mechanical inoculation, pollen, seed.		
07004S/100	Barley Stripe Mosaic Virus set / 100	100 tests	
07004S/300	Barley Stripe Mosaic Virus set / 300	300 tests	
07004S/500	Barley Stripe Mosaic Virus set / 500	500 tests	
07004C/096	Barley Stripe Mosaic Virus complete kit / 96	96 tests	
07004C/480	Barley Stripe Mosaic Virus complete kit / 480	480 tests	
07004PC	Positive Control Barley Stripe Mosaic Virus	1 vial (10 tests)	
07004NC	Negative Control Barley Stripe Mosaic Virus	1 vial (10 tests)	
07005	Barley Yellow Dwarf Luteovirus (PAV, MAV). BaYDV	Size	
	(Syn.: Cereal Yellow Dwarf Virus, Oat Red Leaf Virus, Rice Giallume Virus, Ryegrass Chlorotic Streak Virus).	DAS ELISA	
	Host range: barley, rice, rye. Transmitted by aphids.		
07005S/100	Barley Yellow Dwarf Virus set / 100	100 tests	
07005S/300	Barley Yellow Dwarf Virus set / 300	300 tests	
07005S/500	Barley Yellow Dwarf Virus set / 500	500 tests	
07005C/096	Barley Yellow Dwarf Virus complete kit / 96	96 tests	
07005C/480	Barley Yellow Dwarf Virus complete kit / 480	480 tests	
07005PC	Positive Control Barley Yellow Dwarf Virus	1 vial (10 tests)	
07005NC	Negative Control Barley Yellow Dwarf Virus	1 vial (10 tests)	
07076	Barley Yellow Mosaic Bymovirus BaYMV	Size	
	Host range: barley.	DAS ELISA	
	Transmission: mechanical inoculation, Polymyxa graminis.		
07076S/100	Barley Yellow Mosaic Virus set / 100	100 tests	
07076S/300	Barley Yellow Mosaic Virus set / 300	300 tests	
07076S/500	Barley Yellow Mosaic Virus set / 500	500 tests	
07076C/096	Barley Yellow Mosaic Virus complete kit / 96	96 tests	
07076C/480	Barley Yellow Mosaic Virus complete kit / 480	480 tests	
07076PC	Positive Control Barley Yellow Mosaic Virus	1 vial (10 tests)	
07076NC	Negative Control Barley Yellow Mosaic Virus	1 vial (10 tests)	

Product Section

07172	Bean Common Mosaic Potyvirus. Serotype B. BCMV	Size	
	(Syn.: Bean Common Mosaic Virus Serotype B, Bean Mosaic Virus, Bean Western Mosaic Virus, Mungbean Mosaic Virus) Host range: bean species.	DAS ELISA	
	Transmission by aphids, mechanical inoculation, seed.		
07172S/100	Bean Common Mosaic Virus set / 100	100 tests	
07172S/300	Bean Common Mosaic Virus set / 300	300 tests	
07172S/500	Bean Common Mosaic Virus set / 500	500 tests	
07172C/096	Bean Common Mosaic Virus complete kit / 96	96 tests	
07172C/480	Bean Common Mosaic Virus complete kit / 480	480 tests	
07172PC	Positive Control Bean Common Mosaic Virus	1 vial (10 tests)	
07172NC	Negative Control Bean Common Mosaic Virus	1 vial (10 tests)	
07114	Bean Common Mosaic Necrosis Potyvirus Serotype A. BCMNV	Size	
	Host range: bean species. Transmission: aphids, mechan. inocul., seed.	DAS ELISA	
07114S/100	Bean Common Mosaic Necrosis Virus set / 100	100 tests	
07114S/300	Bean Common Mosaic Necrosis Virus set / 300	300 tests	
07114S/500	Bean Common Mosaic Necrosis Virus set / 500	500 tests	
07114C/096	Bean Common Mosaic Necrosis Virus complete kit / 96	96 tests	
07114C/480	Bean Common Mosaic Necrosis Virus complete kit / 480	480 tests	
07114PC	Positive Control Bean Common Mosaic Necrosis Virus	1 vial (10 tests)	
07114NC	Negative Control Bean Common Mosaic Necrosis Virus	1 vial (10 tests)	
07007	Bean Yellow Mosaic Potyvirus. BYMV	Size	
	(Syn.: Bean Virus 2, Canna Mosaic Virus, Croatian Clover Mosaic Virus)	DAS ELISA	
	Host range: Iridaceae, Leguminosae etc.		
	Transmission: aphids, mechanical inoculation, seed.		
07007S/100	Bean Yellow Mosaic Virus set / 100	100 tests	
07007S/300	Bean Yellow Mosaic Virus set / 300	300 tests	
07007S/500	Bean Yellow Mosaic Virus set / 500	500 tests	
07007S/1000	Bean Yellow Mosaic Virus set / 1000	1000 tests	
07007C/096	Bean Yellow Mosaic Virus complete kit / 96	96 tests	
07007C/480	Bean Yellow Mosaic Virus complete kit / 480	480 tests	
07007/960	Bean Yellow Mosaic Virus complete kit / 960	960 tests	
07007PC	Positive Control Bean Yellow Mosaic Virus	1 vial (10 tests)	
07007NC	Negative Control Bean Yellow Mosaic Virus	1 vial (10 tests)	
07250	Beet Black Scorch Tombusvirus. BBSV		
	Host range: sugar beet		
	Transmission: putative by Olpidium brassicae zoospores		
07250S/100	Beet Black Scorch Virus set / 100	100 tests	
07250S/300	Beet Black Scorch Virus set / 300	300 tests	
07250S/500	Beet Black Scorch Virus set / 500	500 tests	
07250C/096	Beet Black Scorch Virus complete kit / 96	96 tests	
07250C/480	Beet Black Scorch Virus complete kit / 480	480 tests	
07250PC	Positive Control Beet Black Scorch Virus	1 vial (10 tests)	
07250NC	Negative Control Beet Black Scorch Virus	1 vial (10 tests)	

Product Section

07010	Beet Mosaic Potyvirus. BtMV	Size	
	(Syn.: Spinach Mosaic Virus, Sugar Beet Mosaic Virus)	DAS ELISA	
	Host range: Chenopodiaceae. Transmission by aphids.		
07010S/100	Beet Mosaic Virus set / 100	100 tests	
07010S/300	Beet Mosaic Virus set / 300	300 tests	
07010S/500	Beet Mosaic Virus set / 500	500 tests	
07010S/1000	Beet Mosaic Virus set / 1000	1000 tests	
07010C/96	Beet Mosaic Virus complete kit / 96	96 tests	
07010C/480	Beet Mosaic Virus complete kit / 480	480 tests	
07010C/960	Beet Mosaic Virus complete kit / 960	960 tests	
07010PC	Positive Control Beet Mosaic Virus	1 vial (10 tests)	
07010NC	Negative Control Beet Mosaic Virus	1 vial (10 tests)	
07011	Beet Necrotic Yellow Vein Benyvirus. BNYVV	Size	
	(Syn.: Rizomania, Rübenwurzelbärtigkeitsvirus) Host range: Chenopodiaceae.	DAS ELISA	
	Transmission: mechanical inoculation, Polymyxa betae.		
07011S/100	Beet Necrotic Yellow Vein Virus set / 100	100 tests	
07011S/300	Beet Necrotic Yellow Vein Virus set / 300	300 tests	
07011S/500	Beet Necrotic Yellow Vein Virus set / 500	500 tests	
07011C/96	Beet Necrotic Yellow Vein Virus complete kit / 96	96 tests	
07011C/480	Beet Necrotic Yellow Vein Virus complete kit / 480	480 tests	
07011PC	Positive Control Beet Necrotic Yellow Vein Virus	1 vial (10 tests)	
07011NC	Negative Control Beet Necrotic Yellow Vein Virus	1 vial (10 tests)	
07012	Beet Yellowings Closterovirus. BYV	Size	
	(Syn.: Sugar Beet Yellowings Virus). Host range Chenopodiaceae.	DAS ELISA	
	Transmission by aphids		
07012S/100	Beet Yellowings Virus set / 100	100 tests	
07012S/300	Beet Yellowings Virus set / 300	300 tests	
07012S/500	Beet Yellowings Virus set / 500	500 tests	
07012C/96	Beet Yellowings Virus complete kit / 96	96 tests	
07012C/480	Beet Yellowings Virus complete kit / 480	480 tests	
07012PC	Positive Control Beet Yellowings Virus	1 vial (10 tests)	
07012NC	Negative Control Beet Yellowings Virus	1 vial (10 tests)	
07015	Broad Bean Wilt Fabavirus. BBWV I	Size	
	(Syn.: Nasturtium Ringspot Virus, Petunia Ringspot Virus, Pea Streak Virus, Ringmosaikvirus der Kapuzinerkresse). Host range many species.	DAS ELISA	
	Transmission by aphids, mechanical inoculation.		
07015S/100	Broad Bean Wilt Virus I set / 100	100 tests	
07015S/300	Broad Bean Wilt Virus I set / 300	300 tests	
07015S/500	Broad Bean Wilt Virus I set / 500	500 tests	
07015S/1000	Broad Bean Wilt Virus I set / 1000	1000 tests	
07015C/96	Broad Bean Wilt Virus I complete kit / 96	96 tests	
07015C/480	Broad Bean Wilt Virus I complete kit / 480	480 tests	
07015C/960	Broad Bean Wilt Virus I complete kit / 960	960 tests	
07015PC	Positive Control Broad Bean Wilt Virus I	1 vial (10 tests)	
07015NC	Negative Control Broad Bean Wilt Virus I	1 vial (10 tests)	

Product Section

07017	Broad Bean Wilt Fabavirus II. BBWV II	Size	
	(Syn.: Plantago II virus, Patchouli Mild Mosaic Virus). Host range many species.	DAS ELISA	
	Transmission by aphids, mechanical inoculation.		
07017S/100	Broad Bean Wilt Virus II set / 100	100 tests	
07017S/300	Broad Bean Wilt Virus II set / 300	300 tests	
07017S/500	Broad Bean Wilt Virus II set / 500	500 tests	
07017S/1000	Broad Bean Wilt Virus II set / 1000	1000 tests	
07017C/096	Broad Bean Wilt Virus II complete kit / 96	96 tests	
07017C/480	Broad Bean Wilt Virus II complete kit / 480	480 tests	
07017C/960	Broad Bean Wilt Virus II complete kit / 960	960 tests	
07017PC	Positive Control Broad Bean Wilt Virus II	1 vial (10 tests)	
07017NC	Negative Control Broad Bean Wilt Virus II	1 vial (10 tests)	
07016	Brome Mosaic Bromovirus. BMV	Size	
	(Syn.: Rye Grass Streak Virus, Trespenmosaik Virus, Weidelgrasmosaik Virus).	DAS ELISA	
	Host range barley, maize, rye. Transmission by nematode (Xiphinema).		
07016S/100	Brome Mosaic Virus set / 100	100 tests	
07016S/300	Brome Mosaic Virus set/ 300	300 tests	
07016S/500	Brome Mosaic Virus set / 500	500 tests	
07016S/1000	Brome Mosaic Virus set / 1000	1000 tests	
07016C/096	Brome Mosaic Virus complete kit / 96	96 tests	
07016C/480	Brome Mosaic Virus complete kit / 480	480 tests	
07016C/960	Brome Mosaic Virus complete kit / 960	960 tests	
07016PC	Positive Control Brome Mosaic Virus	1 vial (10 tests)	
07016NC	Negative Control Brome Mosaic Virus	1 vial (10 tests)	
07123	Brome Streak Mosaic Tritimovirus. BSTV	Size	
	Host range: Gramineae. Transmission by erythrophoid mites.	DAS ELISA	
07123S/100	Brome Streak Mosaic Virus set / 100	100 tests	
07123S/300	Brome Streak Mosaic Virus set / 300	300 tests	
07123S/500	Brome Streak Mosaic Virus set / 500	500 tests	
07123C/096	Brome Streak Mosaic Virus complete kit / 96	96 tests	
07123C/480	Brome Streak Mosaic Virus complete kit / 480	480 tests	
07123PC	Positive Control Brome Streak Mosaic Virus	1 vial (10 tests)	
07123NC	Negative Control Brome Streak Mosaic Virus	1 vial (10 tests)	
07008	Calibrachoa Mottle Carmovirus. CbMV	Size	
	Host range: Petunia, Calibrachoa. Transmission: mechanical inoculation.	DAS ELISA	
07008S/100	Calibrachoa Mottle Virus set / 100	100 tests	
07008S/300	Calibrachoa Mottle Virus set / 300	300 tests	
07008S/500	Calibrachoa Mottle Virus set / 500	500 tests	
07008C/096	Calibrachoa Mottle Virus complete kit / 96	96 tests	
07008C/480	Calibrachoa Mottle Virus complete kit / 480	480 tests	
07008PC	Positive Control Calibrachoa Mottle Virus	1 vial (10 tests)	
07008NC	Negative Control Calibrachoa Mottle Virus	1 vial (10 tests)	
07086	Cauliflower Mosaic Virus: please inquire		

Product Section

07078	Carnation Latent Carla Virus. CLV	Size	
	(Syn.: Dulcamara A Virus, Dulcamara B Virus).	DAS ELISA	
	Host range: carnation spp.		
	Transmission by aphids, mechanical inoculation.		
07078S/100	Carnation Latent Virus set / 100	100 tests	
07078S/300	Carnation Latent Virus set / 300	300 tests	
07078S/500	Carnation Latent Virus set / 500	500 tests	
07078C/096	Carnation Latent Virus complete kit / 96	96 tests	
07078C/480	Carnation Latent Virus complete kit / 480	480 tests	
07078PC	Positive Control Carnation Latent Virus	1 vial (10 tests)	
07078NC	Negative Control Carnation Latent Virus	1 vial (10 tests)	
07057	Carnation Mottle Carmovirus. CarMV	Size	
	Host range: Begonia, Dianthus spp.	DAS ELISA	
	Tranmission by contacts between plants, grafting, mechanical inoculation.		
07057S/100	Carnation Mottle Virus set / 100	100 tests	
07057S/300	Carnation Mottle Virus set / 300	300 tests	
07057S/500	Carnation Mottle Virus set / 500	500 tests	
07057C/096	Carnation Mottle Virus complete kit / 96	96 tests	
07057C/480	Carnation Mottle Virus complete kit / 480	480 tests	
07057PC	Positive Control Carnation Mottle Virus	1 vial (10 tests)	
07057NC	Negative Control Carnation Mottle Virus	1 vial (10 tests)	
07019	Carnation Ringspot Dianthovirus. CRSV	Size	
	Host range: carnation spp..	DAS ELISA	
	Transmission by contact between plants, grafting, mechanical inoculation, nematodes.		
07019S/100	Carnation Ringspot Virus set / 100	100 tests	
07019S/300	Carnation Ringspot Virus set / 300	300 tests	
07019S/500	Carnation Ringspot Virus set / 500	500 tests	
07019C/096	Carnation Ringspot Virus complete kit / 96	96 tests	
07019C/480	Carnation Ringspot Virus complete kit / 480	480 tests	
07019PC	Positive Control Carnation Ringspot Virus	1 vial (10 tests)	
07019NC	Negative Control Carnation Ringspot Virus	1 vial (10 tests)	
07020	Carnation Vein Mottle Potyvirus. CVMV	Size	
	Host range: carnation spp..	DAS ELISA	
	Transmission: aphids, mechanical inoculation.		
07020S/100	Carnation Vein Mottle Virus set / 100	100 tests	
07020S/300	Carnation Vein Mottle Virus set / 300	300 tests	
07020S/500	Carnation Vein Mottle Virus set / 500	500 tests	
07020C/096	Carnation Vein Mottle Virus complete kit / 96	96 tests	
07020C/480	Carnation Vein Mottle Virus complete kit / 480	480 tests	
07020PC	Positive Control Carnation Vein Mottle Virus	1 vial (10 tests)	
07020NC	Negative Control Carnation Vein Mottle Virus	1 vial (10 tests)	

Product Section

07072	Celery Mosaic Potyvirus. CeMV	Size	
	(Syn.: Apium Virus 1, Western Celery Mosaic V., Celery Crinkleleaf V., Celery Ringspot V., Poison Hemlock Ringspot V.) Host range: carrot, celery, coriander, parsley, parsnip. Transmission by aphids, mechanical inoculation.	DAS ELISA	
07072S/100	Celery Mosaic Virus set / 100	100 tests	
07072S/300	Celery Mosaic Virus set / 300	300 tests	
07072S/500	Celery Mosaic Virus set / 500	500 tests	
07072C/096	Celery Mosaic Virus complete kit / 96	96 tests	
07072C/480	Celery Mosaic Virus complete kit / 480	480 tests	
07072PC	Positive Control Celery Mosaic Virus	1 vial (10 tests)	
07072NC	Negative Control Celery Mosaic Virus	1 vial (10 tests)	
07093	Cherry Leafroll Nepovirus b (birch isolate). CLRV b	Size	
	(Syn.: Ash Mosaic Virus, Elm Mosaic Virus, Golden Elderberry Virus, Sambucus Ringspot Virus). Host range many deciduous trees. Transmission by mechanical inoculation, nematodes.	DAS ELISA	
07093S/100	Cherry Leafroll Virus b set / 100	100 tests	
07093S/300	Cherry Leafroll Virus b set / 300	300 tests	
07093S/500	Cherry Leafroll Virus b set / 500	500 tests	
07093S/1000	Cherry Leafroll Virus b set / 1000	1000 tests	
07093C/096	Cherry Leafroll Virus b complete kit / 96	96 tests	
07093C/480	Cherry Leafroll Virus b complete kit / 480	480 tests	
07093C/960	Cherry Leafroll Virus b complete kit / 960	960 tests	
07093PC	Positive Control Cherry Leafroll Virus b inactivated	1 vial (10 tests)	
07210PC	ELISA Method Control GAR unspecific	1 vial (10 tests)	
07093NC	Negative Control Cherry Leafroll Virus b	1 vial (10 tests)	
	Chilli Mottle Potyvirus see Pepper Mottle Potyvirus		
07185	Chilli Veinal Mottle Potyvirus. ChiVMV	Size	
	Host range Capsicum species. Transmission by aphids, mech. inoculation.	DAS ELISA	
07185S/100	Chilli Veinal Mottle Virus set / 100	100 tests	
07185S/300	Chilli Veinal Mottle Virus set / 300	300 tests	
07185S/500	Chilli Veinal Mottle Virus set / 500	500 tests	
07185C/096	Chilli Veinal Mottle Virus complete kit / 96	96 tests	
07185C/480	Chilli Veinal Mottle Virus complete kit / 480	480 tests	
07185PC	Positive Control Chilli Veinal Mottle Virus	1 vial (10 tests)	
07185NC	Negative Control Chilli Veinal Mottle Virus	1 vial (10 tests)	
07021	Chrysanthemum Carlavirus B. CVB	Size	
	(Syn.: Chrysanthemum Virus Q, Chrysanthemum Dwarf Mottle Virus, Chrysanthemum Necrotic Mottle Virus. Host range: Chrysanthemum spp. Transmission by aphids, grafting, mechanical inoculation.	DAS ELISA	
07021S/100	Chrysanthemum Virus B set / 100	100 tests	
07021S/300	Chrysanthemum Virus B set / 300	300 tests	
07021S/500	Chrysanthemum Virus B set / 500	500 tests	
07021C/096	Chrysanthemum Virus B complete kit / 96	96 tests	
07021C/480	Chrysanthemum Virus B complete kit / 480	480 tests	
07021PC	Positive Control Chrysanthemum Virus B	1 vial (10 tests)	
07021NC	Negative Control Chrysanthemum Virus B	1 vial (10 tests)	

Product Section

07099	Citrus Tristeza Closterovirus. CTV	Size	
	(Syn.: Citrus Quick Decline Virus, Hassaku Dwarf Lime Dieback Virus).	DAS ELISA	
	Host range: citrus spp.		
	Transmission by aphids, grafting.		
07099S/100	Citrus Tristeza Virus set / 100	100 tests	
07099S/300	Citrus Tristeza Virus set / 300	300 tests	
07099S/500	Citrus Tristeza Virus set / 500	500 tests	
07099S/1000	Citrus Tristeza Virus set / 1000	1000 tests	
07099S/5000	Citrus Tristeza Virus set / 5000	5000 tests	
07099C/096	Citrus Tristeza Virus complete kit / 96	96 tests	
07099C/480	Citrus Tristeza Virus complete kit / 480	480 tests	
07099C/960	Citrus Tristeza Virus complete kit / 960	960 tests	
07099C/4800	Citrus Tristeza Virus complete kit / 4800	4800 tests	
07099PC	Positive Control Citrus Tristeza Virus inactivated	1 vial (10 tests)	
07210PC	ELISA Method Control GAR unspecific	1 vial (10 tests)	
07099NC	Negative Control Citrus Tristeza Virus	1 vial (10 tests)	
07166	Cowpea Mild Mottle Carlavirus. CPMMV	Size	
	(Syn.: Bean Angular Mosaic Virus, Voandezia Mosaic Virus, Groundnut Crinkle Virus).	DAS ELISA	
	Host range: Leguminosae.		
	Transmission by Bemisia tabacci, mechanical inoculation, seed.		
07166S/100	Cowpea Mild Mottle Virus set / 100	100 tests	
07166S/300	Cowpea Mild Mottle Virus set / 300	300 tests	
07166S/500	Cowpea Mild Mottle Virus set / 500	500 tests	
07166C/096	Cowpea Mild Mottle Virus complete kit / 96	96 tests	
07166C/480	Cowpea Mild Mottle Virus complete kit / 480	480 tests	
07210PC	ELISA Method Control GAR unspecific	1 vial (10 tests)	
07166NC	Negative Control Cowpea Mild Mottle Virus	1 vial (10 tests)	
07022	Cucumber Green Mottle Mosaic Tobamovirus. CGMMV	Size	
	(Syn.: Tobacco Mosaic Virus watermelon strain, Cucumber Virus 3)	DAS ELISA	
	Host range. Cucurbitaceae.		
	Transmission: mechanical inoculation, vector unknown, infection via roots		
07022S/100	Cucumber Green Mottle Mosaic Virus set / 100	100 tests	
07022S/300	Cucumber Green Mottle Mosaic Virus set / 300	300 tests	
07022S/500	Cucumber Green Mottle Mosaic Virus set / 500	500 tests	
07022S/1000	Cucumber Green Mottle Mosaic Virus set / 1000	1000 tests	
07022C/5000	Cucumber Green Mottle Mosaic Virus set / 5000	5000 tests	
07022C/096	Cucumber Green Mottle Mosaic Virus complete kit / 96	96 tests	
07022C/480	Cucumber Green Mottle Mosaic Virus complete kit / 480	480 tests	
07022C/960	Cucumber Green Mottle Mosaic Virus complete kit / 960	960 tests	
07022C/4800	Cucumber Green Mottle Mosaic Virus complete kit / 4800	4800 tests	
07022PC	Positive Control Cucumber Green Mottle Mosaic Virus	1 vial (10 tests)	
07022NC	Negative Control Cucumber Green Mottle Mosaic Virus	1 vial (10 tests)	

Product Section

07014	Cucumber Mosaic Cucumovirus DTL	Size	
	Strong reaction with ToRS. Host range. Many species	DAS ELISA	
	Transmission by aphids, mechanical inoculation, seed.		
07014S/100	Cucumber Mosaic Virus DTL set/ 100	100 tests	
07014S/300	Cucumber Mosaic Virus DTL set/ 300	300 tests	
07014S/500	Cucumber Mosaic Virus DTL set/ 500	500 tests	
07014C/096	Cucumber Mosaic Virus DTL complete kit / 96	96 tests	
07014C/480	Cucumber Mosaic Virus DTL complete kit / 480	480 tests	
07014PC	Positive Control Cucumber Mosaic Virus	1 vial (10 tests)	
07014NC	Negative Control Cucumber Mosaic Virus	1 vial (10 tests)	
07023	Cucumber Mosaic Cucumovirus ToRS	Size	
	Strong reaction with DTL. Host range. Many species	DAS ELISA	
	Transmission by aphids, mechanical inoculation, seed.		
07023S/100	Cucumber Mosaic Virus ToRS set/ 100	100 tests	
07023S/300	Cucumber Mosaic Virus ToRS set/ 300	300 tests	
07023S/500	Cucumber Mosaic Virus ToRS set/ 500	500 tests	
07023C/096	Cucumber Mosaic Virus ToRS complete kit / 96	96 tests	
07023C/480	Cucumber Mosaic Virus ToRS complete kit / 480	480 tests	
07023PC	Positive Control Cucumber Mosaic Virus	1 vial (10 tests)	
07014NC	Negative Control Cucumber Mosaic Virus	1 vial (10 tests)	
07108	Cucumber Mosaic Cucumovirus DTL/ToRS. CMV DTL/ToRS	Size	
	Artificial mixture DTL/ToRS. Host range: many species.	DAS ELISA	
	Transmission by aphids, seed.		
07108S/100	Cucumber Mosaic Virus DTL/ToRS / 100	100 tests	
07108S/300	Cucumber Mosaic Virus DTL/ToRS / 300	300 tests	
07108S/500	Cucumber Mosaic Virus DTL/ToRS / 500	500 tests	
07108S/1000	Cucumber Mosaic Virus DTL/ToRS / 1000	1000 tests	
07108S/5000	Cucumber Mosaic Virus DTL/ToRS / 5000	5000 tests	
07108C/096	Cucumber Mosaic Virus DTL/ToRS complete kit / 96	96 tests	
07108C/480	Cucumber Mosaic Virus DTL/ToRS complete kit / 480	480 tests	
07108C/960	Cucumber Mosaic Virus DTL/ToRS complete kit / 960	960 tests	
07108C/4800	Cucumber Mosaic Virus DTL/ToRS complete kit / 4800	4800 tests	
07108PC	Positive Control Cucumber Mosaic Virus	1 vial (10 tests)	
07108NC	Negative Control Cucumber Mosaic Virus	1 vial (10 tests)	
07075	Cucurbit Chlorotic Yellows Crinivirus. CCYV	Size	
	Host range: Cucurbitaceae.	DAS ELISA	
	Transmission by Bemisia tabacchi.		
07075S/100	Cucurbit Chlorotic Yellows Virus set / 100	100 tests	
07075S/300	Cucurbit Chlorotic Yellows Virus set / 300	300 tests	
07075S/500	Cucurbit Chlorotic Yellows Virus set / 500	500 tests	
07075C/096	Cucurbit Chlorotic Yellows Virus complete kit / 96	96 tests	
07075C/ 480	Cucurbit Chlorotic Yellows Virus complete kit / 480	480 tests	
07075PC	Positive Control Cucurbit Chlorotic Yellows Virus	1 vial (10 tests)	
07075NC	Negative Control Cucurbit Chlorotic Yellows Virus	1 vial (10 tests)	

Product Section

07155	Cucurbit Yellow Stunting Disorder Crinivirus. CYSDV	Size	
	Host range: Cucurbitaceae. Transmission by Bemisia tabacchi.	DAS ELISA	
07155S/100	Cucurbit Yellow Stunting Disorder Virus set / 100	100 tests	
07155S/300	Cucurbit Yellow Stunting Disorder Virus set / 300	300 tests	
07155S/500	Cucurbit Yellow Stunting Disorder Virus set / 500	500 tests	
07155C/096	Cucurbit Yellow Stunting Disorder Virus complete kit / 96	96 tests	
07155C/480	Cucurbit Yellow Stunting Disorder Virus complete kit / 480	480 tests	
07155PC	Positive Control Cucurbit Yellow Stunting Disorder Virus	1 vial (10 tests)	
07155NC	Negative Control Cucurbit Yellow Stunting Disorder Virus	1 vial (10 tests)	
07018	Cymbidium Mosaic Potexvirus. CymMV	Size	
	(Orchid Mosaic Virus). Host range: orchids.	DAS ELISA	
	Transmission by contacts between plants, mechanical inoculation.		
07018S/100	Cymbidium Mosaic Virus set / 100	100 tests	
07018S/300	Cymbidium Mosaic Virus set / 300	300 tests	
07018S/500	Cymbidium Mosaic Virus set / 500	500 tests	
07018S/1000	Cymbidium Mosaic Virus set / 1000	1000 tests	
07018C/096	Cymbidium Mosaic Virus complete kit / 96	96 tests	
07018C/480	Cymbidium Mosaic Virus complete kit / 480	480 tests	
07018C/960	Cymbidium Mosaic Virus complete kit / 960	960 tests	
07018PC	Positive Control Cymbidium Mosaic Virus	1 vial (10 tests)	
07018NC	Negative Control Cymbidium Mosaic Virus	1 vial (10 tests)	
07024	Cymbidium Ringspot Tombusvirus. CymRSV	Size	
	Host range: Cymbidium spp., Trifolium repens.	DAS ELISA	
	Transmission by contact between plants, mechanical inoculation.		
07024S/100	Cymbidium Ringspot Virus set / 100	100 tests	
07024S/300	Cymbidium Ringspot Virus set / 300	300 tests	
07024S/500	Cymbidium Ringspot Virus set / 500	500 tests	
07024C/096	Cymbidium Ringspot Virus complete kit	96 tests	
07024C/480	Cymbidium Ringspot Virus complete kit	480 tests	
07024PC	Positive Control Cymbidium Ringspot Virus	1 vial (10 tests)	
07024NC	Negative Control Cymbidium Ringspot Virus	1 vial (10 tests)	
07169	Eggplant Mottled Dwarf Nucleorhabdovirus. EMDV	Size	
	(Syn.: Tomato Vein Chlorosis Virus, Tomato Yellow Vein Virus, Tomato Vein Clearing Virus).	DAS ELISA	
	Host range: Cucumber, Hibiscus, Petunia, Tobacco, Tomato.		
	Transmission by aphids, leafhoppers, mites, mechan. inoculation.		
07169S/100	Eggplant Mottled Dwarf Virus set / 100	100 tests	
07169S/300	Eggplant Mottled Dwarf Virus set / 300	300 tests	
07169S/500	Eggplant Mottled Dwarf Virus set /500	500 tests	
07169C/096	Eggplant Mottled Dwarf Virus complete kit / 96	96 tests	
07169C/480	Eggplant Mottled Dwarf Virus complete kit / 480	480 tests	
07169PC	Positive Control Eggplant Mottled Dwarf Virus	1 vial (10 tests)	
07169NC	Negative Control Eggplant Mottled Dwarf Virus	1 vial (10 tests)	

Product Section

07025	Freesia Mosaic Potyvirus. FreMV	Size	
	Host range: Freesia. Transmission by aphids, mechanical inoculation.	DAS ELISA	
07025S/100	Freesia Mosaic Virus set / 100	100 tests	
07025S/300	Freesia Mosaic Virus set / 300	300 tests	
07025S/500	Freesia Mosaic Virus set / 500	500 tests	
07025C/096	Freesia Mosaic Virus complete kit / 96	96 tests	
07025C/480	Freesia Mosaic Virus complete kit / 480	480 tests	
07025PC	Positive Control Freesia Mosaic Virus	1 vial (10 tests)	
07025NC	Negative Control Freesia Mosaic Virus	1 vial (10 tests)	
07092	Grapevine Algerian Latent Tombusvirus. GALV	Size	
	Host range: grapevine, static with severe symptoms, nipple fruit	DAS ELISA	
	Transmission: without vector, mechanical inoculation.		
07092S/100	Grapevine Algerian Latent Virus set 100	100 tests	
07092S/300	Grapevine Algerian Latent Virus set 300	300 tests	
07092S/500	Grapevine Algerian Latent Virus set 500	500 tests	
07092S/1000	Grapevine Algerian Latent Virus set / 1000	1000 tests	
07092C/096	Grapevine Algerian Latent Virus complete kit / 96	96 tests	
07092C/480	Grapevine Algerian Latent Virus complete kit / 480	480 tests	
07092C/960	Grapevine Algerian Latent Virus complete kit / 960	960 tests	
07092PC	Positive Control Grapevine Algerian Latent Virus	1 vial (10 tests)	
07092NC	Negative Control Grapevine Algerian Latent Virus	1 vial (10 tests)	
07191	Grapevine Leafroll associated Virus-1. GLRaV-1 Ampelovirus	Size	
	Host range: grapevine. Transmission by grafting and insect vectors.	DAS ELISA	
07191S/100	GLRaV-1 set 100	100 tests	
07191S/300	GLRaV-1 set 300	300 tests	
07191S/500	GLRaV- set 500	500 tests	
07191S/1000	GLRaV-1 set / 1000	1000 tests	
07191S/5000	GLRaV-1 set / 5000	5000 tests	
07191C/096	GLRaV-1 complete kit / 96	96 tests	
07191C/480	GLRaV-1 complete kit / 480	480 tests	
07191C/960	GLRaV-1 complete kit / 960	960 tests	
07191C/4800	GLRaV-1 complete kit / 4800	4800 tests	
07191PC	Positive Control GLRaV-1	1 vial (10 tests)	
07191.NC	Negative Control GLRaV-1	1 vial (10 tests)	
07190	Grapevine Leafroll associated Virus-3. GLRaV-3 Ampelovirus	Size	
	Host range: grapevine. Transmission by grafting and insect vectors.	DAS ELISA	
07190S/100	GLRaV-3 set 100	100 tests	
07190S/300	GLRaV-3 set 300	300 tests	
07190S/500	GLRaV-3 set 500	500 tests	
07190S/1000	GLRaV-3 set / 1000	1000 tests	
07190S/5000	GLRaV-3 set / 5000	5000 tests	
07190C/096	GLRaV-3 complete kit / 96	96 tests	
07190C/480	GLRaV-3 complete kit / 480	480 tests	
07190C/960	GLRaV-3 complete kit / 960	960 tests	
07190C/4800	GLRaV-3 complete kit / 4800	4800 tests	
07190PC	Positive Control GLRaV-3	1 vial (10 tests)	
07190NC	Negative Control GLRaV-3	1 vial (10 tests)	

Product Section

07197	Grapevine Leafroll associated Virus-7. GLRaV-7 tentative Velarivirus	Size	
	Host range: grapevine. Transmission by grafting and insect vectors.	DAS ELISA	
07197S/100	GLRaV-7 set 100	100 tests	
07197S/300	GLRaV-7 set 300	300 tests	
07197S/500	GLRaV-7 set 500	500 tests	
07197S/1000	GLRaV-7 set / 1000	1000 tests	
07197S/5000	GLRaV-7 set / 5000	5000 tests	
07197C/096	GLRaV-7 complete kit / 96	96 tests	
07197C/480	GLRaV-7 complete kit / 480	480 tests	
07197C/960	GLRaV-7 complete kit / 960	960 tests	
07197C/4800	GLRaV-7 complete kit / 4800	4800 tests	
07197PC	Positive Control GLRaV-7	1 vial (10 tests)	
07197NC	Negative Control GLRaV-7	1 vial (10 tests)	
07055	Grapevine Fanleaf Nepovirus. GFLV	Size	
	Host range: grapevine,	DAS ELISA	
	Transmission by mechanical inoculation, nematodes.		
07055S/100	Grapevine Fanleaf Virus set	100 tests	
07055S/300	Grapevine Fanleaf Virus set 300	300 tests	
07055S/500	Grapevine Fanleaf Virus set 500	500 tests	
07055S/1000	Grapevine Fanleaf Virus set / 1000	1000 tests	
07055C/096	Grapevine Fanleaf Virus complete kit / 96	96 tests	
07055C/480	Grapevine Fanleaf Virus complete kit / 480	480 tests	
07055C/960	Grapevine Fanleaf Virus complete kit / 960	960 tests	
07055PC	Positive Control Grapevine Fanleaf Virus inactivated	1 vial (10 tests)	
07210PC	ELISA Method Control GAR unspecific	1 vial (10 tests)	
07055NC	Negative Control Grapevine Fanleaf Virus	1 vial (10 tests)	
07105	Hop Mosaic Carlavirus. HpMV	Size	
	Host range: Hop, stinging nettle. Transmission aphids, mechan. inoculation	DAS ELISA	
07105S/100	Hop Mosaic Virus set / 100	100 tests	
07105S/300	Hop Mosaic Virus set / 300	300 tests	
07105S/500	Hop Mosaic Virus set / 500	500 tests	
07105S/1000	Hop Mosaic Virus set / 1000	1000 tests	
07105C/096	Hop Mosaic Virus complete kit / 96	96 tests	
07105C/480	Hop Mosaic Virus complete kit / 480	480 tests	
07105C/960	Hop Mosaic Virus complete kit / 960	960 tests	
07105PC	Positive Control Hop Mosaic Virus	1 vial (10 tests)	
07105NC	Negative Control Hop Mosaic Virus	1 vial (10 tests)	
07026	Hydrangea Ringspot Potexvirus. HRSV	Size	
	Host range: Hydrangea.	DAS ELISA	
	Transmission: grafting, mechanical inoculation, naturally without vector.		
07026S/100	Hydrangea Ringspot Virus set / 100	100 tests	
07026S/300	Hydrangea Ringspot Virus set / 300	300 tests	
07026S/500	Hydrangea Ringspot Virus set / 500	500 tests	
07026C/096	Hydrangea Ringspot Virus complete kit / 96	96 tests	
07026C/480	Hydrangea Ringspot Virus complete kit / 480	480 tests	
07026PC	Positive Control Hydrangea Ringspot Virus	1 vial (10 tests)	
07026NC	Negative Control Hydrangea Ringspot Virus	1 vial (10 tests)	

Product Section

07505	Impatiens Necrotic Spot Tospovirus. INSV	Size	
	Tospovirus serogroup III. Host range: many plant species.	DAS ELISA	
	Transmission by mechanical inoculation, thrips.		
07505S/100	Impatiens Necrotic Spot Virus set / 100	100 tests	
07505S/300	Impatiens Necrotic Spot Virus set / 300	300 tests	
07505S/500	Impatiens Necrotic Spot Virus set / 500	500 tests	
07505S/1000	Impatiens Necrotic Spot Virus set / 1000	1000 tests	
07505C/096	Impatiens Necrotic Spot Virus complete kit / 96	96 tests	
07505C/480	Impatiens Necrotic Spot Virus complete kit / 480	480 tests	
07505C/960	Impatiens Necrotic Spot Virus complete kit / 960	960 tests	
07505PC	Positive Control Impatiens Necrotic Spot Virus	1 vial (10 tests)	
07505NC	Negative Control Impatiens Necrotic Spot Virus	1 vial (10 tests)	
07508	Iris Yellow Spot Tospovirus. IYSV	Size	
	Tospovirus former serogroup V, Host range: garlic, Hippeastrum, Iris, leek, Lisianthus. Transmission by mechanical inoculation, thrips.	DAS ELISA	
07508S/100	Iris Yellow Spot Virus set / 100	100 tests	
07508S/300	Iris Yellow Spot Virus set / 300	300 tests	
07508S/500	Iris Yellow Spot Virus set / 500	500 tests	
07508S/1000	Iris Yellow Spot Virus set / 1000	1000 tests	
07508C/096	Iris Yellow Spot Virus complete kit / 96	96 tests	
07508C/480	Iris Yellow Spot Virus complete kit / 480	480 tests	
07508C/960	Iris Yellow Spot Virus complete kit / 960	960 tests	
07508PC	Positive Control Iris Yellow Spot Virus	1 vial (10 tests)	
07508NC	Negative Control Iris Yellow Spot Virus	1 vial (10 tests)	
07107	Johnson Grass Mosaic Potyvirus. JGMV	Size	
	(Syn.: Maize Dwarf Virus 0). Host range: Avena sativa, Sorghum, Zea mays	DAS ELISA	
	Transmission by aphids, mechanical inoculation.		
07107S/100	Johnson Grass Mosaic Virus set / 100	100 tests	
07107S/300	Johnson Grass Mosaic Virus set / 300	300 tests	
07107S/500	Johnson Grass Mosaic Virus set / 500	500 tests	
07107S/1000	Johnson Grass Mosaic Virus set / 1000	1000 tests	
07107C/096	Johnson Grass Mosaic Virus complete kit / 96	96 tests	
07107C/480	Johnson Grass Mosaic Virus complete kit / 480	480 tests	
07107C/960	Johnson Grass Mosaic Virus complete kit / 960	960 tests	
07107PC	Positive Control Johnson Grass Mosaic Virus	1 vial (10 tests)	
07107NC	Negative Control Johnson Grass Mosaic Virus	1 vial (10 tests)	
07027	Lettuce Mosaic Potyvirus. LMV	Size	
	(Syn.: Lactuca Virus 1). Host range: endive, lettuce, ornamentals, peas, spinach. Transmission by aphids, mechanical inoculation, seed.	DAS ELISA	
07027S/100	Lettuce Mosaic Virus set / 100	100 tests	
07027S/300	Lettuce Mosaic Virus set / 300	300 tests	
07027S/500	Lettuce Mosaic Virus set / 500	500 tests	
07027C/096	Lettuce Mosaic Virus complete kit / 96	96 tests	
07027C/480	Lettuce Mosaic Virus complete kit / 480	480 tests	
07027PC	Positive Control Lettuce Mosaic Virus	1 vial (10 tests)	
07027NC	Negative Control Lettuce Mosaic Virus	1 vial (10 tests)	

Product Section

07183	Lettuce Necrotic Stunt Tombusvirus. LNSV	Size	
	Host range: lettuce, tomato. Transmission: mech. inoculation, soilborne?	DAS ELISA	
07183S/100	Lettuce Necrotic Stunt Virus set / 100	100 tests	
07183S/300	Lettuce Necrotic Stunt Virus set / 300	300 tests	
07183S/500	Lettuce Necrotic Stunt Virus set / 500	500 tests	
07183S/1000	Lettuce Necrotic Stunt Virus set / 1000	1000 tests	
07183C/096	Lettuce Necrotic Stunt Virus complete kit / 96	96 tests	
07183C/480	Lettuce Necrotic Stunt Virus complete kit / 480	480 tests	
07183C/960	Lettuce Necrotic Stunt Virus complete kit / 960	960 tests	
07183PC	Positive Control Lettuce Necrotic Stunt Virus	1 vial (10 tests)	
07183NC	Negative Control Lettuce Necrotic Stunt Virus	1 vial (10 tests)	
07059	Maize Dwarf Mosaic Potyvirus. MDMV Syn.: MDMV-A, -D, -E, -F)	Size	
	Host range: Panicum spp., Saccharum spp., Zea maize.		
	Transmission by aphids, mechanical inoculation, seed.		
07059S/100	Maize Dwarf Virus set / 100	100 tests	
07059S/300	Maize Dwarf Virus set / 300	300 tests	
07059S/500	Maize Dwarf Virus set / 500	500 tests	
07059S/1000	Maize Dwarf Virus set / 1000	1000 tests	
07059C/096	Maize Dwarf Virus complete kit / 96	96 tests	
07059C/480	Maize Dwarf Virus complete kit / 480	480 tests	
07059C/960	Maize Dwarf Virus complete kit / 960	960 tests	
07059PC	Positive Control Maize Dwarf Virus	1 vial (10 tests)	
07059NC	Negative Control Maize Dwarf Virus	1 vial (10 tests)	
07066	Maize Chlorotic Mottle Machlovirus. MCMV	Size	
	Host range: Johnson grass, Saccharum spp., Zea maize etc.	DAS ELISA	
	Synergistic action with MDMVA and B (Corn Lethal Necrosis) .		
	Transmission: chrysomelid beetles, thrips, mechan. inoculation, seed		
07066S/100	Maize Chlorotic Mottle Virus set / 100	100 tests	
07066S/300	Maize Chlorotic Mottle Virus set / 300	300 tests	
07066S/500	Maize Chlorotic Mottle Virus set / 500	500 tests	
07066C/096	Maize Chlorotic Mottle Virus set / 96	96 tests	
07066C/480	Maize Chlorotic Mottle Virus set / 480	480 tests	
07066PC	Positive Control Maize Chlorotic Mottle Virus	1 vial (10 tests)	
07066NC	Negative Control Maize Chlorotic Mottle Virus	1 vial (10 tests)	
07097	Melon Necrotic Spot Carmovirus. MNSV	Size	
	Host range: cucurbitaceae. Transmission: fungus, contact, mechan., seed.	DAS ELISA	
07097S/100	Melon Necrotic Spot Virus set / 100	100 tests	
07097S/300	Melon Necrotic Spot Virus set / 300	300 tests	
07097S/500	Melon Necrotic Spot Virus set / 500	500 tests	
07097S/1000	Melon Necrotic Spot Virus set / 1000	1000 tests	
07097S/5000	Melon Necrotic Spot Virus set / 5000	5000 tests	
07097C/096	Melon Necrotic Spot Virus complete kit / 96	96 tests	
07097C/480	Melon Necrotic Spot Virus complete kit / 480	480 tests	
07097C/960	Melon Necrotic Spot Virus complete kit / 960	960 tests	
07097C/4800	Melon Necrotic Spot Virus complete kit / 4800	4800 tests	
07097PC	Positive Control Melon Necrotic Spot Virus	1 vial (10 tests)	
07097NC	Negative Control Melon Necrotic Spot Virus	1 vial (10 tests)	

Product Section

07149	Mirafiori Lettuce Big-Vein Ophiovirus. MiLBVV	Size	
	Host range: lettuce.	DAS ELISA	
	Transmission: mechanical inoculation, Olpidium brassicae.		
07149S/100	Mirafiori Lettuce Big-Vein Virus set / 100	100 tests	
07149S/300	Mirafiori Lettuce Big-Vein Virus set / 300	300 tests	
07149S/500	Mirafiori Lettuce Big-Vein Virus set / 500	500 tests	
07149C/096	Mirafiori Lettuce Big-Vein Virus complete kit / 96	96 tests	
07149C/480	Mirafiori Lettuce Big-Vein Virus complete kit / 480	480 tests	
07149PC	Positive Control Mirafiori Lettuce Big-Vein Virus	1 vial (10 tests)	
07149NC	Negative Control Mirafiori Lettuce Big-Vein Virus	1 vial (10 tests)	
07156	Moroccan Watermelon Mosaic Potyvirus. MWMV	Size	
	Host range: Cucurbitaceae.	DAS ELISA	
	Transmission: aphids, mechanical inoculation.		
07156S/100	Moroccan Watermelon Mosaic Virus set / 100	100 tests	
07156S/300	Moroccan Watermelon Mosaic Virus set / 300	300 tests	
07156S/500	Moroccan Watermelon Mosaic Virus set / 500	500 tests	
07156S/096	Moroccan Watermelon Mosaic Virus complete kit / 96	96 tests	
07156S/480	Moroccan Watermelon Mosaic Virus complete kit / 480	480 tests	
07156PC	Positive Control Moroccan Watermelon Mosaic Virus	1 vial (10 tests)	
07156NC	Negative Control Moroccan Watermelon Mosaic Virus	1 vial (10 tests)	
07098	Nemesia Ring Necrosis Tymovirus. NeRNV	Size	
	Host range: many ornamental plants	DAS ELISA	
	Transmission: beetles, mechanical inoculation, vegetative propagation		
07098S/100	Nemesia Ring Necrosis Virus set / 100	100 tests	
07098S/300	Nemesia Ring Necrosis Virus set / 300	300 tests	
07098S/500	Nemesia Ring Necrosis Virus set / 500	500 tests	
07098S/096	Nemesia Ring Necrosis Virus complete kit / 96	96 tests	
07098S/480	Nemesia Ring Necrosis Virus complete kit / 480	480 tests	
07156PC	Positive Control Nemesia Ring Necrosis Virus	1 vial (10 tests)	
07156NC	Negative Control Nemesia Ring Necrosis Virus	1 vial (10 tests)	
07028	Odontoglossum Ringspot Tobamovirus. ORSV	Size	
	Host range: orchids.	DAS ELISA	
	Transmission by mechanical inoculation, not by a vector.		
07028S/100	Odontoglossum Ringspot Virus set / 100	100 tests	
07028S/300	Odontoglossum Ringspot Virus set / 300	300 tests	
07028S/500	Odontoglossum Ringspot Virus set / 500	500 tests	
07028C/096	Odontoglossum Ringspot Virus complete kit / 96	96 tests	
07028C/480	Odontoglossum Ringspot Virus complete kit / 480	480 tests	
07028PC	Positive Control Odontoglossum Ringspot Virus	1 vial (10 tests)	
07028NC	Negative Control Odontoglossum Ringspot Virus	1 vial (10 tests)	

Product Section

07151	Olive Latent Necrovirus-1. OLV-1	Size	
	Host range: Olive.	DAS ELISA	
	Transmission: mechanical inoculation. Soil-transmitted without vector.		
07151S/100	Olive Latent Virus-1 set / 100	100 tests	
07151S/300	Olive Latent Virus-1 set / 300	300 tests	
07151S/500	Olive Latent Virus-1 set / 500	500 tests	
07151S/1000	Olive Latent Virus-1 set / 1000	1000 tests	
07151C/096	Olive Latent Virus-1 complete kit / 96	96 tests	
07151C/480	Olive Latent Virus-1 complete kit / 480	480 tests	
07151C/960	Olive Latent Virus-1 complete kit / 960	960 tests	
07151PC	Positive Control Olive Latent Virus-1	1 vial (10 tests)	
07151NC	Negative Control Olive Latent Virus-1	1 vial (10 tests)	
07111	Onion Yellow Dwarf Potyvirus. OYDV	Size	
	Host range: Allium species. Transmission by aphids and mech. inoculation	DAS ELISA	
07111S/100	Onion Yellow Dwarf Virus set / 100	100 tests	
07111S/300	Onion Yellow Dwarf Virus set / 300	300 tests	
07111S/500	Onion Yellow Dwarf Virus set / 500	500 tests	
07111C/096	Onion Yellow Dwarf Virus complete kit / 96	96 tests	
07111C/480	Onion Yellow Dwarf Virus complete kit / 480	480 tests	
07111PC	Positive Control Onion Yellow Dwarf Virus	1 vial (10 tests)	
07111NC	Negative Control Onion Yellow Dwarf Virus	1 vial (10 tests)	
07060	Papaya Ringspot Potyvirus. PRSV (Watermelon Mosaic Virus I)	Size	
	Host range: Cucurbitaceae, Papaya. Transmission by aphids, mech. inocul.	DAS ELISA	
07060S/100	Papaya Ringspot Virus set / 100	100 tests	
07060S/300	Papaya Ringspot Virus set / 300	300 tests	
07060S/500	Papaya Ringspot Virus set / 500	500 tests	
07060S/1000	Papaya Ringspot Virus set / 1000	1000 tests	
07060C/096	Papaya Ringspot Virus complete kit / 96	96 tests	
07060C/480	Papaya Ringspot Virus complete kit / 480	480 tests	
07060C/960	Papaya Ringspot Virus complete kit / 960	960 tests	
07060PC	Positive Control Papaya Ringspot Virus	1 vial (10 tests)	
07060NC	Negative Control Papaya Ringspot Virus	1 vial (10 tests)	
07065	Paprika Mild Mottle Tobamovirus. PaMMV	Size	
	Host range: Capsicum species.	DAS ELISA	
	Transmission by mechanical inoculation and possibly by seeds.		
07065S/100	Paprika Mild Mottle Virus set / 100	100 tests	
07065S/300	Paprika Mild Mottle Virus set / 300	300 tests	
07065S/500	Paprika Mild Mottle Virus set / 500	500 tests	
07065S/1000	Paprika Mild Mottle Virus set / 1000	1000 tests	
07065C/096	Paprika Mild Mottle Virus complete kit / 96	96 tests	
07065C/480	Paprika Mild Mottle Virus complete kit / 480	480 tests	
07065C/960	Paprika Mild Mottle Virus complete kit / 960	960 tests	
07065PC	Positive Control Paprika Mild Mottle Virus	1 vial (10 tests)	
07065NC	Negative Control Paprika Mild Mottle Virus	1 vial (10 tests)	

Product Section

07029	Pea Enation Mosaic Enamovirus. PEMV	Size	
	Enamovirus. Host range: Leguminosae.	DAS ELISA	
	Transmission by aphids and mechanical inoculation.		
07029S/100	Pea Enation Mosaic Virus set / 100	100 tests	
07029S/300	Pea Enation Mosaic Virus set / 300	300 tests	
07029S/500	Pea Enation Mosaic Virus set / 500	500 tests	
07029C/096	Pea Enation Mosaic Virus complete kit / 96	96 tests	
07029C/480	Pea Enation Mosaic Virus complete kit / 480	480 tests	
07029PC	Positive Control Pea Enation Mosaic Virus	1 vial (10 tests)	
07029NC	Negative Control Pea Enation Mosaic Virus	1 vial (10 tests)	
07030	Pea Seed-borne Mosaic Potyvirus. PSbMV	Size	
	Host range: Leguminosae. Transmission by aphids, seed.	DAS ELISA	
07030S/100	Pea Seed-borne Mosaic Virus set / 100	100 tests	
07030S/300	Pea Seed-borne Mosaic Virus set / 300	300 tests	
07030S/500	Pea Seed-borne Mosaic Virus set / 500	500 tests	
07030C/096	Pea Seed-borne Mosaic Virus complete kit / 96	96 tests	
07030C/480	Pea Seed-borne Mosaic Virus complete kit / 480	480 tests	
07030PC	Positive Control Pea Seed-borne Mosaic Virus	1 vial (10 tests)	
07030NC	Negative Control Pea Seed-borne Mosaic Virus	1 vial (10 tests)	
07073	Pelargonium Flower Break Carmovirus. PFBV	Size	
	Host range: Pelargonium species. Transmission by contact, grafting.	DAS ELISA	
07073S/100	Pelargonium Flower Break Virus set / 100	100 tests	
07073S/300	Pelargonium Flower Break Virus set / 300	300 tests	
07073S/500	Pelargonium Flower Break Virus set / 500	500 tests	
07073C/096	Pelargonium Flower Break Virus complete kit / 96	96 tests	
07073C/480	Pelargonium Flower Break Virus complete kit / 480	480 tests	
07073PC	Positive Control Pelargonium Flower Break Virus	1 vial (10 tests)	
07073NC	Negative Control Pelargonium Flower Break Virus	1 vial (10 tests)	
07083	Pelargonium Leafcurl Tombusvirus. PLCV	Size	
	Host range: Pelargonium species. Transmission by contact, grafting, mechan.	DAS ELISA	
07083S/100	Pelargonium Leafcurl Virus set / 100	100 tests	
07083S/300	Pelargonium Leafcurl Virus set / 300	300 tests	
07083S/500	Pelargonium Leafcurl Virus set / 500	500 tests	
07083C/096	Pelargonium Leafcurl Virus complete kit / 96	96 tests	
07083C/480	Pelargonium Leafcurl Virus complete kit / 480	480 tests	
07083PC	Positive Control Pelargonium Leafcurl Virus	1 vial (10 tests)	
07083NC	Negative Control Pelargonium Leafcurl Virus	1 vial (10 tests)	
07094	Pelargonium Line Pattern Carmovirus. PLPV	Size	
	Host range: Pelargonium species.	DAS ELISA	
	Transmission by contacts, grafting and mechanical inoculation.		
07094S/100	Pelargonium Line Pattern Virus set / 100	100 tests	
07094S/300	Pelargonium Line Pattern Virus set / 300	300 tests	
07094S/500	Pelargonium Line Pattern Virus set / 500	500 tests	
07094C/096	Pelargonium Line Pattern Virus complete kit / 96	96 tests	
07094C/480	Pelargonium Line Pattern Virus complete kit / 480	480 tests	
07094PC	Positive Control Pelargonium Line Pattern Virus	1 vial (10 tests)	
07094NC	Negative Control Pelargonium Line Pattern Virus	1 vial (10 tests)	

Product Section

	Pepino Latent Carlavirus see Potato Carlavirus S		
07128	Pepino Mosaic Potexvirus. PepMV	Size	
	Host range: pepino, tomato.	DAS ELISA	
	Transmitted by contact, mechanical inoculation and seed.		
07128S/100	Pepino Mosaic Virus set / 100	100 tests	
07128S/300	Pepino Mosaic Virus set / 300	300 tests	
07128S/500	Pepino Mosaic Virus set / 500	500 tests	
07128S/1000	Pepino Mosaic Virus set / 1000	1000 tests	
07128S/5000	Pepino Mosaic Virus set / 5000	5000 tests	
07128C/096	Pepino Mosaic Virus complete kit / 96	96 tests	
07128C/480	Pepino Mosaic Virus complete kit / 480	480 tests	
07128C/960	Pepino Mosaic Virus complete kit / 960	960 tests	
07128C/4800	Pepino Mosaic Virus complete kit / 4800	4800 tests	
07128PC	Positive Control Pepino Mosaic Virus inactivated	1 vial (10 tests)	
07210PC	ELISA Method Control GAR unspecific	1 vial (10 tests)	
07128NC	Negative Control Pepino Mosaic Virus	1 vial (10 tests)	
07096	Pepper Mild Mottle Tobamovirus. PMMoV	Size	
	Host range: Capsicum species.	DAS ELISA	
	Transmission by contacts, grafting, mechanical inoculation and seed.		
07096S/100	Pepper Mild Mottle Virus set / 100	100 tests	
07096S/300	Pepper Mild Mottle Virus set / 300	300 tests	
07096S/500	Pepper Mild Mottle Virus set / 500	500 tests	
07096S/1000	Pepper Mild Mottle Virus set / 1000	1000 tests	
07096S/5000	Pepper Mild Mottle Virus set / 5000	5000 tests	
07096C/096	Pepper Mild Mottle Virus complete kit / 96	96 tests	
07096C/480	Pepper Mild Mottle Virus complete kit / 480	480 tests	
07096C/960	Pepper Mild Mottle Virus complete kit / 960	960 tests	
07096C/4800	Pepper Mild Mottle Virus complete kit / 4800	4800 tests	
07096PC	Positive Control Pepper Mild Mottle Virus	1 vial (10 tests)	
07096NC	Negative Control Pepper Mild Mottle Virus	1 vial (10 tests)	
07050	Pepper Mottle Potyvirus (Chilli Mottle Potyvirus). PepMoV	Size	
	Host range: pepper.	DAS ELISA	
	Transmission: contact, grafting, mechanical inoculation, seed.		
07050S/100	Pepper Mottle Virus set / 100	100 tests	
07050S/300	Pepper Mottle Virus set / 300	300 tests	
07050S/500	Pepper Mottle Virus set / 500	500 tests	
07050C/096	Pepper Mottle Virus complete kit / 96	96 tests	
07050C/480	Pepper Mottle Virus complete kit / 480	480 tests	
07050PC	Positive Control Pepper Mottle Virus	1 vial (10 tests)	
07050NC	Negative Control Pepper Mottle Virus	1 vial (10 tests)	

Product Section

07159	Pepper Veinal Mottle Potyvirus. PVMV	Size	
	Host range: Solanaceae.	DAS ELISA	
	Transmission by aphids, grafting and mechanical inoculation.		
07159S/100	Pepper Veinal Mottle Virus set / 100	100 tests	
07159S/300	Pepper Veinal Mottle Virus set / 300	300 tests	
07159S/500	Pepper Veinal Mottle Virus set / 500	500 tests	
07159S/1000	Pepper Veinal Mottle Virus set / 1000	1000 tests	
07159C/096	Pepper Veinal Mottle Virus complete kit / 96	96 tests	
07159C/480	Pepper Veinal Mottle Virus complete kit / 480	480 tests	
07159C/960	Pepper Veinal Mottle Virus complete kit / 960	960 tests	
07159PC	Positive Control Pepper Veinal Mottle Virus	1 vial (10 tests)	
07159NC	Negative Control Pepper Veinal Mottle Virus	1 vial (10 tests)	
07061	Petunia Asteroid Mosaic Tombusvirus. PeAMV	Size	
	Host range: hop, petunia, Prunus species, etc.	DAS ELISA	
	Trasnmision by contaminated soil, grafting and mechanical inoculation.		
07061S/100	Petunia Asteroid Mosaic Virus set	100 tests	
07061S/300	Petunia Asteroid Mosaic Virus set / 300	300 tests	
07061S/500	Petunia Asteroid Mosaic Virus set / 500	500 tests	
07061S/1000	Petunia Asteroid Mosaic Virus set / 1000	1000 tests	
07061C/096	Petunia Asteroid Mosaic Virus complete kit / 96	96 tests	
07061C/480	Petunia Asteroid Mosaic Virus complete kit / 480	480 tests	
07061C/960	Petunia Asteroid Mosaic Virus complete kit / 960	960 tests	
07061PC	Positive Control Petunia Asteroid Mosaic Virus	1 vial (10 tests)	
07061NC	Negative Control Petunia Asteroid Mosaic Virus	1 vial (10 tests)	
07163	Plum Pox Potyvirus D. PPV D	Size	
	MAB provided by PlantPrint Diagnostics	DAS ELISA poly/mono	
	Host range: Prunus species. Transmission by aphids, mechan. inoculation.		
07163S/100	Plum Pox Virus D set / 100	100 tests	
07163S/300	Plum Pox Virus D set / 300	300 tests	
07163S/500	Plum Pox Virus D set / 500	500 tests	
07163C/096	Plum Pox Virus D complete kit / 96	96 tests	
07163C/480	Plum Pox Virus D complete kit / 480	480 tests	
07163PC	Positive Control Plum Pox Virus D inactivated	1 vial (10 tests)	
07212PC	ELISA Method Control GAR unspecific	1 vial (10 tests)	
07163NC	Negative Control Plum Pox Virus	1 vial (10 tests)	
07186	Plum Pox Potyvirus universal	Size	
	SIVIA-B MAB provided by PlantPrint Diagnostics		
	Host range: Prunus species. Transmission by aphids, mechan. inoculation.	DAS ELISA poly/mono	
07186S/100	Plum Pox Virus set / 100	100 tests	
07186S/300	Plum Pox Virus set / 300	300 tests	
07186S/500	Plum Pox Virus set / 500	500 tests	
07186S/1000	Plum Pox Virus set / 1000	1000 tests	
07186C/096	Plum Pox Virus complete kit / 96	96 tests	
07186C/480	Plum Pox Virus complete kit / 480	480 tests	
07186C/960	Plum Pox Virus complete kit / 960	960 tests	
07186PC	Positive Control Plum Pox Virus inactivated	1 vial (10 tests)	
07210PC	ELISA Method Control GAR unspecific	1 vial (10 tests)	
07186NC	Negative Control Plum Pox Virus	1 vial (10 tests)	

Product Section

07109	Poinsettia Mosaic Virus. PnMV	Size	
	Marafivirus. Host range: Euphorbia species.	DAS ELISA	
	Transmission by grafting and mechanical inoculation.		
07109S/100	Poinsettia Mosaic Virus set / 100	100 tests	
07109S/300	Poinsettia Mosaic Virus set / 300	300 tests	
07109S/500	Poinsettia Mosaic Virus set / 500	500 tests	
07109C/096	Poinsettia Mosaic Virus complete kit / 96	96 tests	
07109C/480	Poinsettia Mosaic Virus complete kit / 480	480 tests	
07109PC	Positive Control Poinsettia Mosaic Virus	1 vial (10 tests)	
07109NC	Negative Control Poinsettia Mosaic Virus	1 vial (10 tests)	
07032	Potato A Potyvirus. PVA		
	Host range: Solanaceae. Transmission by aphids and mechan. inoculation	DAS ELISA	
07032S/100	Potato Virus A set / 100	100 tests	
07032S/300	Potato Virus A set / 300	300 tests	
07032S/500	Potato Virus A set / 500	500 tests	
07032S/1000	Potato Virus A set / 1000	1000 tests	
07032S/5000	Potato Virus A set / 5000	5000 tests	
07032C/096	Potato Virus A complete kit / 96	96 tests	
07032C/480	Potato Virus A complete kit / 480	480 tests	
07032C/960	Potato Virus A complete kit / 960	960 tests	
07032C/4800	Potato Virus A complete kit / 4800	4800 tests	
07032PC	Positive Control Potato Virus A	1 vial (10 tests)	
07032NC	Negative Control Potato Virus A	1 vial (10 tests)	
07165	Potato Aucuba Mosaic Potexvirus. PAMV	Size	
	Host range: potato. Transmission: aphids, mechanical inoculation.	DAS ELISA	
07165S/100	Potato Aucuba Mosaic Virus set / 100	100 tests	
07165S/300	Potato Aucuba Mosaic Virus set / 300	300 tests	
07165S/500	Potato Aucuba Mosaic Virus set / 500	500 tests	
07165S/1000	Potato Aucuba Mosaic Virus set / 1000	1000 tests	
07165C/096	Potato Aucuba Mosaic Virus complete kit / 96	96 tests	
07165C/480	Potato Aucuba Mosaic Virus complete kit / 480	480 tests	
07165C/960	Potato Aucuba Mosaic Virus complete kit / 960	960 tests	
07165PC	Positive Control Potato Aucuba Mosaic Virus	1 vial (10 tests)	
07165NC	Negative Control Potato Aucuba Mosaic Virus	1 vial (10 tests)	
07145	Potato Black Ringspot Nepovirus. PBRSV	Size	
	(Sy.: Potato Calico strain of Tobacco Ringspot Virus)	DAS ELISA	
	Host range: Potatoes, other solanaceous plants susceptible.		
	Transmission by grafting and mechanical inoculation.		
07145S/100	Potato Black Ringspot Virus set / 100	100 tests	
07145S/300	Potato Black Ringspot Virus set / 300	300 tests	
07145S/500	Potato Black Ringspot Virus set / 500	500 tests	
07145S/1000	Potato Black Ringspot Virus set / 1000	1000 tests	
07145C/096	Potato Black Ringspot Virus complete kit / 96	96 tests	
07145C/480	Potato Black Ringspot Virus complete kit / 480	480 tests	
07145C/960	Potato Black Ringspot Virus complete kit / 960	960 tests	
07145PC	Positive Control Potato Black Ringspot Virus inactivated	1 vial (10 tests)	
07210PC	ELISA Method Control GAR unpecific	1 vial (10 tests)	
07145NC	Negative Control Potato Black Ringspot Virus	1 vial (10 tests)	

Product Section

07031	Potato Leafroll Polerovirus. PLRV	Size	
	Host range: potatoes and some other solanaceous species.	DAS ELISA	
	Transmission by aphids and grafting.		
07031S/100	Potato Leafroll Virus set / 100	100 tests	
07031S/300	Potato Leafroll Virus set / 300	300 tests	
07031S/500	Potato Leafroll Virus set / 500	500 tests	
07031S/1000	Potato Leafroll Virus set / 1000	1000 tests	
07031S/5000	Potato Leafroll Virus set / 5000	5000 tests	
07031C/096	Potato Leafroll Virus complete kit / 96	96 tests	
07031C/480	Potato Leafroll Virus complete kit / 480	480 tests	
07031C/960	Potato Leafroll Virus complete kit / 960	960 tests	
07031C/4800	Potato Leafroll Virus complete kit / 4800	4800 tests	
07031PC	Positive Control Potato Leafroll Virus	1 vial (10 tests)	
07210PC	ELISA Method Control GAR unpecific	1 vial (10 tests)	
07031NC	Negative Control Potato Leafroll Virus	1 vial (10 tests)	
07033	Potato M Carlavirus. PVM	Size	
	Host range: potatoes and other solanaceous species.	DAS ELISA	
	Transmission by aphids, grafting and mechanical inoculation.		
07033S/100	Potato Virus M set / 100	100 tests	
07033S/300	Potato Virus M set / 300	300 tests	
07033S/500	Potato Virus M set / 500	500 tests	
07033S/1000	Potato Virus M set / 1000	1000 tests	
07033S/5000	Potato Virus M set / 5000	5000 tests	
07033C/096	Potato Virus M complete kit / 96	96 tests	
07033C/480	Potato Virus M complete kit / 480	480 tests	
07033C/960	Potato Virus M complete kit / 960	960 tests	
07033C/4800	Potato Virus M complete kit / 4800	4800 tests	
07033PC	Positive Control Potato Virus M	1 vial (10 tests)	
07033NC	Negative Control Potato Virus M	1 vial (10 tests)	
07034	Potato S Carlavirus. PVS (Pepino Latent Virus)	Size	
	Host range: potatoes.	DAS ELISA	
	Transmission by aphids and mechanical inoculation.		
07034S/100	Potato Virus S set / 100	100 tests	
07034S/300	Potato Virus S set / 300	300 tests	
07034S/500	Potato Virus S set / 500	500 tests	
07034S/1000	Potato Virus S set / 1000	1000 tests	
07034S/5000	Potato Virus S set / 5000	5000 tests	
07034C/096	Potato Virus S complete kit / 96	96 tests	
07034C/480	Potato Virus S complete kit / 480	480 tests	
07034C/960	Potato Virus S complete kit / 960	960 tests	
07034C/4800	Potato Virus S complete kit / 4800	4800 tests	
07034PC	Positive Control Potato Virus S	1 vial (10 tests)	
07034NC	Negative Control Potato Virus S	1 vial (10 tests)	

Product Section

07037	Potato X Potexvirus. PVX	Size	
	Host range: potatoes.	DAS ELISA	
	Transmission by contacts between plants and by mechanical inoculation.		
07037S/100	Potato Virus X set / 100	100 tests	
07037S/300	Potato Virus X set / 300	300 tests	
07037S/500	Potato Virus X set / 500	500 tests	
07037S/1000	Potato Virus X set / 1000	1000 tests	
07037S/5000	Potato Virus X set / 5000	5000 tests	
07037C/096	Potato Virus X complete kit / 96	96 tests	
07037C/480	Potato Virus X complete kit / 480	480 tests	
07037C/960	Potato Virus X complete kit / 960	960 tests	
07037C/4800	Potato Virus X complete kit / 4800	4800 tests	
07037PC	Positive Control Potato Virus X	1 vial (10 tests)	
07037NC	Negative Control Potato Virus X	1 vial (10 tests)	
07038	Potato Y Potyvirus. PVY	Size	
	Host range: solanaceous plants.	DAS ELISA	
	Transmission by aphids, grafting and by mechanical inoculation.		
07038S/100	Potato Virus Y set / 100	100 tests	
07038S/300	Potato Virus Y set / 300	300 tests	
07038S/500	Potato Virus Y set / 500	500 tests	
07038S/1000	Potato Virus Y set / 1000	1000 tests	
07038S/5000	Potato Virus Y set / 5000	5000 tests	
07038C/096	Potato Virus Y complete kit / 96	96 tests	
07038C/480	Potato Virus Y complete kit / 480	480 tests	
07038C/960	Potato Virus Y complete kit / 960	960 tests	
07038C/4800	Potato Virus Y complete kit / 4800	4800 tests	
07038PC	Positive Control Potato Virus Y	1 vial (10 tests)	
07038NC	Negative Control Potato Virus Y	1 vial (10 tests)	
07051	Prune Dwarf Ilarvirus. PDV	Size	
	Host range: Prunus species.	DAS ELISA	
	Transmission by grafting, mechanical inoculation, pollen-to-seed, seed.		
07051S/100	Prune Dwarf Virus set / 100	100 tests	
07051S/300	Prune Dwarf Virus set / 300	300 tests	
07051S/500	Prune Dwarf Virus set / 500	500 tests	
07051S/1000	Prune Dwarf Virus set / 1000	1000 tests	
07051C/096	Prune Dwarf Virus complete kit / 96	96 tests	
07051C/480	Prune Dwarf Virus complete kit / 480	480 tests	
07051C/960	Prune Dwarf Virus complete kit / 960	960 tests	
07051PC	Positive Control Prune Dwarf Virus	1 vial (10 tests)	
07051NC	Negative Control Prune Dwarf Virus	1 vial (10 tests)	

Product Section

07052	Prunus Necrotic Ringspot Ilarvirus. PNRV	Size	
	Host range: cucumber, hop, Prunus species.	DAS ELISA	
	Transmission by grafting, mechanical inoculation, pollen-to-seed, seed.		
07052S/100	Prunus Necrotic Ringspot Virus set / 100	100 tests	
07052S/300	Prunus Necrotic Ringspot Virus set / 300	300 tests	
07052S/500	Prunus Necrotic Ringspot Virus set / 500	500 tests	
07052S/1000	Prunus Necrotic Ringspot Virus set / 1000	1000 tests	
07052C/096	Prunus Necrotic Ringspot Virus complete kit / 96	96 tests	
07052C/480	Prunus Necrotic Ringspot Virus complete kit / 480	480 tests	
07052C/960	Prunus Necrotic Ringspot Virus complete kit / 960	960 tests	
07052PC	Positive Control Prunus Necrotic Ringspot Virus	1 vial (10 tests)	
07052NC	Negative Control Prunus Necrotic Ringspot Virus	1 vial (10 tests)	
07087	Radish Mosaic Comovirus. RaMV	Size	
	Host range: Brassica species. Transmission: beetle, grafting, mechan.	DAS ELISA	
07087S/100	Radish Mosaic Virus set / 100	100 tests	
07087S/300	Radish Mosaic Virus set / 300	300 tests	
07087S/500	Radish Mosaic Virus set / 500	500 tests	
07087S/1000	Radish Mosaic Virus set / 1000	1000 tests	
07087C/096	Radish Mosaic Virus complete kit / 96	96 tests	
07087C/480	Radish Mosaic Virus complete kit / 480	480 tests	
07087C/960	Radish Mosaic Virus complete kit / 960	960 tests	
07087PC	Positive Control Radish Mosaic Virus	1 vial (10 tests)	
07087NC	Negative Control Radish Mosaic Virus	1 vial (10 tests)	
07080	Raspberry Bushy Dwarf Idaeovirus. RBDV	Size	
	Host range: Rubus species.	DAS ELISA	
	Transmission by grafting, mechanical inoculation and seed.		
07080S/100	Raspberry Bushy Dwarf Virus set / 100	100 tests	
07080S/300	Raspberry Bushy Dwarf Virus set / 300	300 tests	
07080S/500	Raspberry Bushy Dwarf Virus set / 500	500 tests	
07080S/1000	Raspberry Bushy Dwarf Virus set / 1000	1000 tests	
07080C/096	Raspberry Bushy Dwarf Virus complete kit / 96	96 tests	
07080C/480	Raspberry Bushy Dwarf Virus complete kit / 480	480 tests	
07080C/960	Raspberry Bushy Dwarf Virus complete kit / 960	960 tests	
07080PC	Positive Control Raspberry Bushy Dwarf Virus	1 vial (10 tests)	
07080NC	Negative Control Raspberry Bushy Dwarf Virus	1 vial (10 tests)	
07141	Raspberry Ringspot Nepovirus Broad Range. RpRSV	Size	
	Artificial mixture of antisera (ch, g, r)	DAS ELISA	
	Host range: grapevine, Rubus species, strawberry.		
	Transmission by mechan. inoculation, nematodes, pollen-to-seed, seed.		
07141S/100	Raspberry Ringspot Virus set / 100	100 tests	
07141S/300	Raspberry Ringspot Virus set / 300	300 tests	
07141S/500	Raspberry Ringspot Virus set / 500	500 tests	
07141S/1000	Raspberry Ringspot Virus set / 1000	1000 tests	
07141C/096	Raspberry Ringspot Virus complete kit / 96	96 tests	
07141C/480	Raspberry Ringspot Virus complete kit / 480	480 tests	
07141C/960	Raspberry Ringspot Virus complete kit / 960	960 tests	
	continued on next page		

Product Section

07141PC	Positive Control Raspberry Ringspot Virus inactivated	1 vial (10 tests)	
07210PC	ELISA Method Control GAR unspecific	1 vial (10 tests)	
07141NC	Negative Control Raspberry Ringspot Virus	1 vial (10 tests)	
07142	Raspberry Ringspot Nepovirus (cherry isolate). RpRSV ch	Size	
	Pfeffinger Disease	DAS ELISA	
07142S/100	Raspberry Ringspot Virus ch set / 100	100 tests	
07142S/300	Raspberry Ringspot Virus ch set / 300	300 tests	
07142S/500	Raspberry Ringspot Virus ch set / 500	500 tests	
07142C/096	Raspberry Ringspot Virus ch complete kit / 96	96 tests	
07142C/480	Raspberry Ringspot Virus ch complete kit / 480	480 tests	
07142PC	Positive Control Raspberry Ringspot Virus ch inactivated	1 vial (10 tests)	
07210PC	ELISA Method Control GAR unspecific	1 vial (10 tests)	
07142NC	Negative Control Raspberry Ringspot Virus ch	1 vial (10 tests)	
07144	Raspberry Ringspot Nepovirus (grapevine isolate). RpRSV g	Size	
		DAS ELISA	
07144S/100	Raspberry Ringspot Virus g set / 100	100 tests	
07144S/300	Raspberry Ringspot Virus g set / 300	300 tests	
07144S/500	Raspberry Ringspot Virus g set / 500	500 tests	
07144C/096	Raspberry Ringspot Virus g complete kit / 96	96 tests	
07144C/480	Raspberry Ringspot Virus g complete kit / 480	480 tests	
07144PC	Positive Control Raspberry Ringspot Virus g inactivated	1 vial (10 tests)	
07210PC	ELISA Method Control GAR unspecific	1 vial (10 tests)	
07144NC	Negative Control Raspberry Ringspot Virus g	1 vial (10 tests)	
07143	Raspberry Ringspot Nepovirus (raspberry isolate). RpRSV r	Size	
		DAS ELISA	
07143S/100	Raspberry Ringspot Virus r set / 100	100 tests	
07143S/300	Raspberry Ringspot Virus r set / 300	300 tests	
07143S/500	Raspberry Ringspot Virus r set / 500	500 tests	
07143C/096	Raspberry Ringspot Virus r complete kit / 96	96 tests	
07143C/480	Raspberry Ringspot Virus r complete kit / 480	480 tests	
07143PC	Positive Control Raspberry Ringspot Virus r inactivated	1 vial (10 tests)	
07210PC	ELISA Method Control GAR unspecific	1 vial (10 tests)	
07143NC	Negative Control Raspberry Ringspot Virus r	1 vial (10 tests)	
07040	Red Clover Mottle Comovirus. RCMV	Size	
	Host range: Trifolium pratense.	DAS ELISA	
	Transmission by beetles and mechanical inoculation.		
07040S/100	Red Clover Mottle Virus set / 100	100 tests	
07040S/300	Red Clover Mottle Virus set / 300	300 tests	
07040S/500	Red Clover Mottle Virus set / 500	500 tests	
07040S/1000	Red Clover Mottle Virus set / 1000	1000 tests	
07040C/096	Red Clover Mottle Virus complete kit / 96	96 tests	
07040C/480	Red Clover Mottle Virus complete kit / 480	480 tests	
07040C/960	Red Clover Mottle Virus complete kit / 960	960 tests	
07040PC	Positive Control Red Clover Mottle Virus	1 vial (10 tests)	
07040NC	Negative Control Red Clover Mottle Virus	1 vial (10 tests)	

Product Section

07133	Rice Yellow Mottle Sobemovirus. RYMV	Size	
	Host range: rice.	DAS ELISA	
	Transmission by beetles and mechanical inoculation.		
07133S/100	Rice Yellow Mottle Virus set / 100	100 tests	
07133S/300	Rice Yellow Mottle Virus set / 300	300 tests	
07133S/500	Rice Yellow Mottle Virus set / 500	500 tests	
07133C/096	Rice Yellow Mottle Virus complete kit / 96	96 tests	
07133C/480	Rice Yellow Mottle Virus complete kit / 480	480 tests	
07133PC	Positive Control Rice Yellow Mottle Virus	1 vial (10 tests)	
07133NC	Negative Control Rice Yellow Mottle Virus	1 vial (10 tests)	
07173	Soil-borne Cereal Mosaic Furovirus. SbCMV polyclonal/ monoclonal	Size	
	Host range: barley, wheat, rye.	TAS ELISA	
	Transmission by a soil-borne fungus.		
07173S/100	Soil-borne Cereal Mosaic Virus set / 100	100 tests	
07173S/300	Soil-borne Cereal Mosaic Virus set / 300	300 tests	
07173S/500	Soil-borne Cereal Mosaic Virus set / 500	500 tests	
07173C/096	Soil-borne Cereal Mosaic Virus complete kit / 96	96 tests	
07173C/480	Soil-borne Cereal Mosaic Virus complete kit / 480	480 tests	
07173PC	Soil-borne Cereal Mosaic Virus Positive Control	1 vial (10 tests)	
07173NC	Soil-borne Cereal Mosaic Virus Negative Control	1 vial (10 tests)	
07174	Soil-borne Wheat Mosaic Furovirus. SbWMV monoclonal / monoclonal	Size	
	Host range: barley, wheat, rye.	DAS ELISA	
	Transmission by a soil-borne fungus.		
07174S/100	Soil-borne Wheat Mosaic Virus set / 100	100 tests	
07174S/300	Soil-borne Wheat Mosaic Virus set / 300	300 tests	
07174S/500	Soil-borne Wheat Mosaic Virus set / 500	500 tests	
07174C/096	Soil-borne Wheat Mosaic Virus complete kit / 96	96 tests	
07174C/480	Soil-borne Wheat Mosaic Virus complete kit / 480	480 tests	
07174PC	Positive Control Soil-borne Wheat Mosaic Virus	1 vial (10 tests)	
07174NC	Negative Control Soil-borne Wheat Mosaic Virus	1 vial (10 tests)	
07106	Sorghum Mosaic Potyvirus. SrMV	Size	
	Host range Sorghum, Sugar Cane.	DAS ELISA	
	Transmission by aphids.		
07106S/100	Sorghum Mosaic Virus set / 100	100 tests	
07106S/300	Sorghum Mosaic Virus set / 300	300 tests	
07106S/500	Sorghum Mosaic Virus set / 500	500 tests	
07106S/1000	Sorghum Mosaic Virus set / 1000	1000 tests	
07106C/096	Sorghum Mosaic Virus complete kit / 96	96 tests	
07106C/480	Sorghum Mosaic Virus complete kit / 480	480 tests	
07106C/960	Sorghum Mosaic Virus complete kit / 960	960 tests	
07106PC	Positive Control Sorghum Mosaic Virus	1 vial (10 tests)	
07106NC	Negative Control Sorghum Mosaic Virus	1 vial (10 tests)	

Product Section

07179	Southern Bean Mosaic Sobemovirus. SBMV	Size	
	Host range: bean.	DAS ELISA	
	Transmission: Coleoptera, grafting, mechan. inoculation.		
07179S/100	Southern Bean Mosaic Virus set / 100	100 tests	
07179S/300	Southern Bean Mosaic Virus set / 300	300 tests	
07179S/500	Southern Bean Mosaic Virus set / 500	500 tests	
07179C/096	Southern Bean Mosaic Virus complete kit / 96	96 tests	
07179C/480	Southern Bean Mosaic Virus complete kit / 480	480 tests	
07179PC	Positive Control Southern Bean Mosaic Virus	1 vial (10 tests)	
07179NC	Negative Control Southern Bean Mosaic Virus	1 vial (10 tests)	
07074	Soybean Mosaic Potyvirus. SMV		
	Host range: soybeans.	DAS ELISA	
	Transmission by aphids, mechanical inoculation, pollen-to-seed, seed.		
07074S/100	Soybean Mosaic Virus set / 100	100 tests	
07074S/300	Soybean Mosaic Virus set / 300	300 tests	
07074S/500	Soybean Mosaic Virus set / 500	500 tests	
07074C/096	Soybean Mosaic Virus complete kit / 96	96 tests	
07074C/480	Soybean Mosaic Virus complete kit / 480	480 tests	
07074PC	Positive Control Soybean Mosaic Virus	1 vial (10 tests)	
07074NC	Negative Control Soybean Mosaic Virus	1 vial (10 tests)	
07089	Squash Mosaic Comovirus. SqMV	Size	
	Host range: Cucurbitaceae.	DAS ELISA	
	Transmission by beetles and mechanical inoculation.		
07089S/100	Squash Mosaic Virus set / 100	100 tests	
07089S/300	Squash Mosaic Virus set / 300	300 tests	
07089S/500	Squash Mosaic Virus set / 500	500 tests	
07089C/096	Squash Mosaic Virus complete kit / 480	96 tests	
07089C/480	Squash Mosaic Virus complete kit / 960	480 tests	
07089PC	Positive Control Squash Mosaic Virus	1 vial (10 tests)	
07089NC	Negative Control Squash Mosaic Virus	1 vial (10 tests)	
07115	Strawberry Latent Ringspot Nepovirus (chestnut isolate). SLRV	Size	
	Host range: many species.	DAS ELISA	
	Transmission by mechanical inoculation, nematodes and seeds.		
07115S/100	Strawberry Latent Virus set / 100	100 tests	
07115S/300	Strawberry Latent Virus set / 300	300 tests	
07115S/500	Strawberry Latent Virus set / 500	500 tests	
07115S/1000	Strawberry Latent Virus set / 1000	1000 tests	
07115C/096	Strawberry Latent Virus complete kit / 96	96 tests	
07115C/480	Strawberry Latent Virus complete kit / 480	480 tests	
07115C/960	Strawberry Latent Virus complete kit / 960	960 tests	
07115PC	Positive Control Strawberry Latent Virus inactivated	1 vial (10 tests)	
07210PC	ELISA Method Control GAR unspecific	1 vial (10 tests)	
07115NC	Negative Control Strawberry Latent Virus	1 vial (10 tests)	

Product Section

07088	Sugarcane Mosaic Potyvirus (MDMV B). SCMV	Size	
	Host range: maize, Sorghum spp., Sugarcane.	DAS ELISA	
	Transmission by aphids, grafting, mechanical inoculation, seed		
07088S/100	Sugarcane Mosaic Virus set / 100	100 tests	
07088S/300	Sugarcane Mosaic Virus set / 300	300 tests	
07088S/500	Sugarcane Mosaic Virus set / 500	500 tests	
07088S/1000	Sugarcane Mosaic Virus set / 1000	1000 tests	
07088C/096	Sugarcane Mosaic Virus complete kit / 96	96 tests	
07088C/480	Sugarcane Mosaic Virus complete kit / 480	480 tests	
07088C/960	Sugarcane Mosaic Virus complete kit / 960	960 tests	
07088PC	Positive Control Sugarcane Mosaic Virus	1 vial (10 tests)	
07088NC	Negative Control Sugarcane Mosaic Virus	1 vial (10 tests)	
07176	Tobacco Mild Green Mosaic Tobamovirus (TMV strain U2). TMGMV	Size	
	Host range: pepper, petunia, tomato.	DAS ELISA	
	Transmission by grafting and mechanical inoculation without vector		
07176S/ 100	Tobacco Mild Green Mosaic Virus set / 100	100 tests	
07176S/ 300	Tobacco Mild Green Mosaic Virus set / 300	300 tests	
07176S/500	Tobacco Mild Green Mosaic Virus set / 500	500 tests	
07176S/1000	Tobacco Mild Green Mosaic Virus set / 1000	1000 tests	
07176S/5000	Tobacco Mild Green Mosaic Virus set / 5000	5000 tests	
07176C/096	Tobacco Mild Green Mosaic Virus complete kit / 96	96 tests	
07176C/480	Tobacco Mild Green Mosaic Virus complete kit / 480	480 tests	
07176C/960	Tobacco Mild Green Mosaic Virus complete kit / 960	960 tests	
07176C/4800	Tobacco Mild Green Mosaic Virus complete kit / 4800	4800 tests	
07176PC	Positive Control Tobacco Mild Green Mosaic Virus	1 vial (10 tests)	
07176NC	Negative Control Tobacco Mild Green Mosaic Virus	1 vial (10 tests)	
07042	Tobacco Mosaic Tobamovirus (TMV strain U1). TMV	Size	
	Host range: many species.	DAS ELISA	
	Transmission by contact, grafting, mechanical inoculation, seed, no vector		
07042S/100	Tobacco Mosaic Virus set / 100	100 tests	
07042S/300	Tobacco Mosaic Virus set / 300	300 tests	
07042S/500	Tobacco Mosaic Virus set / 500	500 tests	
07042S/1000	Tobacco Mosaic Virus set / 1000	1000 tests	
07042S/5000	Tobacco Mosaic Virus set / 5000	5000 tests	
07042C/096	Tobacco Mosaic Virus complete kit / 96	96 tests	
07042C/480	Tobacco Mosaic Virus complete kit / 480	480 tests	
07042C/960	Tobacco Mosaic Virus complete kit / 960	960 tests	
07042C/4800	Tobacco Mosaic Virus complete kit / 4800	4800 tests	
07042PC	Positive Control Tobacco Mosaic Virus	1 vial (10 tests)	
07042NC	Negative Control Tobacco Mosaic Virus	1 vial (10 tests)	

Product Section

07036	Tobacco Necrosis Necrovirus Broad Range (artificial mixture). TNV	Size	
	Host range: many species.	DAS ELISA	
	Transmission by Olpidium brassicae and by mechanical inoculation		
07036S/100	Tobacco Necrosis Virus set / 100	100 tests	
07036S/300	Tobacco Necrosis Virus set / 300	300 tests	
07036S/500	Tobacco Necrosis Virus set / 500	500 tests	
07036S/1000	Tobacco Necrosis Virus set / 1000	1000 tests	
07036C/96	Tobacco Necrosis Virus complete kit / 96	96 tests	
07036C/480	Tobacco Necrosis Virus complete kit / 480	480 tests	
07036C/960	Tobacco Necrosis Virus complete kit / 960	960 tests	
07046PC	Positive Control Tobacco Necrosis Virus A	1 vial (10 tests)	
07036NC	Negative Control Tobacco Necrosis Virus	1 vial (10 tests)	
07046	Tobacco Necrosis Necrovirus A. TNV A	Size	
		DAS ELISA	
07046S/100	Tobacco Necrosis Virus A set / 100	100 tests	
07046S/300	Tobacco Necrosis Virus A set / 300	300 tests	
07046S/500	Tobacco Necrosis Virus A set / 500	500 tests	
07046C/96	Tobacco Necrosis Virus A complete kit /96	96 tests	
07046C/480	Tobacco Necrosis Virus A complete kit / 480	480 tests	
07046PC	Positive Control Tobacco Necrosis Virus A	1 vial (10 tests)	
07046NC	Negative Control Tobacco Necrosis Virus A	1 vial (10 tests)	
07035	Tobacco Necrosis Necrovirus (cherry isolate). TNV ch	Size	
		DAS ELISA	
07035S/100	Tobacco Necrosis Virus ch set / 100	100 tests	
07035S/300	Tobacco Necrosis Virus ch set / 300	300 tests	
07035S/500	Tobacco Necrosis Virus ch set / 500	500 tests	
07035C/96	Tobacco Necrosis Virus ch complete kit / 96	96 tests	
07035C/480	Tobacco Necrosis Virus ch complete kit / 480	480 tests	
07035PC	Positive Control Tobacco Necrosis Virus ch	1 vial (10 tests)	
07035NC	Negative Control Tobacco Necrosis Virus ch	1 vial (10 tests)	
07043	Tobacco Necrosis Necrovirus E. TNV E	Size	
		DAS ELISA	
07043S/100	Tobacco Necrosis Virus E set / 100	100 tests	
07043S/300	Tobacco Necrosis Virus E set / 300	300 tests	
07043S/500	Tobacco Necrosis Virus E set / 500	500 tests	
07043C/96	Tobacco Necrosis Virus E complete kit / 96	96 tests	
07043C/480	Tobacco Necrosis Virus E complete kit / 480	480 tests	
07043PC	Positive Control Tobacco Necrosis Virus E	1 vial (10 tests)	
07043NC	Negative Control Tobacco Necrosis Virus E	1 vial (10 tests)	

Product Section

07152	Tobacco Rattle Tobravirus Broad Range. TRV	Size	
	Artificial mixture of antisera. Host range: many species.	DAS ELISA	
	Transmission by grafting, mechanical inoculation, nematodes, seed.		
07152S/100	Tobacco Rattle Virus set / 100	100 tests	
07152S/300	Tobacco Rattle Virus set / 300	300 tests	
07152S/500	Tobacco Rattle Virus set / 500	500 tests	
07152S/1000	Tobacco Rattle Virus set / 1000	1000 tests	
07152C/096	Tobacco Rattle Virus complete kit / 96	96 tests	
07152C/480	Tobacco Rattle Virus complete kit / 480	480 tests	
07152C/960	Tobacco Rattle Virus complete kit / 960	960 tests	
07152PC	Positive Control Tobacco Rattle Virus	1 vial (10 tests)	
07152NC	Negative Control Tobacco Rattle Virus	1 vial (10 tests)	
07116	Tobacco Rattle Tobravirus (Jeffersonia Isolate). TRV J	Size	
		DAS ELISA	
07116S/100	Tobacco Rattle Virus J set / 100	100 tests	
07116S/300	Tobacco Rattle Virus J set / 300	300 tests	
07116S/500	Tobacco Rattle Virus J set / 500	500 tests	
07116C/096	Tobacco Rattle Virus J complete kit / 96	96 tests	
07116C/480	Tobacco Rattle Virus J complete kit / 480	480 tests	
07116PC	Positive Control Tobacco Rattle Virus J	1 vial (10 tests)	
07116NC	Negative Control Tobacco Rattle Virus J	1 vial (10 tests)	
07044	Tobacco Rattle Tobravirus K. TRV K	Size	
		DAS ELISA	
07044S/100	Tobacco Rattle Virus K set / 100	100 tests	
07044S/300	Tobacco Rattle Virus K set / 300	300 tests	
07044S/500	Tobacco Rattle Virus K set / 500	500 tests	
07044C/096	Tobacco Rattle Virus K complete kit / 96	96 tests	
07044C/480	Tobacco Rattle Virus K complete kit / 480	480 tests	
07044PC	Positive Control Tobacco Rattle Virus K	1 vial (10 tests)	
07044NC	Negative Control Tobacco Rattle Virus K	1 vial (10 tests)	
07113	Tobacco Rattle Tobravirus M. TRV M	Size	
		DAS ELISA	
07113S/100	Tobacco Rattle Virus M set / 100	100 tests	
07113S/300	Tobacco Rattle Virus M set / 300	300 tests	
07113S/500	Tobacco Rattle Virus M set / 500	500 tests	
07113C/096	Tobacco Rattle Virus M complete kit / 96	96 tests	
07113C/480	Tobacco Rattle Virus M complete kit / 480	480 tests	
07113PC	Positive Control Tobacco Rattle Virus M	1 vial (10 tests)	
07113NC	Negative Control Tobacco Rattle Virus M	1 vial (10 tests)	

Product Section

07168	Tobacco Ringspot Nepovirus. TRSV	Size	
	Host range: cucumber, soybean, tomato.	DAS ELISA	
	Transmission by mechanical inoculation, nematodes, other vectors, seed.		
07168S/100	Tobacco Ringspot Virus set / 100	100 tests	
07168S/300	Tobacco Ringspot Virus set / 300	300 tests	
07168S/500	Tobacco Ringspot Virus set / 500	500 tests	
07168S/1000	Tobacco Ringspot Virus set / 1000	1000 tests	
07168C/096	Tobacco Ringspot Virus complete kit / 96	96 tests	
07168C/480	Tobacco Ringspot Virus complete kit / 480	480 tests	
07168C/960	Tobacco Ringspot Virus complete kit / 960	960 tests	
07168PC	Positive Control TRSV inactivated	1 vial (10 tests)	
07210PC	ELISA Method Control GAR unspecific	1 vial (10 tests)	
07168NC	Negative Control Tobacco Ringspot Virus	1 vial (10 tests)	
07184	Tobamoscreen® I detecting PMMoV, TMV and ToMV	Size	
		DAS ELISA	
07184S/100	Tobamoscreen® I set / 100	100 tests	
07184S/300	Tobamoscreen® I set / 300	300 tests	
07184S/500	Tobamoscreen® I set / 500	500 tests	
07184S/1000	Tobamoscreen® I set / 1000	1000 tests	
07184S/5000	Tobamoscreen® I set / 5000	5000 tests	
07184C/096	Tobamoscreen® I complete kit / 96	96 tests	
07184C/480	Tobamoscreen® I complete kit / 480	480 tests	
07184C/960	Tobamoscreen® I complete kit / 960	960 tests	
07184C/4800	Tobamoscreen® I complete kit / 4800	4800 tests	
07096PC	Positive Control Pepper Mild Mottle Virus	1 vial (10 tests)	
07042PC	Positive Control Tobacco Mosaic Virus	1 vial (10 tests)	
07047PC	Positive Control Tomato Mosaic Virus	1 vial (10 tests)	
07184PC	Positive Control Tobamoscreen®	1 vial (10 tests)	
07184NC	Negative Control Tobamoscreen® I	1 vial (10 tests)	
07045	Tomato Aspermy Cucumovirus. TAV (Chrysanthemum Aspermy Virus)	Size	
	Host range: Chrysanthemum myrtifolium, tomato.	DAS ELISA	
	Transmission by grafting, mechanical inoculation, seed.		
07045S/100	Tomato Aspermy Virus set / 100	100 tests	
07045S/300	Tomato Aspermy Virus set / 300	300 tests	
07045S/500	Tomato Aspermy Virus set / 500	500 tests	
07045C/096	Tomato Aspermy Virus complete kit / 96	96 tests	
07045C/480	Tomato Aspermy Virus complete kit / 480	480 tests	
07045PC	Positive Control Tomato Aspermy Virus	1 vial (10 tests)	
07045NC	Negative Control Tomato Aspermy Virus	1 vial (10 tests)	

Product Section

07062	Tomato Blackring Nepovirus. TBRV	Size	
	Syn.: Potato Bouquet Virus. Host range: many species.	DAS ELISA	
	Transmission by grafting, mechanical inoculation, nematodes and seed.		
07062S/100	Tomato Blackring Virus set / 100	100 tests	
07062S/300	Tomato Blackring Virus set / 300	300 tests	
07062S/500	Tomato Blackring Virus set / 500	500 tests	
07062C/096	Tomato Blackring Virus complete kit / 96	96 tests	
07062C/480	Tomato Blackring Virus complete kit / 480	480 tests	
07062PC	Positive Control Tomato Blackring Virus inactivated	1 vial (10 tests)	
07210PC	ELISA Method Control GAR unspecific	1 vial (10 tests)	
07062NC	Negative Control Tomato Blackring Virus	1 vial (10 tests)	
07067	Tomato Bushy Stunt Tombusvirus. TBSV	Size	
	Host range: solanaceous species, tulips etc.	DAS ELISA	
	Transmission by grafting, mechanical inoculation and seed.		
07067S/100	Tomato Bushy Stunt Virus set /100	100 tests	
07067S/300	Tomato Bushy Stunt Virus set / 300	300 tests	
07067S/500	Tomato Bushy Stunt Virus set / 500	500 tests	
07067S/1000	Tomato Bushy Stunt Virus set / 1000	1000 tests	
07067S/5000	Tomato Bushy Stunt Virus set / 5000	5000 tests	
07067C/096	Tomato Bushy Stunt Virus complete kit / 96	96 tests	
07067C/480	Tomato Bushy Stunt Virus complete kit / 480	480 tests	
07067C/960	Tomato Bushy Stunt Virus complete kit / 960	960 tests	
07067C/4800	Tomato Bushy Stunt Virus complete kit / 4800	4800 tests	
07067PC	Positive Control Tomato Bushy Stunt Virus	1 vial (10 tests)	
07067NC	Negative Control Tomato Bushy Stunt Virus	1 vial (10 tests)	
07101	Tomato Chlorosis Crinivirus. ToCV	Size	
	Host range: Solanaceae and several members of other families.	DAS ELISA	
	Transmission:white flies		
07101S/100	Tomato Chlorosis Virus set / 100	100 tests	
07101S/300	Tomato Chlorosis Virus set / 300	300 tests	
07101S/500	Tomato Chlorosis Virus set / 500	500 tests	
07101C/096	Tomato Chlorosis Virus complete kit / 96	96 tests	
07101C/480	Tomato Chlorosis Virus complete kit / 480	480 tests	
07101PC	Positive Control Tomato Chlorosis Virus	1 vial (10 tests)	
07101NC	Negative Control Tomato Chlorosis Virus	1 vial (10 tests)	
07503	Tomato Chlorotic Spot Tospovirus. TCSV	Size	
	TSWV serogroup (former serogroup II) Host range: lettuce, tomato.	DAS ELISA	
	Transmission by mechanical inoculation and thrips.		
07503S/100	Tomato Chlorotic Spot Virus set / 100	100 tests	
07503S/300	Tomato Chlorotic Spot Virus set / 300	300 tests	
07503S/500	Tomato Chlorotic Spot Virus set / 500	500 tests	
07503S/1000	Tomato Chlorotic Spot Virus set / 1000	1000 tests	
07503C/096	Tomato Chlorotic Spot Virus complete kit / 96	96 tests	
07503C/480	Tomato Chlorotic Spot Virus complete kit / 480	480 tests	
07503C/960	Tomato Chlorotic Spot Virus complete kit / 960	960 tests	
07503PC	Positive Control Tomato Chlorotic Spot Virus	1 vial (10 tests)	
07503NC	Negative Control Tomato Chlorotic Spot Virus	1 vial (10 tests)	

Product Section

07047	Tomato Mosaic Tobamovirus (Dahlemense strain). ToMV	Size	
	Host range: tomato.	DAS ELISA	
	Transmission by contact, mechanical inoculation, seed.		
07047S/100	Tomato Mosaic Virus set / 100	100 tests	
07047S/300	Tomato Mosaic Virus set / 300	300 tests	
07047S/500	Tomato Mosaic Virus set / 500	500 tests	
07047S/1000	Tomato Mosaic Virus set / 1000	1000 tests	
07047S/5000	Tomato Mosaic Virus set / 5000	5000 tests	
07047C/096	Tomato Mosaic Virus complete kit / 96	96 tests	
07047C/480	Tomato Mosaic Virus complete kit / 480	480 tests	
07047C/960	Tomato Mosaic Virus complete kit / 960	960 tests	
07047C/4800	Tomato Mosaic Virus complete kit / 4800	4800 tests	
07047PC	Positive Control Tomato Mosaic Virus	1 vial (10 tests)	
07047NC	Negative Control Tomato Mosaic Virus	1 vial (10 tests)	
07084	Tomato Ringspot Nepovirus (pelargonium isolate). ToRSV	Size	
	Host range: grapevine, pelargonium, pome fruits etc.	DAS ELISA	
	Transmission by grafting, mechanical inoculation, Xiphinemia, seed.		
07084S/100	Tomato Ringspot Virus set / 100	100 tests	
07084S/300	Tomato Ringspot Virus set / 300	300 tests	
07084S/500	Tomato Ringspot Virus set / 500	500 tests	
07084C/096	Tomato Ringspot Virus complete kit / 96	96 tests	
07084C/480	Tomato Ringspot Virus complete kit / 480	480 tests	
07084PC	Positive Control Tomato Ringspot Virus inactivated	1 vial (10 tests)	
07210PC	ELISA Method Control GAR unspecific	1 vial (10 tests)	
07084NC	Negative Control Tomato Ringspot Virus	1 vial (10 tests)	
07501	Tomato Spotted Wilt Tospovirus. TSWV (Former serogroup I)	Size	
	Host range: many species.	DAS ELISA	
	Transmission grafting, mechanical inoculation, thrips		
07501S/100	Tomato Spotted Wilt Virus set / 100	100 tests	
07501S/300	Tomato Spotted Wilt Virus set / 300	300 tests	
07501S/500	Tomato Spotted Wilt Virus set / 500	500 tests	
07501S/1000	Tomato Spotted Wilt Virus set / 1000	1000 tests	
07501C/096	Tomato Spotted Wilt Virus complete kit / 96	96 tests	
07501C/480	Tomato Spotted Wilt Virus complete kit / 480	480 tests	
07501C/960	Tomato Spotted Wilt Virus complete kit / 960	960 tests	
07501PC	Positive Control Tomato Spotted Wilt Virus inactivated	1 vial (10 tests)	
07210PC	ELISA Method Control GAR unspecific	1 vial (10 tests)	
07501NC	Negative Control Tomato Spotted Wilt Virus	1 vial (10 tests)	
07506	TSWV/INSV (artificial mixture of antisera) - replaced by 07510 Tosposcreen	see page 49	

Product Section

07177	Tomato Yellow Leafcurl Bigeminivirus polyclonal/monoclonal. TYLCV	Size	
	Reaction with ACMV -, BGMV -,TYLCV - and TYLCSV isolates	TAS ELISA	
	Host range: tomato. Transmission by Bemisia tabacchi.		
07177S/ 100	Tomato Yellow Leafcurl Virus set	100 tests	
07177S/ 300	Tomato Yellow Leafcurl Virus set / 300	300 tests	
07177S/500	Tomato Yellow Leafcurl Virus set / 500	500 tests	
07177C/096	Tomato Yellow Leafcurl Virus complete kit / 96	96 tests	
07177C/480	Tomato Yellow Leafcurl Virus complete kit / 480	480 tests	
07212PC	ELISA Method Control GAR unpecific	1 vial (10 tests)	
07177NC	Negative Control Tomato Yellow Leafcurl Virus	1 vial (10 tests)	
07510	TospoSCREEN detects TWSV, INSV, TCSV, GRSV, and CSNV	Size	
		DAS ELISA	
07510/100	TospoSCREEN set / 100	100 tests	
07510/300	TospoSCREEN set / 300	300 tests	
07510S/500	TospoSCREEN set / 500	500 tests	
07510S/1000	TospoSCREEN set 1000	1000 tests	
07510S/5000	TospoSCREEN set / 5000	5000 tests	
07510C/096	TospoSCREEN complete kit / 96	96 tests	
07510C/480	TospoSCREEN complete kit / 480	480 tests	
07510C/960	TospoSCREEN complete kit / 960	960 tests	
07510C/4800	TospoSCREEN complete kit /4800	4800 tests	
07510PC	Positive Control TospoSCREEN	1 vial (10 tests)	
07501PC	Positive Control TSWV inactivated	1 vial (10 tests)	
07505PC	Positive Control INSV	1 vial (10 tests)	
07503PC	Positive Control TCSV	1 vial (10 tests)	
07504PC	Positive Control GRSV	1 vial (10 tests)	
07510NC	Negative Control TospoSCREEN	1 vial (10 tests)	
07049	Turnip Mosaic Potyvirus (Cabbage Black Ring Virus). TuMV	Size	
	Host range: Brassicaceae, Solanaceae, others.	DAS ELISA	
	Transmission by aphids and mechanical inoculation.		
07049S/100	Turnip Mosaic Virus set / 100	100 tests	
07049S/300	Turnip Mosaic Virus set / 300	300 tests	
07049S/500	Turnip Mosaic Virus set / 500	500 tests	
07049C/096	Turnip Mosaic Virus complete kit / 96	96 tests	
07049C/480	Turnip Mosaic Virus complete kit / 480	480 tests	
07049PC	Positive Control Turnip Mosaic Virus	1 vial (10 tests)	
07049NC	Negative Control Turnip Mosaic Virus	1 vial (10 tests)	
07091	Turnip Yellow Mosaic Tymovirus. TYMV	Size	
	Host range: Brassicaceae.	DAS ELISA	
	Transmission by flea beetles, grafting, mechanical inoculation, seed.		
07091S/100	Turnip Yellow Mosaic Virus set / 100	100 tests	
07091S/300	Turnip Yellow Mosaic Virus set / 300	300 tests	
07091S/500	Turnip Yellow Mosaic Virus set / 500	500 tests	
07091C/096	Turnip Yellow Mosaic Virus complete kit / 96	96 tests	
07091C/480	Turnip Yellow Mosaic Virus complete kit / 480	480 tests	
07091PC	Positive Control Turnip Yellow Mosaic Virus	1 vial (10 tests)	
07091NC	Negative Control Turnip Yellow Mosaic Virus	1 vial (10 tests)	

Product Section

07009	Turnip Yellowings Polerovirus. TuYV	Size	
	Beet Mild Yellowing Virus.	DAS ELISA	
	Host range: beta spp., others.		
	Transmission by aphids.		
07009S/100	Turnip Yellowings Virus set / 100	100 tests	
07009S/300	Turnip Yellowings Virus set / 300	300 tests	
07009S/500	Turnip Yellowings Virus set / 500	500 tests	
07009C/096	Turnip Yellowings Virus complete kit / 96	96 tests	
07009C/480	Turnip Yellowings Virus complete kit / 480	480 tests	
07210PC	ELISA Method Control GAR unspecific	1 vial (10 tests)	
07009NC	Negative Control Turnip Yellowings Virus	1 vial (10 tests)	
07095	Watermelon Mosaic Potyvirus II. WMV II	Size	
	Host range: Cucurbitaceae.	DAS ELISA	
	Transmission by aphids and mechanical inoculation.		
07095S/100	Watermelon Mosaic Virus II set / 100	100 tests	
07095S/300	Watermelon Mosaic Virus II set / 300	300 tests	
07095S/500	Watermelon Mosaic Virus II set / 500	500 tests	
07095C/096	Watermelon Mosaic Virus II complete kit / 96	96 tests	
07095C/480	Watermelon Mosaic Virus II complete kit / 480	480 tests	
07095PC	Positive Control Watermelon Mosaic Virus II	1 vial (10 tests)	
07095NC	Negative Control Watermelon Mosaic Virus II	1 vial (10 tests)	
07082	Wheat Dwarf Monogeminivirus. WDV	Size	
	Host range: barley, wheat.	DAS ELISA	
	Transmission: cicada (Psammotettix alienus).		
07082S/100	Wheat Dwarf Virus set / 100	100 tests	
07082S/300	Wheat Dwarf Virus set / 300	300 tests	
07082S/500	Wheat Dwarf Virus set / 500	500 tests	
07082S/1000	Wheat Dwarf Virus set / 1000	1000 tests	
07082C/096	Wheat Dwarf Virus complete kit / 96	96 tests	
07082C/480	Wheat Dwarf Virus complete kit / 480	480 tests	
07082C/960	Wheat Dwarf Virus complete kit / 960	960 tests	
07082PC	Positive Control Wheat Dwarf Virus	1 vial (10 tests)	
07082NC	Negative Control Wheat Dwarf Virus	1 vial (10 tests)	
07171	Wheat Spindle Streak Mosaic Bymovirus. WSSMV	Size	
	Polyclonal/monoclonal. Host range: rye, wheat.	TAS ELISA	
	Transmission by Polymyxa graminis and by mechanical inoculation.		
07171S/100	Wheat Spindle Streak Mosaic Virus set / 100	100 tests	
07171S/300	Wheat Spindle Streak Mosaic Virus set / 300	300 tests	
07171S/500	Wheat Spindle Streak Mosaic Virus set / 500	500 tests	
07171C/096	Wheat Spindle Streak Mosaic Virus complete kit / 96	96 tests	
07171C/480	Wheat Spindle Streak Mosaic Virus complete kit / 480	480 tests	
07171PC	Positive Control Wheat Spindle Streak Mosaic Virus	1 vial (10 tests)	
07171NC	Negative Control Wheat Spindle Streak Mosaic Virus	1 vial (10 tests)	

Product Section

07048	Wheat Streak Mosaic Rymovirus. WSMV	Size	
	Host range: maize, wheat, others.	DAS ELISA	
	Transmission by mites, mechanical inoculation, seed at low rate.		
07048S/100	Wheat Streak Mosaic Virus set / 100	100 tests	
07048S/300	Wheat Streak Mosaic Virus set / 300	300 tests	
07048S/500	Wheat Streak Mosaic Virus set / 500	500 tests	
07048C/096	Wheat Streak Mosaic Virus complete kit / 96	96 tests	
07048C/480	Wheat Streak Mosaic Virus complete kit / 480	480 tests	
07048PC	Positive Control Wheat Streak Mosaic Virus	1 vial (10 tests)	
07048NC	Negative Control Wheat Streak Mosaic Virus	1 vial (10 tests)	
07167	Zucchini Green Mottle Mosaic Tobamovirus. ZGMMV	Size	
	Host range: Cucurbitaceae. Transmission by direct contact very likely.	DAS ELISA	
07167S/100	Zucchini Green Mottle Mosaic Virus set / 100	100 tests	
07167S/300	Zucchini Green Mottle Mosaic Virus set / 300	300 tests	
07167S/500	Zucchini Green Mottle Mosaic Virus set / 500	500 tests	
07167S/1000	Zucchini Green Mottle Mosaic Virus set / 1000	1000 tests	
07167C/096	Zucchini Green Mottle Mosaic Virus complete kit / 96	96 tests	
07167C/480	Zucchini Green Mottle Mosaic Virus complete kit / 480	480 tests	
07167C/960	Zucchini Green Mottle Mosaic Virus complete kit / 960	960 tests	
07210PC	ELISA Method Control GAR unpecific	1 vial (10 tests)	
07167NC	Negative Control Zucchini Green Mottle Mosaic Virus	1 vial (10 tests)	
07104	Zucchini Yellow Fleck Virus. ZYFV	Size	
	Potyvirus. Host range: Cucurbitaceae.	DAS ELISA	
	Transmission by aphids, contact between plants, mechanical inoculation.		
07104S/100	Zucchini Yellow Fleck Virus set / 100	100 tests	
07104S/300	Zucchini Yellow Fleck Virus set / 300	300 tests	
07104S/500	Zucchini Yellow Fleck Virus set / 500	500 tests	
07104C/096	Zucchini Yellow Fleck Virus complete kit / 96	96 tests	
07104C/480	Zucchini Yellow Fleck Virus complete kit / 480	480 tests	
07104PC	Positive Control Zucchini Yellow Fleck Virus	1 vial (10 tests)	
07104NC	Negative Control Zucchini Yellow Fleck Virus	1 vial (10 tests)	
07090	Zucchini Yellow Mosaic Virus. ZYMV	Size	
	Potyvirus. Host range: Cucurbitaceae.	DAS ELISA	
	Transmission by aphids and mechanical inoculation.		
07090S/100	Zucchini Yellow Mosaic Virus set / 100	100 tests	
07090S/300	Zucchini Yellow Mosaic Virus set / 300	300 tests	
07090S/500	Zucchini Yellow Mosaic Virus set / 500	500 tests	
07090S/1000	Zucchini Yellow Mosaic Virus set / 1000	1000 tests	
07090S/5000	Zucchini Yellow Mosaic Virus set / 5000	5000 tests	
07090C/096	Zucchini Yellow Mosaic Virus complete kit / 96	96 tests	
07090C/480	Zucchini Yellow Mosaic Virus complete kit / 480	480 tests	
07090C/960	Zucchini Yellow Mosaic Virus complete kit / 960	960 tests	
07090C/4800	Zucchini Yellow Mosaic Virus complete kit / 4800	4800 tests	
07090PC	Positive Control Zucchini Yellow Mosaic Virus	1 vial (10 tests)	
07090NC	Negative Control Zucchini Yellow Mosaic Virus	1 vial (10 tests)	

Product Section

ELISA Products - Bacteria			
07154	Acidovorax avenae subsp. citrulli	Size	
	Bacterial fruit blotch.	DAS ELISA	
	Host range: cucurbits.		
	Recommended in EPPO Diagnostic Standard PM 7/127 (1)		
07154S/100	A. avenae subsp. citrulli set / 100	100 tests	
07154S/300	A. avenae subsp. citrulli set / 300	300 tests	
07154S/500	A. avenae subsp. citrulli set / 500	500 tests	
07154S/1000	A. avenae subsp. citrulli set / 1000	1000 tests	
07154C/096	A. avenae subsp. citrulli complete kit / 96	96 tests	
07154C/480	A. avenae subsp. citrulli complete kit / 480	480 tests	
07154C/960	A. avenae subsp. citrulli complete kit / 960	960 tests	
07154PC	Positive Control A. avenae subsp. citrulli inactivated	1 vial (10 tests)	
07210PC	ELISA Method Control GAR	1 vial (10 tests)	
07154NC	Negative Control A. avenae subsp. citrulli	1 vial (10 tests)	
07063	Clavibacter michiganensis subsp. michiganensis	Size	
	Bacterial cancer.	DAS ELISA	
	Host range: tomatoes, some solanaceous weeds.		
07063S/100	C. m. subsp. michiganensis set / 100	100 tests	
07063S/300	C. m. subsp. michiganensis set / 300	300 tests	
07063S/500	C. m. subsp. michiganensis set / 500	500 tests	
07063S/1000	C. m. subsp. michiganensis set / 1000	1000 tests	
07063C/096	C. m. subsp. michiganensis complete kit	96 tests	
07063C/480	C. m. subsp. michiganensis complete kit	480 tests	
07063C/960	C. m. subsp. michiganensis complete kit / 960	960 tests	
07063PC	Positive Control C. m. subsp. michiganensis inactivated	1 vial (10 tests)	
07208PC	ELISA Method Control RAG unspesific	1 vial (10 tests)	
07063NC	Negative Control C. m. subsp. michiganensis	1 vial (10 tests)	
07064	Clavibacter michiganensis subsp. sepedonicus	Size	
	Bacterial ring rot.	DAS ELISA	
	Host range: potatoes, other solanaceous plants.		
07064S/100	C. m. subsp. sepedonicus set / 100	100 tests	
07064S/300	C. m. subsp. sepedonicus set / 300	300 tests	
07064S/500	C. m. subsp. sepedonicus set / 500	500 tests	
07064S/1000	C. m. subsp. sepedonicus set / 1000	1000 tests	
07064C/096	C. m. subsp. sepedonicus complete kit / 96	96 tests	
07064C/480	C. m. subsp. sepedonicus complete kit / 480	480 tests	
07064C/960	C. m. subsp. sepedonicus complete kit / 960	960 tests	
07208PC	ELISA Method Control RAG unspesific	1 vial (10 tests)	
07064NC	Negative Control C. m. subsp. sepedonicus	1 vial (10 tests)	

Product Section

07146	Dickeya chrysanthemi Saintpaulia Isolate	Size	
	Positive reaction with Dickeya solani. Bacterial soft rot.	DAS ELISA	
	Host range: Chrysanthemum, carrot, chicory, tomato, potato and others.		
07146S/100	Dickeya chrysanthemi set / 100	100 tests	
07146S/300	Dickeya chrysanthemi set / 300	300 tests	
07146S/500	Dickeya chrysanthemi set / 500	500 tests	
07146S/1000	Dickeya chrysanthemi set / 1000	1000 tests	
07146C/096	Dickeya chrysanthemi complete kit / 960	96 tests	
07146C/480	Dickeya chrysanthemi complete kit / 480	480 tests	
07146C/960	Dickeya chrysanthemi complete kit / 960	960 tests	
07146PC	Positive Control Dickeya chrysanthemi inactivated	1 vial (10 tests)	
07210PC	ELISA Method Control GAR unspecific	1 vial (10 tests)	
07146NC	Negative Control Dickeya chrysanthemi	1 vial (10 tests)	
07069	Erwinia amylovora	Size	
	Feuerbrand. Fire blight. Host range: Rosaceae.	DAS ELISA	
	Recommended in EPPO Diagnostic Standard PM 7/20 (2)		
07069S/100	Erwinia amylovora set / 100	100 tests	
07069S/300	Erwinia amylovora set / 300	300 tests	
07069S/500	Erwinia amylovora set / 500	500 tests	
07069S/1000	Erwinia amylovora set / 1000	1000 tests	
07069C/096	Erwinia amylovora complete kit / 96	96 tests	
07069C/480	Erwinia amylovora complete kit / 480	480 tests	
07069C/960	Erwinia amylovora complete kit / 960	960 tests	
07069PC	Positive Control Erwinia amylovora inactivated	1 vial (10 tests)	
07210PC	ELISA Method Control GAR unspecific	1 vial (10 tests)	
07069NC	Negative Control Erwinia amylovora	1 vial (10 tests)	
07129	Pantoea stewartii subsp. stewartii	Size	
	Stewarts disease. Host range: mainly important for maize.	DAS ELISA	
07129S/100	Pantoea stewartii subsp. stewartii set / 100	100 tests	
07129S/300	Pantoea stewartii subsp. stewartii set / 300	300 tests	
07129S/500	Pantoea stewartii subsp. stewartii set / 500	500 tests	
07129S/1000	Pantoea stewartii subsp. stewartii set / 1000	1000 tests	
07129C/096	Pantoea stewartii subsp. stewartii complete kit / 96	96 tests	
07129C/480	Pantoea stewartii subsp. stewartii complete kit / 480	480 tests	
07129C/960	Pantoea stewartii subsp. stewartii complete kit / 960	960 tests	
07129PC	Positive Control Pantoea stewartii subsp. stewartii inactivated	1 vial (10 tests)	
07210PC	ELISA Method Control GAR unspecific	1 vial (10 tests)	
07129NC	Negative Control Pantoea stewartii subsp. stewartii	1 vial (10 tests)	
07068	Pectobacterium atrosepticum potato isolate	Size	
	Blackleg disease, soft rot disease. Host range mainly potatoes.	DAS ELISA	
07068S/100	Pectobacterium atrosepticum set / 100	100 tests	
07068S/300	Pectobacterium atrosepticum set / 300	300 tests	
07068S/500	Pectobacterium atrosepticum set / 500	500 tests	
07068S/1000	Pectobacterium atrosepticum set / 1000	1000 tests	
07068C/096	Pectobacterium atrosepticum complete kit / 96	96 tests	
07068C/480	Pectobacterium atrosepticum complete kit / 480	480 tests	
07068C/960	Pectobacterium atrosepticum complete kit / 960	960 tests	
	continued on next page		

Product Section

07068PC	Positive Control Pectobacterium atrosepticum inactivated	1 vial (10 tests)	
07210PC	ELISA Method Control GAR unspecific	1 vial (10 tests)	
07068NC	Negative Control Pectobacterium atrosepticum	1 vial (10 tests)	
07070	Pseudomonas savastanoi pv. phaseolicola	Size	
	Halo blight of beans.	DAS ELISA	
	Host range: beans.		
07070S/100	Pseudomonas savastanoi pv. phaseolicola set / 100	100 tests	
07070S/300	Pseudomonas savastanoi pv. phaseolicola set / 300	300 tests	
07070S/500	Pseudomonas savastanoi pv. phaseolicola set / 500	500 tests	
07070S/1000	Pseudomonas savastanoi pv. phaseolicola set / 1000	1000 tests	
07070C/096	Pseudomonas savastanoi pv. phaseolicola complete kit / 96	96 tests	
07070C/480	Pseudomonas savastanoi pv. phaseolicola complete kit / 480	480 tests	
07070C/960	Pseudomonas savastanoi pv. phaseolicola complete kit / 960	960 tests	
07070PC	Positive Control Pseudomonas savastanoi pv. phaseolicola inactivated	1 vial (10 tests)	
07210PC	ELISA Method Control GAR unspecific	1 vial (10 tests)	
07070NC	Negative Control Pseudomonas savastanoi pv. phaseolicola	1 vial (10 tests)	
07147	Pseudomonas syringae pv. lachrymans	Size	
	Angular leaf disease, Eckige Blattfleckenkrankheit.	DAS ELISA	
	Host range: cucurbits.		
07147S/100	Pseudomonas syringae pv. lachrymans set / 100	100 tests	
07147S/300	Pseudomonas syringae pv. lachrymans set / 300	300 tests	
07147S/500	Pseudomonas syringae pv. lachrymans set / 500	500 tests	
07147S/1000	Pseudomonas syringae pv. lachrymans set / 1000	1000 tests	
07147C/096	Pseudomonas syringae pv. lachrymans complete kit / 96	96 tests	
07147C/480	Pseudomonas syringae pv. lachrymans complete kit / 480	480 tests	
07147C/960	Pseudomonas syringae pv. lachrymans complete kit / 960	960 tests	
07147PC	Positive Control Pseudomonas syringae pv. lachrymans inactivated	1 vial (10 tests)	
07210PC	ELISA Method Control GAR unspecific	1 vial (10 tests)	
07147NC	Negative Control Pseudomonas syringae pv. lachrymans	1 vial (10 tests)	
07071	Pseudomonas syringae pv. pisi	Size	
	Bacterial blight of peas.	DAS ELISA	
	Host range: peas.		
07071S/100	Pseudomonas syringae pv. pisi set / 100	100 tests	
07071S/300	Pseudomonas syringae pv. pisi set / 300	300 tests	
07071S/500	Pseudomonas syringae pv. pisi set / 500	500 tests	
07071S/1000	Pseudomonas syringae pv. pisi set / 1000	1000 tests	
07071C/096	Pseudomonas syringae pv. pisi complete kit / 96	96 tests	
07071C/480	Pseudomonas syringae pv. pisi complete kit / 480	480 tests	
07071C/960	Pseudomonas syringae pv. pisi complete kit / 960	960 tests	
07210PC	ELISA Method Control GAR unspecific	1 vial (10 tests)	
07071PC	Positive Control Pseudomonas syringae pv. pisi inactivated	1 vial (10 tests)	
07071NC	Negative Control Pseudomonas syringae pv. pisi	1 vial (10 tests)	

Product Section

07139	Pseudomonas syringae pv. tomato	Size	
	Bacterial speck disease of tomato. Host range: tomatoes.	DAS ELISA	
07139S/100	Pseudomonas syringae pv. tomato set / 100	100 tests	
07139S/300	Pseudomonas syringae pv. tomato set / 300	300 tests	
07139S/500	Pseudomonas syringae pv. tomato set / 500	500 tests	
07139S/1000	Pseudomonas syringae pv. tomato set / 1000	1000 tests	
07139C/096	Pseudomonas syringae pv. tomato complete kit / 96	96 tests	
07139C/480	Pseudomonas syringae pv. tomato complete kit / 480	480 tests	
07139C/960	Pseudomonas syringae pv. tomato complete kit / 960	960 tests	
07139PC	Positive Control Pseudomonas syringae pv. tomato inactivated	1 vial (10 tests)	
07210PC	ELISA Method Control GAR unspecific	1 vial (10 tests)	
07139NC	Negative Control Pseudomonas syringae pv. tomato	1 vial (10 tests)	
07056	Ralstonia solanacearum	Size	
	Pseudomonas solanacearum. Braunfäule. Brown rot (potato), Southern Bacterial Wilt (tomato). Moko Disease (banana). Wide host range.	DAS ELISA	
07056S/100	Ralstonia solanacearum set / 100	100 tests	
07056S/300	Ralstonia solanacearum set / 300	300 tests	
07056S/500	Ralstonia solanacearum set / 500	500 tests	
07056S/1000	Ralstonia solanacearum set / 1000	1000 tests	
07056C/096	Ralstonia solanacearum complete kit / 96	96 tests	
07056C/480	Ralstonia solanacearum complete kit / 480	480 tests	
07056C/960	Ralstonia solanacearum complete kit / 960	960 tests	
07208PC	ELISA Method Control RAG unspecific	1 vial (10 tests)	
07056NC	Negative Control Ralstonia solanacearum	1 vial (10 tests)	
07170	Rhodococcus fascians	Size	
	Corynebacterium fascians. Wide host range, important for ornamentals	DAS ELISA	
07170S/100	Rhodococcus fascians set / 100	100 tests	
07170S/300	Rhodococcus fascians set / 300	300 tests	
07170S/500	Rhodococcus fascians set / 500	500 tests	
07170S/1000	Rhodococcus fascians set / 1000	1000 tests	
07170C/096	Rhodococcus fascians complete kit / 96	96 tests	
07170C/480	Rhodococcus fascians complete kit / 480	480 tests	
07170C/960	Rhodococcus fascians complete kit / 960	960 tests	
07170PC	Positive Control Rhodococcus fascians inactivated	1 vial (10 tests)	
07210PC	ELISA Method Control GAR unspecific	1 vial (10 tests)	
07170NC	Negative Control Rhodococcus fascians	1 vial (10 tests)	
07178	Xanthomonas arboricola pv. corylina	Size	
	Bacterial blight of hazelnut. Host range: hazelnut.	DAS ELISA	
07178S/100	Xanthomonas arboricola pv. corylina set / 100	100 tests	
07178S/300	Xanthomonas arboricola pv. corylina set / 300	300 tests	
07178S/500	Xanthomonas arboricola pv. corylina set / 500	500 tests	
07178S/1000	Xanthomonas arboricola pv. corylina set / 1000	1000 tests	
07178C/96	Xanthomonas arboricola pv. corylina complete kit / 96	96 tests	
07178C/480	Xanthomonas arboricola pv. corylina complete kit / 480	480 tests	
07178C/960	Xanthomonas arboricola pv. corylina complete kit / 960	960 tests	
07178PC	Positive Control Xanthomonas arboricola pv. corylina inactivated	1 vial (10 tests)	
07210PC	ELISA Method Control GAR unspecific	1 vial (10 tests)	
07178NC	Negative Control Xanthomonas arboricola pv. corylina	1 vial (10 tests)	

Product Section

07125	Xanthomonas axonopodis pv. begoniae	Size	
	Bacterial Leaf and Spot Blight. Ölfleckenkrankheit. Host range: Begoniae.	DAS ELISA	
07125S/100	Xanthomonas axonopodis pv. begoniae set / 100	100 tests	
07125S/300	Xanthomonas axonopodis pv. begoniae set / 300	300 tests	
07125S/500	Xanthomonas axonopodis pv. begoniae set / 500	500 tests	
07125S/1000	Xanthomonas axonopodis pv. begoniae set / 1000	1000 tests	
07125C/096	Xanthomonas axonopodis pv. begoniae complete kit / 96	96 tests	
07125C/480	Xanthomonas axonopodis pv. begoniae complete kit / 480	480 tests	
07125C/960	Xanthomonas axonopodis pv. begoniae complete kit / 960	960 tests	
07125PC	Positive Control Xanthomonas axonopodis pv. begoniae inactivated	1 vial (10 tests)	
07210PC	ELISA Method Control GAR unspecific	1 vial (10 tests)	
07125NC	Negative Control Xanthomonas axonopodis pv. begoniae	1 vial (10 tests)	
07161	Xanthomonas axonopodis pv. phaseoli	Size	
	Bakterieller Bohnenbrand, Common Blight, Fettfleckenkrankheit	DAS ELISA	
	Host range: beans and some other legumes.		
07161S/100	Xanthomonas axonopodis pv. phaseoli set / 100	100 tests	
07161S/300	Xanthomonas axonopodis pv. phaseoli set / 300	300 tests	
07161S/500	Xanthomonas axonopodis pv. phaseoli set / 500	500 tests	
07161S/1000	Xanthomonas axonopodis pv. phaseoli set / 1000	1000 tests	
07161C/096	Xanthomonas axonopodis pv. phaseoli complete kit / 96	96 tests	
07161C/480	Xanthomonas axonopodis pv. phaseoli complete kit / 480	480 tests	
07161C/960	Xanthomonas axonopodis pv. phaseoli complete kit / 960	960 tests	
07161PC	Positive Control Xanthomonas axonopodis pv. phaseoli inactivated	1 vial (10 tests)	
07210PC	ELISA Method Control GAR unspecific	1 vial (10 tests)	
07161NC	Negative Control Xanthomonas axonopodis pv. phaseoli	1 vial (10 tests)	
07122	Xanthomonas campestris pv. campestris	Size	
	Black Rot Disease, Blight, Leafspot of Crucifers. Host range: Brassicaceae	DAS ELISA	
07122S/100	Xanthomonas campestris pv. campestris set / 100	100 tests	
07122S/300	Xanthomonas campestris pv. campestris set / 300	300 tests	
07122S/500	Xanthomonas campestris pv. campestris set / 500	500 tests	
07122S/1000	Xanthomonas campestris pv. campestris set / 1000	1000 tests	
07122C/096	Xanthomonas campestris pv. campestris complete kit / 96	96 tests	
07122C/480	Xanthomonas campestris pv. campestris complete kit / 480	480 tests	
07122C/960	Xanthomonas campestris pv. campestris complete kit / 960	960 tests	
07122PC	Positive Control Xanthomonas campestris pv. campestris inactivated	1 vial (10 tests)	
07210PC	ELISA Method Control GAR unspecific	1 vial (10 tests)	
07122NC	Negative Control Xanthomonas campestris pv. campestris	1 vial (10 tests)	
07124	Xanthomonas campestris Lobelia isolate	Size	
	Host range: Lobelia.	DAS ELISA	
07124S/100	Xanthomonas campestris Lobelia isolate set / 100	100 tests	
07124S/300	Xanthomonas campestris Lobelia isolate set / 300	300 tests	
07124S/500	Xanthomonas campestris Lobelia isolate set / 500	500 tests	
07124S/1000	Xanthomonas campestris Lobelia isolate set /1000	1000 tests	
07124C/096	Xanthomonas campestris Lobelia isolate complete kit / 96	96 tests	
07124C/480	Xanthomonas campestris Lobelia isolate complete kit / 480	480 tests	
07124C/960	Xanthomonas campestris Lobelia isolate complete kit / 960	960 tests	
	continued on next page		

Product Section

07124PC	Positive Control Xanthomonas campestris Lobelia isolate inactivated	1 vial (10 tests)	
07210PC	ELISA Method Control GAR unspecific	1 vial (10 tests)	
07124NC	Negative Control Xanthomonas campestris Lobelia isolate	1 vial (10 tests)	
07130	Xanthomonas campestris pv. oryzae see X. oryzae pv. oryzae		
07131	Xanthomonas campestris pv. vesicatoria	Size	
	Blackspot Disease of tomatoes. Host range: various Solanaceae.	DAS ELISA	
07131S/100	Xanthomonas campestris pv. vesicatoria set / 1000	100 tests	
07131S/300	Xanthomonas campestris pv. vesicatoria set / 300	300 tests	
07131S/500	Xanthomonas campestris pv. vesicatoria set / 500	500 tests	
07131S1000	Xanthomonas campestris pv. vesicatoria set / 1000	1000 tests	
07131C/096	Xanthomonas campestris pv. vesicatoria complete kit / 96	96 tests	
07131C/480	Xanthomonas campestris pv. vesicatoria complete kit /480	480 tests	
07131C/960	Xanthomonas campestris pv. vesicatoria complete kit /960	960 tests	
07131PC	Positive Control Xanthomonas campestris pv. vesicatoria inactivated	1 vial (10 tests)	
07210PC	ELISA Method Control GAR unspecific	1 vial (10 tests)	
07131NC	Negative Control Xanthomonas campestris pv. vesicatoria	1 vial (10 tests)	
07102	Xanthomonas citri subsp. citri	Size	
	Bacterial canker of citrus	DAS ELISA	
07102S/100	Xanthomonas citri subsp. citri set / 100	100 tests	
07102S/300	Xanthomonas citri subsp. citri set / 300	300 tests	
07102S/500	Xanthomonas citri subsp. citri set / 500	500 tests	
07102S/1000	Xanthomonas citri subsp. citri set / 1000	1000 tests	
07102C/096	Xanthomonas citri subsp. citri complete kit / 96	96 tests	
07102C/480	Xanthomonas citri subsp. citricomplete kit / 480	480 tests	
07102C/960	Xanthomonas citri subsp. citri complete kit / 960	960 tests	
07210PC	ELISA Method Control GAR unspecific	1 vial (10 tests)	
07102NC	Negative Control Xanthomonas citri subsp. citri	1 vial (10 tests)	
07132	Xanthomonas fragariae	Size	
	Bacterial Angular Leafspot of strawberry.	DAS ELISA	
07132S/100	Xanthomonas fragariae set / 100	100 tests	
07132S/300	Xanthomonas fragariae set / 300	300 tests	
07132S/500	Xanthomonas fragariae set / 500	500 tests	
07132S/1000	Xanthomonas fragariae set / 1000	1000 tests	
07132C/096	Xanthomonas fragariae complete kit / 96	96 tests	
07132C/480	Xanthomonas fragariae complete kit / 480	480 tests	
07132C/960	Xanthomonas fragariae complete kit / 960	960 tests	
07132PC	Positive Control Xanthomonas fragariae inactivated	1 vial (10 tests)	
07210PC	ELISA Method Control GAR unspecific	1 vial (10 tests)	
07132NC	Negative Control Xanthomonas fragariae	1 vial (10 tests)	
07077	Xanthomonas hortorum pv. pelargonii	Size	
	Bacterial Blight of Pelargonium.	DAS ELISA	
07077S/100	Xanthomonas hortorum pv. pelargonii set / 100	100 tests	
07077S/300	Xanthomonas hortorum pv. pelargonii set / 300	300 tests	
07077S/500	Xanthomonas hortorum pv. pelargonii set / 500	500 tests	
07077S/1000	Xanthomonas hortorum pv. pelargonii set / 1000	1000 tests	
	continued on next page		

Product Section

07077C/096	Xanthomonas hortorum pv. pelargonii complete kit / 96	96 tests	
07077C/480	Xanthomonas hortorum pv. pelargonii complete kit / 480	480 tests	
07077C/960	Xanthomonas hortorum pv. pelargonii complete kit / 960	960 tests	
07077PC	Positive Control Xanthomonas hortorum pv. pelargonii inactivated	1 vial (10 tests)	
07210PC	ELISA Method Control GAR unpecific	1 vial (10 tests)	
07077NC	Negative Control Xanthomonas hortorum pv. pelargonii	1 vial (10 tests)	
07130	Xanthomonas oryzae pv. oryzae	Size	
	Xanthomonas campestris pv. oryzae. Bacterial Leaf Blight of rice.	DAS ELISA	
07130S/100	Xanthomonas oryzae pv. oryzae set / 100	100 tests	
07130S/300	Xanthomonas oryzae pv. oryzae set / 300	300 tests	
07130S/500	Xanthomonas oryzae pv. oryzae set / 500	500 tests	
07130S/1000	Xanthomonas oryzae pv. oryzae set / 1000	1000 tests	
07130C/096	Xanthomonas oryzae pv. oryzae complete kit / 96	96 tests	
07130C/480	Xanthomonas oryzae pv. oryzae complete kit / 480	480 tests	
07130C/960	Xanthomonas oryzae pv. oryzae complete kit / 960	960 tests	
07210PC	ELISA Method Control GAR unpecific	1 vial (10 tests)	
07130NC	Negative Control Xanthomonas oryzae pv. oryzae	1 vial (10 tests)	
07119	Xylella fastidiosa grapevine isolate	Size	
	Pierce's disease. Host range: many important trees and shrubs.	DAS ELISA	
	Recommended in EPPO Diagnostic Standard PM 7/24 (2)		
07119S/100	Xylella fastidiosa grapevine isolate set / 100	100 tests	
07119S/300	Xylella fastidiosa grapevine isolate set / 300	300 tests	
07119S/500	Xylella fastidiosa grapevine isolate set / 500	500 tests	
07119S/1000	Xylella fastidiosa grapevine isolate set / 1000	1000 tests	
07119C/096	Xylella fastidiosa grapevine isolate complete kit / 96	96 tests	
07119C/480	Xylella fastidiosa grapevine isolate complete kit / 480	480 tests	
07119C/960	Xylella fastidiosa grapevine isolate complete kit / 960	960 tests	
07119PC	Positive Control Xylella fastidiosa inactivated	1 vial (10 tests)	
07210PC	ELISA Method Control GAR unpecific	1 vial (10 tests)	
07119NC	Negative Control Xylella fastidiosa grapevine isolate	1 vial (10 tests)	
07138	Xylophilus ampelinus	Size	
	Xanthomonas ampelina. Bacterial blight of grapevine.	DAS ELISA	
07138S/100	Xylophilus ampelinus set / 100	100 tests	
07138S/300	Xylophilus ampelinus set / 300	300 tests	
07138S/500	Xylophilus ampelinus set / 500	500 tests	
07138S/1000	Xylophilus ampelinus set / 1000	1000 tests	
07138C/096	Xylophilus ampelinus complete kit / 96	96 tests	
07138C/480	Xylophilus ampelinus complete kit / 480	480 tests	
07138C/960	Xylophilus ampelinus complete kit / 960	960 tests	
07138PC	Positive Control Xylophilus ampelinus inactivated	1 vial (10 tests)	
07210PC	ELISA Method Control GAR unpecific	1 vial (10 tests)	
07138NC	Negative control Xylophilus ampelinus	1 vial (10 tests)	

Product Section

ELISA Products - Fungi			
07158	Botrytis cinerea grapevine isolate (Cocktail ELISA)	Size	
	Grey Mold. Grauschimmel. Polyphagous plant pathogen.	DAS ELISA	
07158S/100	Botrytis cinerea set / 100	100 tests	
07158S/300	Botrytis cinerea set / 300	300 tests	
07158S/500	Botrytis cinerea set / 500	500 tests	
07158S/1000	Botrytis cinerea set / 1000	1000 tests	
07158C/096	Botrytis cinerea complete kit Loewe®blue / 96	96 tests	
07158C/480	Botrytis cinerea complete kit Loewe®blue / 480	480 tests	
07158C/960	Botrytis cinerea complete kit Loewe®blue / 960	960 tests	
07158PC	Positive Control Botrytis cinerea	1 vial (10 tests)	
07158NC	Negative Control Botrytis cinerea	1 vial (10 tests)	
07079	Phytophthora spp.	Size	
	The antiserum detects many Phytophthora spp. including Phyt. ramorum	DAS ELISA	
07079S/100	Phytophthora spp. set / 100	100 tests	
07079S/300	Phytophthora spp. set / 300	300 tests	
07079S/500	Phytophthora spp. set / 500	500 tests	
07079S/1000	Phytophthora spp. set / 1000	1000 tests	
07079C/096	Phytophthora spp. complete kit / 96	96 tests	
07079C/480	Phytophthora spp. complete kit / 480	480 tests	
07079C/960	Phytophthora spp. complete kit / 960	960 tests	
07079PC	Positive Control Phytophthora spp.	1 vial (10 tests)	
07079NC	Negative Control Phytophthora spp.	1 vial (10 tests)	
07148	Pythium spp.	Size	
	The antiserum detects many Pythium spec.	DAS ELISA	
07148S/100	Pythium spp. set / 100	100 tests	
07148S/300	Pythium spp. set / 300	300 tests	
07148S/500	Pythium spp. set / 500	500 tests	
07148S/1000	Pythium spp. set / 1000	1000 tests	
07148C/096	Pythium spp. complete kit / 96	96 tests	
07148C/480	Pythium spp. complete kit / 480	480 tests	
07148C/960	Pythium spp. complete kit / 960	960 tests	
07148PC	Positive Control Pythium spp.	1 vial (10 tests)	
07148NC	Negative Control Pythium spp.	1 vial (10 tests)	
07157	Rhizoctonia solani derived against AG 1-IB	Size	
	The antiserum detects other anastomose groups as well.	DAS ELISA	
07157S/100	Rhizoctonia solani set / 100	100 tests	
07157S/300	Rhizoctonia solani set / 300	300 tests	
07157S/500	Rhizoctonia solani set / 500	500 tests	
07157S/1000	Rhizoctonia solani set / 1000	1000 tests	
07157C/096	Rhizoctonia solani complete kit / 96	96 tests	
07157C/480	Rhizoctonia solani complete kit / 480	480 tests	
07157C/960	Rhizoctonia solani complete kit / 960	960 tests	
07157PC	Positive Control Rhizoctonia solani	1 vial (10 tests)	
07157NC	Negative Control Rhizoctonia solani	1 vial (10 tests)	

Product Information

© LOEWE Biochemica GmbH 2019

Immuno fluorescence is a very popular and straightforward technique, especially when testing a large number of samples.

We are offering a wide range of polyclonal antisera against plant bacteria from goat and rabbit, secondary fluorescence labelled antibodies, as well as multiwell slides and cover slides for immuno fluorescence studies

- ✓ Antisera and Controls
- ✓ Fluorescence labelled Secondary Antibodies (FITC or Cy3™)
FITC: Excitation 520nm, Emission: 492 nm
Cy3: Excitation 550nm, Emission: 570 nm
- ✓ Multiwell Slides
- ✓ Cover Slides

Due to the large request kits for Immunofluorescence for 10 000 assays are now available:

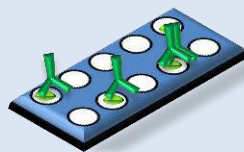
Kit for IF for 10 000 tests:

- ✓ pathogenspecific antiserum
- ✓ fluorescence labelled secondary antibody - (FITC, green)
- ✓ positive control

1. Sample application



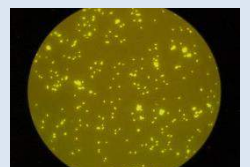
2. Application of specific antiserum



3. Application of secondary labeled antibody



4. Microscopic evaluation



Immuno fluorescence is a technique based on an antigen-antibody reaction, where the detecting antibodies are tagged (labeled) with a fluorescent dye and the antigen-antibody complex is visualized using an ultraviolet (fluorescent) microscope. It allows the visualization of the distribution of the target molecule in the sample.

Product Section

Immuno Fluorescence Products			
Immuno Fluorescence - Antisera			
07354	Antiserum <i>Acidovorax avenae</i> subsp. <i>citrulli</i> ex rabbit	Size	
07354/01	Antiserum <i>Acidovorax</i> a. subsp. <i>citrulli</i> ca. 5 000 tests (20µl/well)	0.1 ml	
07354/02	Antiserum <i>Acidovorax</i> a. subsp. <i>citrulli</i> ca.10 000 tests (20µl/well)	0.2 ml	
07354/10	Antiserum <i>Acidovorax</i> a. subsp. <i>citrulli</i> ca.50 000 tests (20µl/well)	1.0 ml	
07354PC	Positive IF Control <i>Acidovorax</i> a. subsp. <i>citrulli</i> inactivated	1 vial	
07454/10000	Immunofluorescence Kit A. <i>avenae</i> subsp. <i>citrulli</i> for 10000 tests	10000 tests	
07363	Antiserum <i>Clavibacter michiganensis</i> subsp. <i>michiganensis</i> ex goat	Size	
	Recommended in EPPO Diagnostic Standard PM 7/42 (3)		
07363/01	Antiserum <i>Clavibacter</i> m. subsp. <i>michiganensis</i> ca. 10 000 tests (20µl/well)	0.1 ml	
07363/02	Antiserum <i>Clavibacter</i> m. subsp. <i>michiganensis</i> ca. 20 000 tests (20µl/well)	0.2 ml	
07363PC	Positive IF Control <i>Clavibacter</i> m. subsp. <i>michiganensis</i> inactivated	1 vial	
07463/10000	Immunofluorescence Kit C. m. subsp. <i>michiganensis</i> for 10000 tests	10000 tests	
07364	Antiserum <i>Clavibacter michiganensis</i> subsp. <i>sepedonicus</i> ex goat	Size	
07364/01	Antiserum <i>Clavibacter</i> m. subsp. <i>sepedonicus</i> ca. 50 000 tests (20µl/well)	0.1 ml	
07364/02	Antiserum <i>Clavibacter</i> m. subsp. <i>sepedonicus</i> ca.100 000 tests (20µl/well)	0.2 ml	
07310PC	IF Method Control RAG unspecific	1 vial	
07464/10000	Immunofluorescence Kit C. m. ssp. <i>sepedonicus</i> for 10000 tests	10000 tests	
07381	Antiserum <i>Dickeya (=Pectobacterium) chrysanthemi</i> ex goat	Size	
07381/01	Antiserum <i>Dickeya chrysanthemi</i> ca. 5 000 tests (20µl/well)	0.1 ml	
07381/02	Antiserum <i>Dickeya chrysanthemi</i> ca. 10 000 tests (20µl/well)	0.2 ml	
07381/10	Antiserum <i>Dickeya chrysanthemi</i> ca. 100 000 tests (20µl/well)	1.0 ml	
07381PC	Positive IF Control <i>Dickeya chrysanthemi</i> inactivated	1 vial	
07481/10000	Immunofluorescence Kit <i>Dickeya chrysanthemi</i> for 10000 tests	10000 tests	
07329	Antiserum <i>Pantoea stewartii</i> subsp. <i>stewartii</i> ex rabbit	Size	
	Recommended EPPO Diagnostic Standard PM 7/60 (2)		
07329/01	Antiserum <i>Pantoea</i> st. subsp. <i>stewartii</i> ca. 5 000 tests (20µl/well)	0.1 ml	
07329/02	Antiserum <i>Pantoea</i> st. subsp. <i>stewartii</i> ca. 10 000 tests (20µl/well)	0.2 ml	
07329/10	Antiserum <i>Pantoea</i> st. subsp. <i>stewartii</i> ca. 50 000 tests (20µl/well)	1.0 ml	
07329PC	Positive IF Control <i>Pantoea</i> st. subsp. <i>stewartii</i> inactivated	1 vial	
07429/10000	Immunofluorescence Kit P. st.subsp. <i>stewartii</i> for 10000 tests	10000 tests	
07381	Antiserum <i>P. chrysanthemi</i> see <i>Dickeya chrysanthemi</i>		
07339	Antiserum <i>Pseudomonas syringae</i> pv. <i>tomato</i> ex rabbit	Size	
07339/01	Antiserum <i>Pseudomonas</i> s. pv. <i>tomato</i> ca. 1 000 tests (20µl/well)	0.1 ml	
07339/02	Antiserum <i>Pseudomonas</i> s. pv. <i>tomato</i> ca. 2 000 tests (20µl/well)	0.2 ml	
07339/10	Antiserum <i>Pseudomonas</i> s. pv. <i>tomato</i> ca. 10 000 tests (20µl/well)	1.0 ml	
07339PC	Positive Control <i>Pseudomonas</i> s. pv. <i>tomato</i> inactivated	1 vial	
07439/10000	Immunofluorescence Kit <i>Pseudomonas</i> tomato for 10000 tests	10000 tests	

Product Section

07355	Antiserum Plasmopora viticola ex rabbit	Size	
	Identification of oospores only. Cross reaction with other oomycetes		
07355/02	Antiserum Plasmopora viticola ca.10 000 tests (20µl/well)	0.2 ml	
07355/10	Antiserum Plasmopora viticola ca. 50 000 tests (20µl/well)	1.0 ml	
07356	Antiserum Ralstonia solanacearum ex goat	Size	
07356/01	Antiserum Ralstonia solanacearum 50 000 tests (20µl/well)	0.1 ml	
07356/02	Antiserum Ralstonia solanacearum 100 000 tests (20µl/well)	0.2 ml	
07310PC	Method Control RAG unspecific	1 vial	
07456/10000	Immunofluorescence Kit Ralstonia solanacearum for 10 000 tests	10 000 tests	
07373	Antiserum Xanthomonas arboricola pv. corylina ex rabbit	Size	
07373/01	Antiserum Xanthomonas a. pv. corylina ca. 3 000 tests (20µl/well)	0.1 ml	
07373/02	Antiserum Xanthomonas a. pv. corylina ca. 6 000 tests (20µl/well)	0.2 ml	
07373/10	Antiserum Xanthomonas a. pv. corylina ca. 30 000 tests (20µl/well)	1.0 ml	
07373PC	Positive IF control X. arboricola pv. corylina inactivated	1 vial	
07473/10000	Immunofluorescence Kit X. arboricola pv. corylina for 10 000 tests	10 000 tests	
07325	Antiserum Xanthomonas axonopodis pv. begoniae ex rabbit	Size	
07325/01	Antiserum Xanthomonas a. pv. begoniae ca. 5 000 tests (20µl/well)	0.1 ml	
07325/02	Antiserum Xanthomonas a. pv. begoniae ca. 10 000 tests (20µl/well)	0.2 ml	
07325/10	Antiserum Xanthomonas a. pv. begoniae ca. 50 000 tests (20µl/well)	1.0 ml	
07325PC	Positive IF Control Xanthomonas axonopodis pv. begoniae inactivated	1 vial	
07425/10000	Immunofluorescence Kit X. campestris Lobelia for 10 000 tests	10 000 tests	
07361	Antiserum Xanthomonas axonopodis pv. phaseoli ex rabbit	Size	
07361/01	Antiserum Xanthomonas a. pv. phaseoli ca. 5 000 tests (20µl/well)	0.1 ml	
07361/02	Antiserum Xanthomonas a. pv. phaseoli ca. 10 000 tests (20µl/well)	0.2 ml	
07361/10	Antiserum Xanthomonas a. pv. phaseoli ca. 50 000 tests (20µl/well)	1.0 ml	
07361PC	Positive IF Control Xanthomonas axonopodis pv. phaseoli inactivated	1 vial	
07461/10000	Immunofluorescence Kit X. axonopodis pv. phaseoli for 10 000 tests	10 000 tests	
07324	Antiserum X. campestris Lobelia isolate ex rabbit	Size	
07324/01	Antiserum Xanthomonas c. Lobelia isolate ca. 5 000 tests (20µl/well)	0.1 ml	
07324/02	Antiserum Xanthomonas c. Lobelia isolate ca.10 000 tests (20µl/well)	0.2 ml	
07324/10	Antiserum Xanthomonas c. Lobelia isolate ca. 50 000 tests (20µl/well)	1.0 ml	
07324PC	Positive IF Control Xanthomonas campestris Lobelia isolate inactivated	1 vial	
07424/10000	Immunofluorescence Kit X. campestris Lobelia for 10 000 tests	10 000 tests	
07331	Antiserum Xanthomonas campestris pv. vesicatoria ex rabbit	Size	
07331/01	Antiserum Xanthomonas c. pv. vesicatoria ca. 2 000 tests (20µl/well)	0.1 ml	
07331/02	Antiserum Xanthomonas c. pv. vesicatoria ca. 4 000 tests (20µl/well)	0.2 ml	
07331/10	Antiserum Xanthomonas c. pv. vesicatoria ca. 20 000 tests (20µl/well)	1.0 ml	
07331PC	Positive IF Control Xanthomonas campestris pv. vesicatoria inactivated	1 vial	
07431/10000	Immunofluorescence Kit X. campestris pv. vesicatoria for 10 000 tests	10 000 tests	

Product Section

07302	Antiserum Xanthomonas citri subsp. citri		
07302/01	Antiserum Xanthomonas citri subsp. citri ca. 1 000 tests (20µl/well)	0.1 ml	
07302/02	Antiserum Xanthomonas citri subsp. citri ca. 2 000 tests (20µl/well)	0.2 ml	
07302/10	Antiserum Xanthomonas citri subsp. citri ca. 10 000 tests (20µl/well)	1.0 ml	
07308PC	IF Method control GAR unpecific	1 vial	
07402/10000	Immunofluorescence Kit X. citri subsp. citri for 10 000 tests	10 000 tests	
07332	Antiserum Xanthomonas fragariae ex rabbit	Size	
07332/01	Antiserum Xanthomonas fragariae ex rabbit ca. 1000 tests (20µl/well)	0.1 ml	
07332/02	Antiserum Xanthomonas fragariae ex rabbit ca. 2000 tests (20µl/well)	0.2 ml	
07332/10	Antiserum Xanthomonas fragariae ex rabbit ca. 10 000 tests (20µl/well)	1.0 ml	
07332PC	Positive IF Control Xanthomonas fragariae inactivated	1 vial	
07432/10000	Immunofluorescence Kit Xanthomonas fragariae for 10 000 tests	10 000 tests	
07377	Antiserum Xanthomonas hortorum pv. pelargonii ex rabbit	Size	
07377/01	Antiserum Xanthomonas h. pv. pelargonii ca. 5 000 tests (20µl/well)	0.1 ml	
07377/02	Antiserum Xanthomonas h. pv. pelargonii ca.10 000 tests (20µl/well)	0.2 ml	
07377/10	Antiserum Xanthomonas h. pv. pelargonii ca. 50 000 tests (20µl/well)	1.0 ml	
07377PC	Positive IF Control Xanthomonas hortorum pv. pelargonii inactivated	1 vial	
07402/10000	Immunofluorescence Kit Xanthomonas h. pv. pelargonii for 10 000 tests	10 000 tests	
07330	Antiserum Xanthomonas oryzae pv. oryzae ex rabbit	Size	
07330/01	Antiserum Xanthomonas oryzae pv. oryzae ca. 5000 tests (20µl/well)	0.1 ml	
07330/02	Antiserum Xanthomonas oryzae pv. oryzae ca. 10 000 tests (20µl/well)	0.2 ml	
07330/10	Antiserum Xanthomonas oryzae pv. oryzae ca. 100 000 tests (20µl/well)	1.0 ml	
07308PC	IF Method Control GAR unpecific	1 vial	
07430/10000	Immunofluorescence Kit X. oryzae pv. oryzae for 10 000 tests	10 000 tests	
07319	Antiserum Xylella fastidiosa ex rabbit	Size	
	Recommended in EPPO Diagnostic Protocol PM 7/24 (2)		
07319/01	Antiserum Xylella fastidiosa ca. 5 000 tests (20µl/well)	0.1 ml	
07319/02	Antiserum Xylella fastidiosa ca. 10 000 tests (20µl/well)	0.2 ml	
07319PC	Positive IF control Xylella fastidiosa inactivated	1 vial	
07419/10000	Immunofluorescence Kit Xylella fastidiosa for 10 000 tests	10 000 tests	
07338	Antiserum Xylophilus ampelinus	Size	
07338/01	Antiserum Xylophilus ampelinus ca. 1 000 tests (20µl/well)	0.1 ml	
07338/02	Antiserum Xylophilus ampelinus ca. 2 000 tests (20µl/well)	0.2 ml	
07338/10	Antiserum Xylophilus ampelinus ca. 10 000 tests (20µl/well)	1.0 ml	
07338PC	Positive IF control Xylophilus ampelinus inactivated	1 vial	
07438/10000	Immunofluorescence Kit Xylophilus ampelinus for 10 000 tests	10 000 tests	

Product Section

Immuno Fluorescence - Secondary Antibodies		Size	
07204	Goat-anti-rabbit IgG(H+L)Cy3™ ca. 10 000 IF tests (20 µl/well) Stable red fluorescence. Excitation 550 nm, Emission 570 nm	1.5 mg	
07201	Goat-anti-rabbit IgG(H+L)FITC ca. 10 000 IF tests (20 µl/well) Green fluorescence. Excitation 520 nm, Emission 492 nm	1.5 mg	
07202	Rabbit-anti-goat(H+L)Cy3™ ca. 10 000 IF tests (20 µl/well) Stable red fluorescence. Excitation 550 nm, Emission 570 nm (for use with 07056, 07064, and 07381)	1.5 mg	
07200	Rabbit-anti-goat(H+L)FITC ca. 10 000 IF tests (20 µl/well) Green fluorescence. Excitation 520 nm, Emission 492 nm (for use with 07056, 07064, and 07381)	1.5 mg	
Immuno Fluorescence - Disposables		Size	
07400/100	Multiwell Slides IFT 10x6 blue	2x50 slides	
07401/1000	Cover Slides 24x60 mm	1000 slides	
ELISA Chemicals		Size	
00103/025	Albumin for ELISA	25 g	
00103/100	Albumin for ELISA Special quality tested for use in ELISA.	100 g	
00104/001	Blocking Milk powder Defatted milk powder for blocking in special ELISA techniques.	1 kg	
07600/001	Coating Buffer powder Standard formulation for ELISA according to Clark and Adams (1977). No preservative added.	1 liter	
07601/001	Conjugate/Sample Buffer powder Standard formulation for ELISA according to Clark and Adams (1977). No preservative added.	1 liter	
07615/001	Conjugate/Sample Buffer LOEWE II powder Special blocking formulation for selected ELISA tests. No preservative added.	1 liter	
07613/001	Extraction Buffer LOEWE I powder Special formulation for sample extraction in ELISA 07049 TuMV /07091 TYMV.	1 liter	
07612/001	Extraction Buffer LOEWE III powder special formulation for sample extraction in ELISA 07177 TYLCV	1 liter	

Product Section

00130/005	4-Nitrophenylphosphate Na ₂ -salt hexahydrate powder	5 g	
00130/025	4-Nitrophenylphosphate Na ₂ -salt hexahydrate powder	25 g	
	Chromogenic substrate for determination of Alkaline Phosphatase activity.		
00134/001	Polyvinylpyrrolidone K25	1 kg	
	Standard formulation for ELISA according to Clark and Adams (1977).		
	No preservative added.		
07614/005	Substrate Tablets 20 mg	5 tablets	
07614/010	Substrate Tablets 20 mg	10 tablets	
	Tablets à 20 mg 4-Nitrophenylphosphate Na ₂ -salt hexahydrat.		
07617/005	Substrate Tablets 5 mg	5 tablets	
07617/010	Substrate Tablets 5 mg	10 tablets	
	Tablets à 5 mg 4-Nitrophenylphosphate Na ₂ -salt hexahydrat.		
07602/025	Substrate Buffer 5X liquid	25 ml	
07602/100	Substrate Buffer 5X liquid	100 ml	
	Standard formulation for ELISA according to Clark and Adams (1977).		
	No preservative added.		
00131/100	Tween 20® ELISA grade	100 ml	
	Ingredient in standard ELISA buffer formulations according to Clark and Adams.		
07603/005	Wash Buffer Powder	5 liter	
	Standard formulation for ELISA according to Clark and Adams (1977).		
	No preservative added.		
ELISA Disposables		Size	
07803/05	ELISA-Plates Greiner Microlon 600 High Binding	5 pieces	
07803/10	ELISA-Plates Greiner Microlon 600 High Binding	10 pieces	
07803/100	ELISA-Plates Greiner Microlon 600 High Binding	100 pieces	
07800/05	ELISA-Plates Nunc MaxiSorp™	5 pieces	
07800/10	ELISA-Plates Nunc MaxiSorp™	10 pieces	
07800/60	ELISA-Plates Nunc MaxiSorp™	60 pieces	
07802/010	Sealing Tapes suitable for 96-well ELISA plates, multiple use	10 tapes	
07802/100	Sealing Tapes suitable for 96-well ELISA plates, multiple use	100 tapes	

ALLGEMEINE VERKAUFS – UND LIEFERBEDINGUNGEN (Inland)

Allgemeines

Unsere Verkaufs- und Lieferbedingungen sind Bestandteil aller Angebote und aller mit unseren Kunden geschlossenen Verträge. Einkaufsbedingungen des Kunden verpflichten uns auch dann nicht, wenn wir nicht ausdrücklich widersprechen. Mit der Auftragserteilung erkennt der Kunde unsere Bedingungen stillschweigend an, ohne dass es einer besonderen Vereinbarung bedarf.

Angebote, Aufträge

Unsere Angebote sind bezüglich Preis, Liefermenge und -frist freibleibend. Dies gilt auch für unsere Kataloge und Preislisten. Schriftlich oder mündlich erteilte Aufträge gelten nur dann als von uns akzeptiert, wenn sie schriftlich bestätigt werden. Die Rechnungserteilung gilt als Auftragsbestätigung.

Preise

Unsere Preise verstehen sich zuzüglich der gesetzlichen Mehrwertsteuer in der jeweils gültigen Höhe. Bestätigte Preise sind freibleibend. Wenn nicht bei Vertragsabschluss anders durch uns schriftlich bestätigt, sind für die Berechnung die am Tage der Lieferung gültigen Preise maßgebend.

Versand

Bei Aufträgen über 150.00 Euro netto liefern wir frei Postamt oder Bahnstation ohne Verpackungszuschlag. Bei Aufträgen unter 150.00 Euro netto berechnen wir Verpackungs- sowie Versandkosten. Zustellgebühren für Paketsendungen sowie Rollgelder gehen in jedem Fall zu Lasten des Bestellers. Wir behalten uns die Wahl der jeweils günstigsten Versandart vor. Der Versand erfolgt unversichert auf Gefahr des Käufers; eine Transportversicherung wird nur auf ausdrückliche Anweisung und auf Kosten des Käufers abgeschlossen.

Zahlungsbedingungen

Unsere Rechnungen gelten als anerkannt, falls nicht innerhalb von 30 Tagen schriftlich widersprochen wird. Die Zahlungsfrist läuft ab Rechnungsdatum und beträgt 30 Tage. Bei Zahlungsverzug des Käufers wird auch ein nichtfälliger Teil der Schuld fällig und sofort einforderbar. Der Verkäufer kann ausstehende Lieferungen verweigern, bis der Käufer seiner Zahlungspflicht nachgekommen ist.

Eigentumsvorbehalt

Die gelieferte Ware bleibt bis zur völligen Bezahlung des Kaufpreises unser Eigentum. Der Käufer ist bis dahin nicht berechtigt, die Ware an Dritte zu verpfänden, oder als Sicherheit zu übereignen. Der Käufer ist widerruflich zur Weiterveräußerung dieser Vorbehaltsware im Rahmen eines geordneten Geschäftsbetriebs berechtigt. Die aus einer Weiterveräußerung an Dritte entstehenden Forderungen tritt er in Höhe unserer Forderungen an uns ab. Zugriffe Dritter auf die Vorbehaltsware oder abgetretene Forderungen müssen uns unverzüglich angezeigt werden. Der Käufer trägt für die Dauer des Eigentumsvorbehalts die Verantwortung für ausreichende Versicherung und für die Einhaltung der Lagerungsvorschriften.

Haftung

Unsere Produkte sind nur für den Labor- und Fabrikationsbereich bestimmt. Sie dürfen weder in der Humanmedizin noch im Haushalt noch als Lebens- und Genussmittel verwendet werden. Wir haften nicht für Personen-, Sach- und Vermögensschäden, die durch unsachgemäße und bestimmungswidrige Handhabung unserer Produkte entstanden sind. Wir lehnen auch jeden Haftungsrückgriff für Schäden ab, welche unseren Kunden durch Nichtbeachtung gesetzlicher Schutzbestimmungen entstanden sind. Soweit wir nicht Hersteller der von uns vertriebenen Produkte sind, beschränkt sich unsere Produkthaftung auf unsere Tätigkeit als Lieferant. Insbesondere übernehmen Besteller von Positivkontrollen die Verantwortung für das Hantieren, Lagern und für den möglichen Missbrauch dieser Produkte. Es liegt in der Verantwortung des Käufers, festzustellen, ob er entsprechend der gültigen gesetzlichen Bestimmungen diese Produkte beziehen und mit Ihnen umgehen darf.

Beanstandungen / Rücksendungen

Mängelrügen müssen innerhalb von 7 Tagen nach Empfang der Ware schriftlich geltend gemacht werden. Mängelrügen entbinden den Käufer nicht von seiner Zahlungspflicht. Die beanstandete Ware darf nur mit unserem vorherigen ausdrücklichen Einverständnis zurückgesandt werden. Bei berechtigten Beanstandungen behalten wir uns die Wahl zwischen Ersatzlieferung und Gutschrift vor.

Erfüllungsort / Gerichtsstand

Erfüllungsort für Lieferung und Zahlung ist Sauerlach. Gerichtsstand ist München.

GENERAL TERMS AND CONDITIONS FOR NON-DOMESTIC SALE

Prices and Terms of Payment

The prices listed in our product catalogue are net of the handling fee, VAT as required by law and the respective shipping costs. Please contact our office in Sauerlach, Germany for direct orders or information about the possibility to order through our local supplier. We do not accept payment by credit card. Payment is in advance unless agreed otherwise. All bank charges and costs for money transfer to our account in Germany are on the purchaser's full expense. Shipping and handling charges will be applied to the invoice. Please contact us for details on bank transfer.

Delivery terms and shipping

Delivery and services are CPT (Carriage Paid To) in reference to Incoterms 2010, unless agreed differently. With the transfer of the material to the freight carrier, the risk of accidental deterioration and accidental loss passes to the customer.

Products are shipped at ambient temperature via TNT, DHL, FEDEX, UPS or others. Purchasers outside Germany bear all freight costs. LOEWE® Biochemica GmbH only obtains transportation insurance with written a request from the customer. If you have special shipping requirements, please provide clear instructions when ordering.

The deliveries and services are subject to various national and international provisions, in particular infection protection law, genetic engineering law and arms control law. The customer is required to inform himself of the provisions of the above-mentioned laws as well as any recent or relevant updates to these laws. The customer assumes sole responsibility for compliance with the applicable laws. LOEWE® Biochemica GmbH assumes no liability for legal violations or breaches of duty by the customer. Inquiring about current national regulations such as import restrictions is also the responsibility of the customer. If import documents are required, the customer is obligated to provide these to LOEWE® Biochemica GmbH unsolicited and in a timely manner.

Address

LOEWE® Biochemica GmbH
Mühlweg 2a
D-82054 Sauerlach
UStID-Nr. DE131187586

Warranties and Liabilities

LOEWE® Biochemica GmbH warrants that its products perform as described in our product specification sheets. Should any product fail for reasons other than misuse, at LOEWE® Biochemica GmbH's option, it will be replaced free of charge, or the purchase price will be refunded. Returns must be authorized by us. This warranty is exclusive, and LOEWE® Biochemica GmbH makes no other warranty expressed or implied. LOEWE® Biochemica GmbH shall not be liable for any accidental, consequential, or contingent damages. Please contact our technical service in case you have any question, or if a product fails to work as expected.

Discounts

For information on bulk or volume discounts, please contact us.

Proper Handling

All chemicals are produced for laboratory use for professionals only. We cannot accept liability caused by improper handling within the laboratory or in the household or when used on humans or animals. Our products are in particular not admitted for human application. Customers ordering and receiving products for testing plant pathogens assume all responsibility for the proper and legally compliant handling of the biological material. The customer must ensure that the biological material received is processed by adequately trained qualified personnel and in an adequate laboratory environment.

LOEWE® Biochemica GmbH is not responsible for damages and/or injuries arising from their supply. It is also in the responsibility of the customer to verify whether he/she is allowed to receive and handle this material.

Jurisdiction

German law and German Jurisdiction are applicable to all legal and contractual disputes. Exclusive place of jurisdiction is Munich.

Tel: 08104 616 20
Telefax 08104 616 48
sales@loewe-info.com

LOEWE® Biochemica GmbH

**Mühlweg 2a
82054 Sauerlach
Germany**

**Phone: +49 (0) 810461620
Fax: +49 (0) 8104 61648
E-mail: sales@loewe-info.com
Web: www.loewe-info.com**

Valid from 01.01.2019

© LOEWE® Biochemica GmbH 2019