

Sterilized Diluents



● Need no preparation

Pro-media Diluents are sterilized and disposable.

● Ready to use and Easy to use

Required volume is filled in a cup or container, just open to use.

● Choose among six types depending on purpose

Serial diluent, 90ml, 225ml, 1000ml, 5000ml of PBS, and 225ml Alkaline peptone

● Storable at room temperature

◆ Specifications are subject to be changed for enhancement, with out notice.

Manufacturer **ELMEX Limited**

2-2 Ichigayasadohara-cho, Shinjuku-ku, Tokyo 162-0842 JAPAN
TEL : 081-3-5229-7911 FAX : 081-3-5261-4130
URL : <http://www.elmex.co.jp> e-mail address : sales@elmex.co.jp

Operation

MT-11: 9ml of PBS in a cup for serial dilution.

1. Sterilize the aluminum lid with alcohol and a flame.
2. Make two holes by an opener (Option. Code No.: OS-01) on the aluminum of each cups.
Two holes are one for "sample inlet" and the other for "sample suction" to avoid contamination.

<Point> The rest of cups which aluminum lid is unopened can be use next.

<Note> When you use it, please sterilize it with this way before.

MV2-90: 90ml of PBS in a bottle for 10g specimen

1. Sterilize the aluminum lid with alcohol.
2. Open the aluminum lid and the entire PBS in a sterilized homogenize bag or lifter bag which has 10g specimen in it.
3. Use it as the 10 times of diluted sample, after homogenize by a homogenizer.

<Useful example:> In case of liquid or powdery specimen

Open the aluminum lid after sterilize with alcohol, put the specimen into MV2-90 bottle directly, then shake it with keeping the aluminum lid by fingers. (Refer to the right photo)

MV-225: 225ml of PBS in a bottle for 25g specimen

MV-225AP: 225ml of Alkaline peptone in a bottle for 25g for Vibrio parahemolyticus test specimen. Operation for MV-225 and MV-225AP is as same as MV2-90

MV2-1000: 1,000ml of PBS in a bottle for Dilution system "DT cube".

Sterilize the cap with alcohol before connect DT cube.



Separate-reconnect-able cup

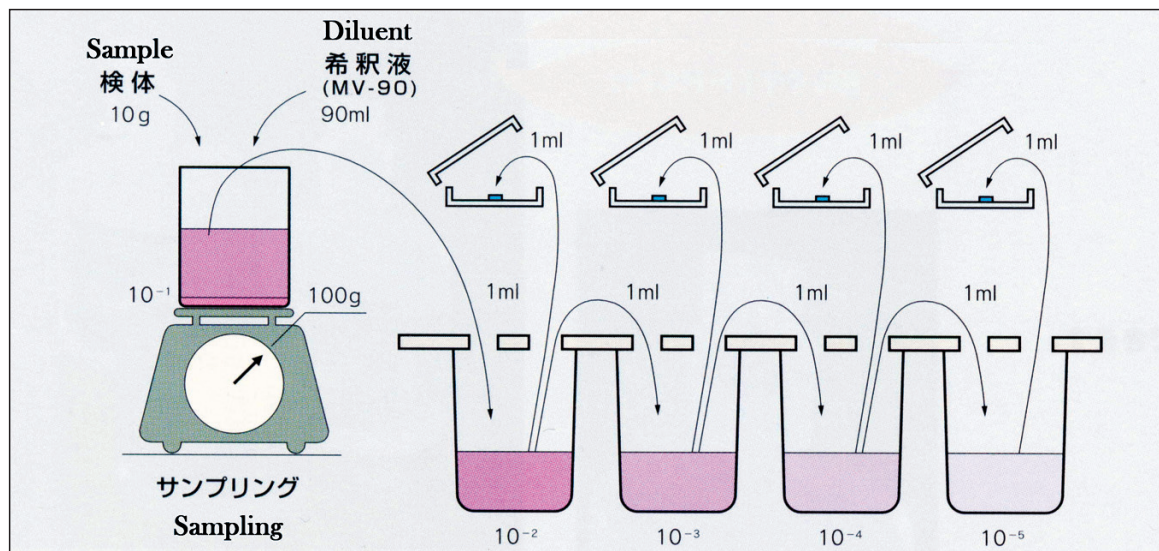


Useful example: put specimen into a bottle and shake.



MV2-1000 connecting image

Preparation and Serial dilution with MT-11



Code No.	Specifications	Specimen	Qty /box	Package materials
MT-11	PBS-0.9% NaCl (Phosphate Buffered Saline)	9ml for serial dilution	1ml	128 cup Cup:PP, Lid:Aluminum
MV2-90	Formula (g/1000ml pure water)	90ml for 10 times dilution	10g	40 pc Bottle:PE, Lid:Aluminum
MV-225	Sodium chloride (NaCl) 0.85g	225ml for 10 times dilution	225g	40 pc Bottle:PE, Lid:Aluminum
MV2-1000	Disodium hydrogenphosphate 12-water (Na ₂ HPO ₄ · 12H ₂ O)··· 0.0785g	1,000ml for dilution system	10 pc	Bottle:PE, Cap:PP
MV-5000	Potassium dihydrogenphosphate (KH ₂ PO ₄) 0.0127g	5,000ml for dilution system	2 pc	Bottle:PE, Cap:PP
MV-225AP	Alkaline peptone-2.0% Nacl	225ml for 10 times dilution of Vibrio parahemolyticus	225g	40 pc Bottle:PE, Lid:Aluminum

◆Specifications are subject to be changed for enhancement, with out notice.

Manufacturer **ELMEX Limited**

2-2 Ichigayasadohara-cho, Shinjuku-ku, Tokyo 162-0842 JAPAN
TEL : 081-3-5229-7911 FAX : 081-3-5261-4130
URL : <http://www.elmex.co.jp> e-mail address : sales@elmex.co.jp

Enzyme substrates broth for coliform group and *E.coli* test simultaneously

Sodium Dodecyl sulfate **X-GAL+MUG** Broth

Listed in "Standard Methods of Analysis
in Food Safety Regulation 2004"



Need no preparation

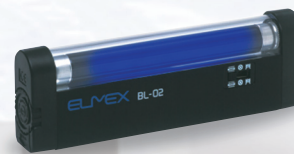
No Durham tubes nor water thermostat are required. Ready made sterilized kit saves your preparation time, such as autoclaving nor filling.

Room temperature storable

saves your refrigerator space.

Simultaneous test available

Coliform group turns to blue by X-GAL and *E.coli* fluorescence by MUG at 24 hours. No need EMB test.



BL-02



Paper disc

Code No.	Specifications	Qty/box
XM-30	10ml for 1ml sample	128cup
XM-31	Double density 10ml for 10ml sample	128cup
XM-32	Double density 5ml for 5ml sample	128cup
XM0001	8.5g/AL bag (preparation use)	20bag
BL-02	Black light 366nm for <i>E.coli</i> test	1pc
OS-01	Opener for XM-30, XM-31, XM-32	1pc
IND0101	Paper disc for Indole test	100pc
GLU0101	Paper disc for β -glucuronidase test	100pc

◆Specifications are subject to be changed for enhancement, with out notice.

Manufacturer **ELMEX Limited**

2-2 Ichigayasadohara-cho, Shinjuku-ku, Tokyo 162-0842 JAPAN
TEL : 081-3-5229-7911 FAX : 081-3-5261-4130
URL : <http://www.elmex.co.jp> e-mail address : sales@elmex.co.jp

How to use

- 1) Flame the surface of the aluminum sheet. It is not needed just after open the shrink-pack.
 - 2) Make a hole on the surface of the aluminum sheet with an opener (OS-01) or a pipette.
 - 3) Put sample into a cup through this hole.
<Sample volume> XM-30 : 1ml, XM-31 : 10ml, MX-32 : 5ml
 - 4) Incubate it at 36°C ± 1°C for 24 hours.
- 4-cup-train of XM-30, XM-31, MX-32 are able to separate and reconnect, the unopened cups can be used next time.
 - After use, sterilize before scrap.
 - Use XM0001 after preparation. Put broth into test tube and sterilize.



Make a hole with OS-01



Put sample in

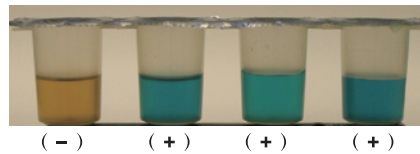
Technical information

Coliform group positive

β -Galactosidase, an indicator of coliform group, is lactose fermentation enzyme which exists in coliform group that lactose is fermented. The enzyme substrate X-GAL is hydrolyzed by this lactose fermentation enzyme, and forms 5,5-Dibromo-4,4-dichloro indigo, thus turning blue~blue-violet.

<Note> Sample which has a large quantity of lactic acid bacteria will be a case to show a false-positive.

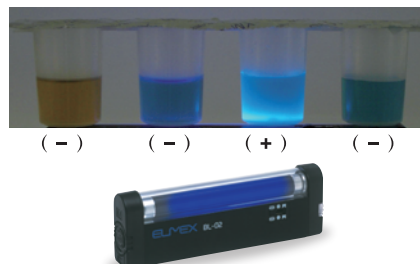
X-GAL



E.coli positive

β -Glucuronidase, an indicator of *E.coli*, is a peculiar enzyme present only in intestinal bacteria except Salmonella and Shigella, and 95% of *E.coli* has this enzyme. When this β -glucuronidase is hydrolyzed by the enzyme substrate MUG, 4-Methylumbelliferon disengages and decomposes, then shows fluorescence with irradiating by UV light (wavelength : 366nm) . This fluorescence can be observed under indoor light.

MUG

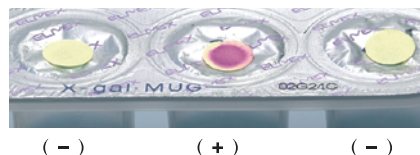


Indole test

Tryptophanase activity or the ability to form indole from tryptophan is present in 95% *E.coli* strain. The indole test is an auxiliary test for detecting about 5% β -Glucuronidase-negative *E.coli* rarely present.

<Note> It shows positive in case that the other indole production bacteria exist or coexist with *E.coli*.

Indole

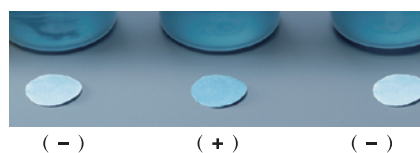


Indole vaporized reacts to the paper disc which impregnated p-Dimethylamino benzoic aldehyde and changes color into light-violet.

β -Glucuronidase test

Raw animal meat and fresh seafood contains β -Glucuronidase. A coliform group test based on a light-emitting enzyme substrate (MUG) may produce fluorescence thus showing a false-positive reaction, even if *E.coli* is not present. The β -Glucuronidase test is an auxiliary test for checking this false indication of positive reaction.

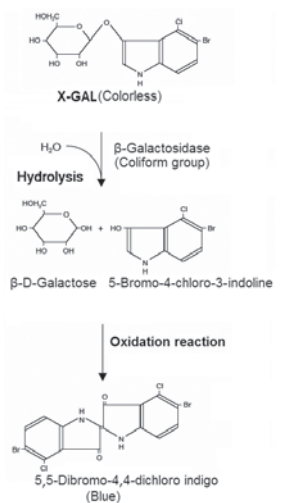
β -Glucuronidase



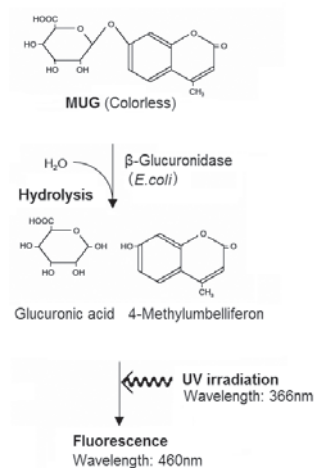
β -Glucuronidase reacts to the paper disc which impregnated X-GLUC and turns into blue.

Reaction

Coliform group reaction



E.coli reaction



Ingredient

	17.08g/1000ml pure water
Peptone	5.0g
Sodium chloride	5.0g
Monobasic potassium phosphate	2.0g
Potassium phosphate	2.7g
Sodium dodecyl sulfate	0.1g
Tryptophan	1.0g
Sorbitol	1.0g
Enzyme substrates X-GAL & MUG	0.28g
	pH6.8±0.2

◆Specifications are subject to be changed for enhancement, with out notice.

Manufacturer **ELMEX Limited**

2-2 Ichigayasadohara-cho, Shinjuku-ku, Tokyo 162-0842 JAPAN
TEL : 081-3-5229-7911 FAX : 081-3-5261-4130
URL : <http://www.elmex.co.jp> e-mail address : sales@elmex.co.jp

Bacteria test for environmental StampAgar

Totally new ideal design for operation



● Easy consecutive operation

with fitting your fingers on the curve, designed on the side of the plate, even if piled two or three plates.

● Individual molded container

prevents your fingers from burr, such as a serial plate separation makes it.

● Color identification

marked on the brim of plate prevents an agar choice error.

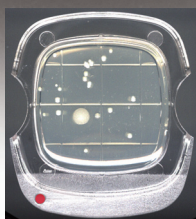
● Write on a sample ID

Available by a felt-tip pen on its brim of the plate.

● Room temperature storable

saves your refrigerator space.

Product line



Code No. SAAC-60

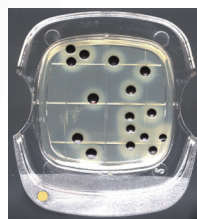
StampAgar **AC**

Total Bacteria Count Agar

(Plate Count Agar)

Incubation : 36°C, 1~2days

Result : Count all colonies appeared.



Code No. SASA-60

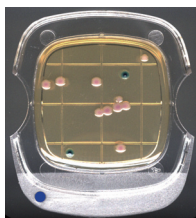
StampAgar **SA**

Staphylococcus Aureus Count Agar

(Egg yolk tellurite glycine mannitol agar)

Incubation : 36°C, 1~2days

Result : Count the black colonies which has a translucent aureole (halo) .



Code No. SAEC-60

StampAgar **EC**

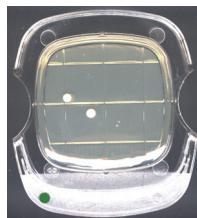
AgarTricolor

(Magenta-GAL + X-GLUC agar)

E.coli and Coliform group simultaneous test

Incubation : 36°C, 1day

Result : Coliform G. positive : red ~ purplish-pink
E.coli positive : blue ~ purplish blue



Code No. SAPD-60

StampAgar **PD**

Yeasts & Molds Count Agar

(Potato dextrose agar with chloramphenicol)

Incubation : 20~25°C, 2~5days

Result : Count all colonies appeared.

Preservation	Shade, Room temperature (15~ 25°C)
Shelf life	6 months from the manufactured day. It is to be unopened box.
Media area	10cm ²
Package specifications	60plate (10pcs / zip bag ×6)
Materials	Plate : Plastic, Zip bag : Plastic, Package Box : Cardboard

◆Specifications are subject to be changed for enhancement, with out notice.

Manufacturer **ELMEX Limited**

2-2 Ichigayasadohara-cho, Shinjuku-ku, Tokyo 162-0842 JAPAN
TEL : 081-3-5229-7911 FAX : 081-3-5261-4130
URL : <http://www.elmex.co.jp> e-mail address : sales@elmex.co.jp

Sterilized Diluents



Peptone types of MV-225



Buffered peptone water

Maximum recovery diluent

Alkaline peptone water

- **Need no preparation**

Pro-media Diluents are sterilized and disposable.

- **Ready to use and Easy to use**

Required volume is filled in a cup or container, just open to use.

- **Choose among eight types depending on purpose**

Serial diluent, 90mL, 225mL, 1000mL, 5000mL of PBS, and 225mL of peptone types

- **Storable at room temperature**

◆ Specifications are subject to be changed for enhancement, with out notice.

Manufacturer **ELMEX Limited**

2-2 Ichigayasadohara-cho, Shinjuku-ku, Tokyo 162-0842 JAPAN
TEL : 081-3-5229-7911 FAX : 081-3-5261-4130
URL : <http://www.elmex.co.jp> e-mail address : sales@elmex.co.jp

Operation

MT-11PBS :9ml of PBS in a cup for serial dilution.

1. Sterilize the aluminum lid with alcohol and a flame.
2. Make two holes by an opener (Option. Code No.: OS-01) on the aluminum of each cups.Two holes are one for "sample inlet" and the other for "sample suction" to avoid contamination.

<Point> The rest of cups which aluminum lid is unopened can be use next.

<Note> When you use it, please sterilize it with this way before.



Separate-reconnect-able cup

MV2-90PBS :90ml of PBS in a bottle for 10g specimen

1. Sterilize the aluminum lid with alcohol.
2. Open the aluminum lid and the entire PBS in a sterilized homogenize bag or lifter bag which has 10g specimen in it.
3. Use it as the 10 times of diluted sample, after homogenize by a homogenizer.

<Useful example:> In case of liquid or powdery specimen

Open the aluminum lid after sterilize with alcohol, put the specimen into MV2-90PBS bottle directly, then shake it with keeping the aluminum lid by fingers. (Refer to the right photo)



Useful example: put specimen into a bottle and shake.

MV-225PBS :225ml of PBS in a bottle for 25g specimen

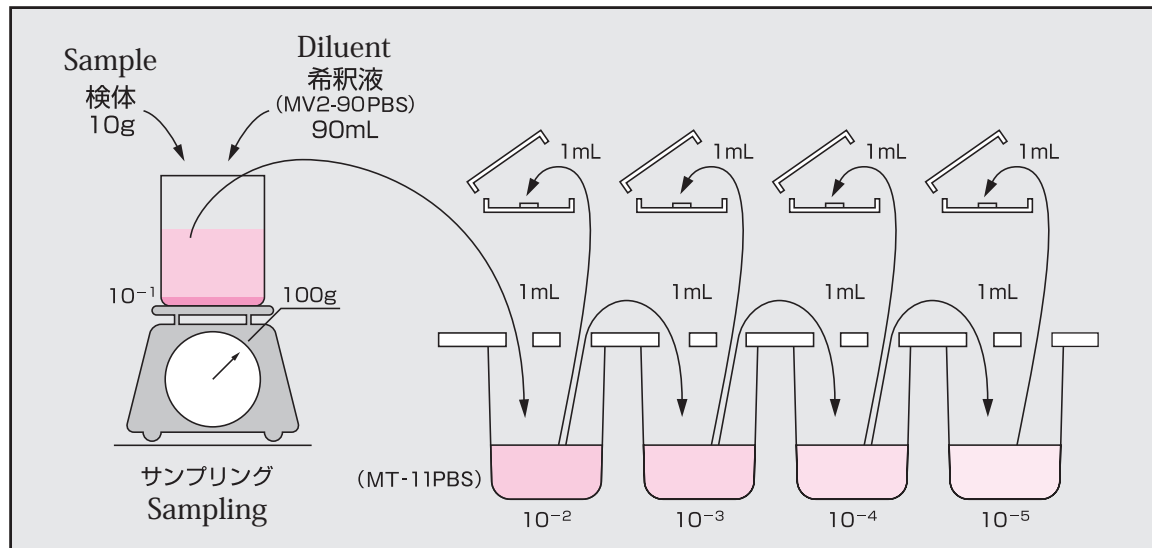
MV-225AP :225ml of Alkaline peptone in a bottle for 25g for Vibrio parahemolyticus test specimen. Operation for MV-225 and MV-225AP is as same as MV2-90PBS



MV2-1000PBS connecting image

MV2-1000PBS :1,000ml of PBS in a bottle for Dilution system "DT cube".
Sterilize the cap with alcohol before connect DT cube.

Preparation and Serial dilution with MT-11PBS



Code No.	Specifications	Specimen	Qty /box	Package materials
MT-11PBS	PBS-0.9% NaCl (Phosphate Buffered Saline)	9mL for serial dilution	1mL 128 cup	Cup:PP, Lid:Aluminum
MV2-90PBS	Formula (g/1000ml pure water)	90mL for 10 times dilution	10g 40 pc	Bottle:PE, Lid:Aluminum
MV-225PBS	Sodium chloride (NaCl) 0.85g	225mL for 10 times dilution	225g 40 pc	Bottle:PE, Lid:Aluminum
MV2-1000PBS	Disodium hydrogenphosphate 12-water (Na ₂ HPO ₄ ·12H ₂ O)··· 0.0785g	1,000mL for dilution system	10 pc	Bottle:PE, Cap:PP
MV-5000PBS	Potassium dihydrogenphosphate (KH ₂ PO ₄) 0.0127g	5,000mL for dilution system	2 pc	Bottle:PE, Cap:PP
MV-225BPW	Buffered peptone water-1.0% peptone	225mL for 10 times dilution of <i>Salmonella</i> , <i>Staphylococcus aureus</i>	225g 40 pc	Bottle:PE, Lid:Aluminum
MV-225MRD	Muximum recovery diluent-0.1% peptone	225mL for 10 times dilution	225g 40 pc	Bottle:PE, Lid:Aluminum
MV-225AP	Alkaline peptone-2.0% NaCl	225ml for 10 times dilution of <i>Vibrio parahemolyticus</i>	225g 40 pc	Bottle:PE, Lid:Aluminum

◆Specifications are subject to be changed for enhancement, with out notice.

Manufacturer **ELMEX Limited**

2-2 Ichigayasadohara-cho, Shinjuku-ku, Tokyo 162-0842 JAPAN
TEL : 081-3-5229-7911 FAX : 081-3-5261-4130
URL : <http://www.elmex.co.jp> e-mail address : sales@elmex.co.jp

for preparing specimens
Automatic weighing and dispensing device

Pro-media DT cube



An example with nozzle installed on the left



An example with nozzle installed on the right

Unique compact design

The product is shaped like a super-small cube and very lightweight. It is easy to move when cleaning or changing the layout of the inspection room, and performing other operations.
The dispensing nozzle can be installed on either the right or left side according to the inspection room layout. (The above photos show two examples.)
It can be combined with a foot switch (optional) and used on a clean bench.

Use of air compression

The product achieves a dispensing speed that is 20% higher than conventional models manufactured by Elmex. The product produces smooth and quiet sounds in dispensing. After dispensing, the product stands still and does not drip afterwards.

Compatible with both disposable or homemade diluents

Disposable diluent: The sterilized diluent MV2-1000PBS, MV-5000PBS exhibits its performance in terms of saving laboratory labor and examining samples submitted on short notice.
Homemade diluent: The product can be connected to a sterilizable bottle (SB4000C) for using homemade diluent.

Two dispensing modes

Automatic dilution : A ten-time diluent is automatically dispensed to the sample. The sample can therefore be weighed and dispensed without considering its weight.
Quantified dispensing : The desired amount of diluent can be dispensed regardless of the sample's weight.

Data output capability (optional)

A special-purpose printer can be used for printout whenever necessary.

Enhanced user-friendliness with a foot switch (optional)

Product name	Automatic dispensing device Pro-media DTcube
Product code	DT-3
Specimen weight	0.5 to 1,000g/dilution factor
Dispensing amount	5 ~ 1,000mL
Injection precision	±0.8g
Injection speed	7sec (when injecting 90mL)
Dilution factor	2 to 999 times
Scale weighing	0.1 ~ 1,500g
Specific gravity setting	0.7 ~ 1.4
Power supply	AC100V 50/60Hz 30W
Weight	7.5kg
Dimensions	W320×D280×H270mm (only the device proper)
Accessories	Dispensing nozzle x 1pc.
	Silicon tube x 2 pcs.
	Electronic scale x 1unit
	DT cube stand (SUS) x 1unit
	MV2-1000PBS liquid feeder x 1set



Sterilized diluent MV2-1000PBS

Sterilized diluent MV-5000PBS

Bottle for sterilize SB4000C

< Options >

Product name	Code #	Specifications	Capacity
Data output printer	PA030	Thermal printer, Centronics cable, AC adaptor, thermosensitive paper 80 W x 15 m/roll	1set
Foot switch	PA037		1case
Bottle for Sterilize	SB4000C	Bottle capacity, 4 liters; injection/extraction cap, disc filter, silicon tube (The bottle can be completely sterilized by connecting the nozzles and liquid feed tube.)	1case
Sterilized dilution water	MV2-1000PBS	Phosphate-buffered saline, 1 liter x 10 pcs.	1case
	MV-5000PBS	Phosphate-buffered saline, 5 liter x 2 pcs.	1case

Specifications are subject to change without notice for enhancement.

For a homogenizer, we recommend that you order Elmex's Pro-media SH-II M. For homogenized bags and filter bags, we recommend that you order PYXON. These bags are divided into small lots and zippered, thus are very handy.

Manufacturer **ELMEX Limited**

2-2 Ichigayasadohara-cho, Shinjuku-ku, Tokyo 162-0842 JAPAN
TEL : 081-3-5229-7911 FAX : 081-3-5261-4130
URL : <http://www.elmex.co.jp> e-mail address : sales@elmex.co.jp

Sterilized filter bag for Homogenize

PYXON

ピクソン

sereise

(PATENTED)

Adoption of high density filter

By using a fine filter, we can remove sample's residue very well. It is ideal for samples that tend to remain residue such as boiled egg or tofu. The area of the filter is wide, and sampling can be quickly taken after homogenization. More accurate colony counting is possible.

Wide aperture

Easier to open with a wide filter opening. Sample inlet is also wide.

Write-on

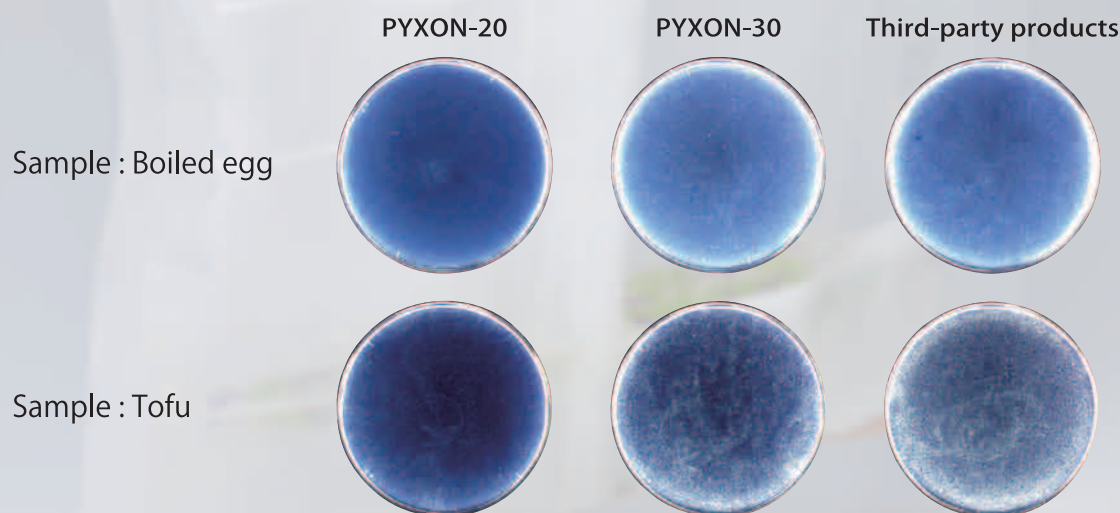
It's easy to write data on the white print with an ordinary ballpoint pen, pencil, or felt-tip marker.

Sanitary portion pack

All items are packed by zip bag.



Comparison of filter filtration degree (30 seconds homogenized)



The cloudy white is the residue. Picture taken in the dark field lighting.

Manufacturer **ELMEX Limited**

2-2 Ichigayasadohara-cho, Shinjuku-ku, Tokyo 162-0842 JAPAN
TEL : 081-3-5229-7911 FAX : 081-3-5261-4130
URL : <http://www.elmex.co.jp> e-mail address : sales@elmex.co.jp

How to use of PYXON-20

MAKE A SLIT FOR MICRO PIPETTE

For dispenser (micro pipette) use, slit the bag with picking Pull-Tab and down until guide line.

Pull-down-guide-lines

The upper line is for 250mL / The lower line is for 100mL

In case of 10g specimen and 10 times sterilized water added, the water level will be about 4cm under the lower line.

Be careful

Do not slit down under the guide line. Slit straight when you slit pull-tab down.

DISPENSER (MICRO PIPETTE) OPERATION

Insert your Dispenser from the Slit made as the above way, and suck specimen up.

It does not contaminate the body of the micro pipette.




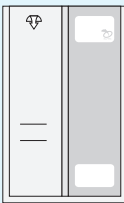
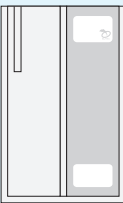
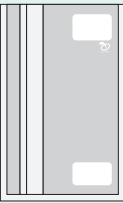

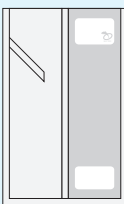
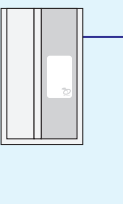
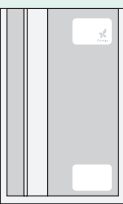
Magic cut serie

YOU CAN CUT BY HANDS

There is a magic cut processing on one side of the bag, you can cut by hand from anywhere. Insert the micropipette from the cut slit, and suck specimen up. It does not contaminate the body of the micro pipette.

■ Magic cut is a Registered trademark of Asahi Kasei Pax Corp.



Sterilized homogenize bag	Sterilized Filter bag with fine filter		Sterilized Filter bag with normal filter
 <p>PYXON-10 Qty/Box: 1,000pcs SIZE: 180×300mm Capacity: 400mL Code No: PX0010</p> <p>Plain homogenize bag Without filter</p>	 <p>PYXON-20 Qty/Box: 500pcs SIZE: 190×300mm Capacity: 400mL Code No: PX0020</p> <p>Pull-down type For a micro-pipette use</p> <p>Open a slit in a part of the bag with picking pull-tab, insert the micropipette, and sucking the specimen up.</p>	 <p>PYXON-20P Qty/Box: 500pcs SIZE: 190×300mm Capacity: 400mL Code No: PX0020P</p> <p>Plain type For measuring pipette use</p> <p>Simple filter bag</p>	 <p>PYXON-30 Qty/Box: 500pcs SIZE: 190×300mm Capacity: 400mL Code No: PX0030</p> <p>Plain and economical type For measuring pipette use</p> <p>Due to the filter is inside the bag, it is easy to visually check the suction state at the pipette operation.</p>
 <p>PYXON-10C Qty/Box: 1,000pcs SIZE: 190×298mm Capacity: 400mL Code No: PX0030</p> <p>Plain homogenize bag With Magic Cut, Without filter</p> <p>Magic cut processing is given and it can be cut with hands. You can insert the pipette from where it was cut, and suck the specimen up.</p>	 <p>PYXON-20S Qty/Box: 500pcs SIZE: 190×300mm Capacity: 400mL Code No: PX0020S</p> <p>For Spiral plating method use</p> <p>Use for transferring specimen to another sterilized container. With sealing for stopping the residue of specimen.</p>	 <p>PYXON-20M Qty/Box: 1,000pcs SIZE: 190×300mm Capacity: 400mL Code No: PX0020M</p> <p>Small size filter bag</p> <p>Use for small amount (5g etc.) specimen.</p>	 <p>PYXON-30C Qty/Box: 500pcs SIZE: 190×298mm Capacity: 400mL Code No: PX0030C</p> <p>Plain and economical type With Magic Cut</p> <p>Magic cut processing is given and it can be cut with hands. You can insert the pipette from where it was cut, and suck the specimen up.</p>

◆ Sterilization : Gamma irradiation

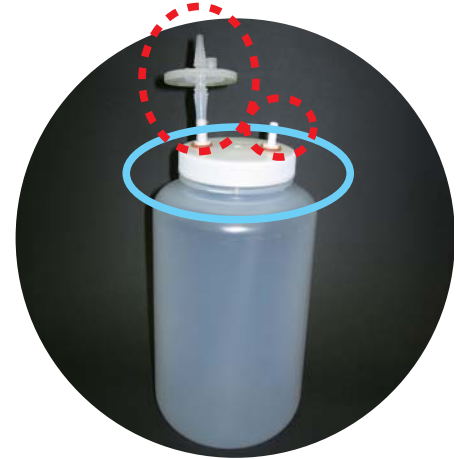
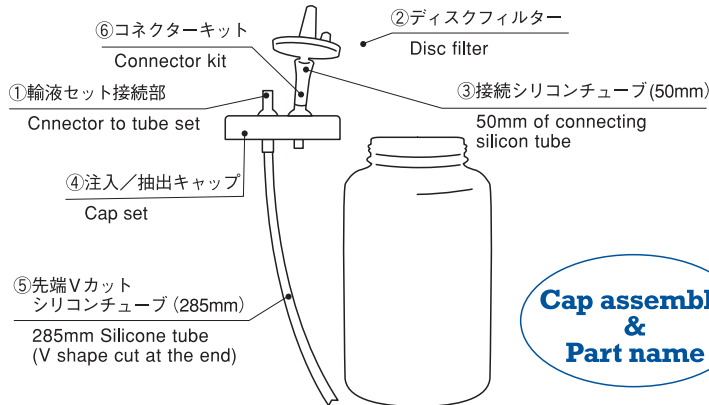
◆ Specifications are subject to be changed for enhancement, without notice.

Manufacturer **ELMEX Limited**

2-2 Ichigayasadohara-cho, Shinjuku-ku, Tokyo 162-0842 JAPAN
TEL : 081-3-5229-7911 FAX : 081-3-5261-4130
URL : <http://www.elmex.co.jp> e-mail address : sales@elmex.co.jp

Container for Autoclave SB4000C

- **Ready to use by assembling with required parts completely.**
- **For making dilution water or broth.**
- **Useful for "DT cube" or "AP-0104" operation.**



Bottle Entire view and aluminium wrap area

Component & specifications			Cap assembly composition	Component & specifications			
Code No.	SB4000C			Option	Connector kit ⑥	2 pcs
Material	Bottle	Polypropylene	Cap ϕ 100mm ④		1 pc	
Dimension	Diameter	ϕ 150mm	Option	Disc filter & connection silicon tube ② + ③	1 pair	
	Total height	400mm		Silicon tube (ϕ 4.8, t1.6mm, 285mm) ⑤	1 pc	
Capacity	4 liter			Part name	Above drawing No.	Code No.	Descriptions
				Connector kit	⑥	SB0010	2 pcs
				Silicon tube	⑤	PA024	d ϕ 4.8 D ϕ 8.0 X 10m
				Connection silicon tube	③	PA027	d ϕ 5.0 D ϕ 9.0 X 1m
				Disc filter	②	SB0001	1 pc
				Specifications: * Autoclavable * 0.22 μ m of pore size * 19.6 cm ² (ϕ 5cm) of effective area.			

◆ Specifications are subject to change without notice for remodeling or quality enhancement.

Instructions

- 1 Fill pure water.
- 2 Add reagents required.
- 3 Wrap two areas, which are a red circle (or the end of Nozzle after connecting "Nozzle & tube set" of DT cube or AP-001) and a pink circle of above picture, by aluminium foil.
- 4 Loosen a cap and wrap around the area of blue circle of above picture, by aluminium foil.
- 5 Put the entire bottle in an autoclave and sterilize.

Cautions

- ▲ **Hold firmly the area 4 by both hands while screwing or loosing the cap.**
 - ▶ Handling at the area ①, ②, ③ and ⑥ may be made destruction or damage.
- ▲ **"Delay time*" by autoclave sterilization occurs with the specification of equipment and fluid volume. Be sure to confirm with the instructions manual of your autoclave before use.**
 - ▶ "Delay time*" means "the reaching time of temperature" from "an autoclave sensor at 121°C" until "the center of a sterilization-container at 121°C".
 - <Example> In case of the autoclave model SV-2402 which inside capacity is 23 liter, the delay time is about 1 hour. So setting time for sterilization will be 1 hour and 20 minutes.
- ▲ **Do not sterilize with the cap of container closed, or liquid may spout or a container may transform.**
- ▲ **Do not put two SB400C bottles into an autoclave vertically or by force.**
 - ▶ Or the mouth of bottle may transform and not connect with the tube set of DT cube correctly. I will be a cause of bad performance.
- ▲ **Be careful for scald when you pick the bottle up from an autoclave. Do not take the bottle from an autoclave at high temperature.**
 - ▶ Even if the inside temperature of autoclave is at 80°C, the inside temperature of bottle would be at 99°C, and it may occur dangerous bumping. To use a magnetic stirrer would be better to avoid this bumping.
- ▲ **Do not use the cracked bottle.**
- ▲ **When you throw the used bottle and parts away, please ask the regulations of your area or country.**

Manufacturer **ELMEX Limited**

2-2 Ichigayasadohara-cho, Shinjuku-ku, Tokyo 162-0842 JAPAN
TEL : 081-3-5229-7911 FAX : 081-3-5261-4130
URL : <http://www.elmex.co.jp> e-mail address : sales@elmex.co.jp

Homogenizer Pro·media SH-IIM

(Patented)

The body is made of sturdy stainless steel!



Impressive homogenize power!

The product comes with an original homogenize paddle. It incorporates blades made of rigid rubber. The SH-IIM effectively breaks sliced ham, fish paste, and lettuce, which are difficult to homogenize with flat paddles.

Homogenization twice as quick!

The product performs powerful homogenize, so that homogenization occurs twice as fast compared with conventional models. This helps accelerate routine work.

Its detachable door comes with a window.

The stainless steel door can be washed with water, and thus offers a sanitary design. The see-through window installed in the door lets you observe the "digestion" status of samples without opening the door.

Reliable Japanese-made product!

This SH-IIM takes full advantage of the essence of Elmex's expertise. It meets your needs for speedy maintenance.



Look at the right photo to observe the difference in breaking force.

Samples that are difficult to homogenize with conventional flat panel paddles can now be quickly broken into pieces by using the homogenize paddle as you see here. (Comparison is made with a conventional model manufactured by Elmex.)

Machine specifications

Product name : Homogenizer Pro·media SH-IIM	Power supply : AC100V 50/60Hz	Weight : 17.0kg
	Power consumption : 100W	Dimensions : W255×D345×H345mm
Model : SH-IIM (SH-2M)	Timer : 15, 30, 60sec, manu (10 consecutive minutes)	

※Specifications are subject to change without notice, for remodeling or quality enhancement.

For homogenization bags, we recommend that you specify Elmex's PYXON. All bags are divided into small lots and zippered.

Product name	Code #	Filter	Specifications	Capacity	Quantity	Dimensions
Sterilized homogenization bags	PX0010	No		400ml	1,000pcs. (20pcs.×50)	180×300mm
Sterilized filter bag PYXON-20	PX0020	Yes	Pull-down type for micro pipette	400ml	500pcs. (25pcs.×20)	190×300mm
Sterilized filter bag PYXON-20S	PX0020S	Yes	Type designed for spiral plating	400ml	500pcs. (20pcs.×25)	190×300mm
Sterilized filter bag PYXON-20P	PX0020P	Yes	Plain type for measuring pipette	400ml	500pcs. (20pcs.×25)	190×300mm
Sterilized filter bag, mini PYXON-20 mini	PX0020M	Yes	Plain type for small-quantity samples	80ml	1,000pcs. (20pcs.×50)	114×190mm

Manufacturer **ELMEX Limited**

2-2 Ichigayasadohara-cho, Shinjuku-ku, Tokyo 162-0842 JAPAN
TEL : 081-3-5229-7911 FAX : 081-3-5261-4130
URL : //www.elmex.co.jp e-mail address : sales@elmex.co.jp

Medium with an enzyme substrate for simultaneous inspection of coliform group and *E. coli* Pro-media **ST-SSP** (designed specifically for SWAB TEST)

● **ST-SSP is an X-GAL MUG medium designed specifically for SWAB TEST Pro-media ST-25 and ST-26.**

● **Samples can be cultivated in a SWAB TEST container.**

● **Reduced cost and waste**

- Using this small (polyethylene) container that is 4.5cm high reduces waste.
- Because this medium is sterilized, it requires no pre- or post-operations such as preparing a medium or test tube.
- At *E. coli* inspection, be sure to use the BL-02 (an ultraviolet lamp with 366nm).



Sterilized liquid medium Pro-media ST-SSP



SWAB TEST Pro-media ST-25



Black light BL-02



Product name	Code #	Specifications	Quantity
Sterilized liquid medium Pro-media ST-SSP	ST-SSP	Lauryl sulfate X-GAL MUG medium for 5-ml sample	300pcs. (10pcs./aluminum x 30)
SWAB TEST Pro-media ST-25	ST-25	Phosphate-buffered saline (10ml)	400pcs. ((10pcs./small case x 10)/shrink x 4)
SWAB TEST Pro-media ST-26	ST-26	Phosphate-buffered saline 10ml (extendible swab)	400pcs.((10pcs./small case x 10)/shrink x 4)
Black light	BL-02	For <i>E. coli</i> inspection, wavelength : λ 366nm	1pc

※Specifications are subject to change without notice, for remodeling or quality enhancement.

How to use this product

Wipe the sample off with SWAB TEST Pro-media ST-25 or ST-26.

- 1) Write the ID information (such as the inspection site and date) on the container label.
- 2) Open the cap of the SWAB TEST and squeeze the swab from outside the container.
- 3) Wipe the location to be inspected.
- 4) Close the container with the cap that comes with the swab used for wiping, then agitate and dilute the sample.
- 5) Use the mixture as a specimen for inspection.

Inspect for coliform group and *E. coli*.

- 1) Take the specimen prepared as described above and use it in general live bacteria or for similar purposes. Then retain 5ml in the ST container and dispose of all the rest.
- 2) Open the top lid from the cap of the SWAB TEST, then inject it with ST-SSP.
- 3) Cultivate all of the SWAB TEST housed in the container.
Cultivation time : 24hours
Cultivation temperature
- 4) Judgment
Coliform group-positive: The liquid inside turns blue.
E. coli-positive: When irradiated with a black light (366nm), the liquid inside turns fluorescent.

※ *E. coli* can be observed under indoor light.



Squeeze the cotton.



Wipe the location.



Agitate and dilute the liquid (thus completing the specimen).



Open the top lid and inject ST-SSP.



Negative



Coliform bacilli-positive after cultivation (at 36°C±1°C for 24 hours)



E. coli-positive

Manufacturer **ELMEX Limited**

2-2 Ichigayasadohara-cho, Shinjuku-ku, Tokyo 162-0842 JAPAN
TEL : 081-3-5229-7911 FAX : 081-3-5261-4130
URL : <http://www.elmex.co.jp> e-mail address : sales@elmex.co.jp



Hygiene & Environmental Testing Swab kit

Hygiene & Environmental testing Swab kit



capper + stick x 1 capper + stick x 2

Accessory: Extension tool

Swabstar®

Specifications

Code No.	Liquid	Liquid	Pc/box	irradiation	Material				storage
					Swab head	stick	Cap	Bottle	
SS-01-400	Phosphate Buffered Saline (PBS)	10mL	400	Gamma ray	Polyester	Polypropylene	Polypropylene	Polyethylene	2~25°C

*Specifications are subject to be changed for enhancement, without notice. *This product is for environmental inspection (Swab). Please do not use in any applications.
 *When using culture medium put in a Swab-Star container, please sterilize it before discard. *When discard, please follow your municipality's instructions

Accessory

Code No.	Product name	Pc/pack	Length (mm)	Material
SE-4	Extension tool	4 pair (Capper x 4pcs, Stick x 4pcs)	Capper + Stick x 1 pcs = 155 Capper + Stick x 2pcs = 280 Capper + Stick x 3pcs = 405	ABS

*Specifications are subject to be changed for enhancement, without notice.

ELMEX Ltd. 2-2, Ichigayasadohara-cho, Shinjuku-ku, Tokyo 164-0842
 Tel:+81-(0)3-5229-7911 www.elmex.co.jp



All in One

Ready to use self contained swab and diluent system

Swab kit tool "Swabstar" will contribute to the confirmation to effect of the chapter 11, "Cleaning and sanitizing" in FSSC22000, combined "ISO/TS22002-1:2009" and PAS223.



Ready to use.

Start anytime

Unique Swab Head

Polyester

Collection efficiency of bacteria compared to the rayon will be up by about 1.5 times. (ELMEX ratio)

Thin flat design

is effective to sampling for narrow gap places as well as a flat surface area.

With connecting an optional

Extention tool (patent pend)

Stick is able to concatenate 1, 2 or 3 pieces.



Hand and fingers



Knives

For Allergen inspection.

Effective to sampling for hard-to-reach places, such as deep of machinery or high place.



All In One

Ready to use self contained swab and diluent system

Swing stirring after sampling.



Carrying Easy !

No pipetting require.

Flip open the lid then invert and inoculate to media using the measuring gauge on the side by squeezing.



Hygiene & Environmental Testing Pro-media **SWAB TEST**

(Patented)

Diluent

PBS

Phosphate Buffered Saline

BPW

Buffered Peptone Water

MRD

Maximum Recovery Diluent



Above medium is 3M Petrifilm

All in One

Ready to use self contained swab and diluent system.

No pipetting require

Flip the lid and inoculate media using the measuring gauge on the side.

Extendable Swab

ST-26PBS
ST-26BPW
For hard to reach places.

No test tube require

Incubate the entire container after added a media ST-SSP for coliform group test.

Compact incubator allows swabs to be readily processed on-site.

Manufacturer **ELMEX Limited**

2-2 Ichigayasadohara-cho, Shinjuku-ku, Tokyo 162-0842 JAPAN
TEL : 081-3-5229-7911 FAX : 081-3-5261-4130
URL : <http://www.elmex.co.jp> e-mail address : sales@elmex.co.jp

Basic Operation



ST-25

Squeeze swab bud to remove excess diluent.



ST-26

Swab.



Mix to suspend.



Squeeze to dispense.

Suggested Use

<Ex.1> Quantitative test

Flip open the lid, invert and inoculate by squeezing onto your media.

Each Swab test contains 10mL of diluent and the dispensed volume can be measured using the gauge on the side of the bottle.

Alternatively, one drop is 50µL or 20 drops per mL. The screw cap can be removed to allow the pipetting directly from the tube.

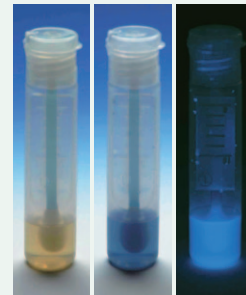


<Ex.2> Qualitative test (Presence or Absence)

For Coliform group test, simply add the ST-SSP reagent directly into Swab Test tube via the dispensing nozzle. Incubate for 24 hours at 36°C.



<Result>



Coliform G.	-	+	+
<i>E.coli</i>	-	-	+

※ Refer to its instruction about culture media

Code	ST-25PBS	ST-26PBS	ST-25BPW	ST-26BPW	ST-25MRD
Swab Shaft	Standard	Extendable	Standard	Extendable	Standard
Diluent	Phosphate Buffered Saline (0.85% NaCl)		Buffered Peptone Water (1.0% Peptone)		Maximum Recovery Diluent (0.1% Peptone)
Quantity/box	400pcs (10pcs×40)				
Storage	Room temperature(2~25°C), protected from direct light				
Shelf life(Unpacked state)	Two (2) years from production date.				
Sterilization	Gamma irradiation				

◆ Specifications are subject to be changed for enhancement, with out notice.

Manufacturer **ELMEX Limited**

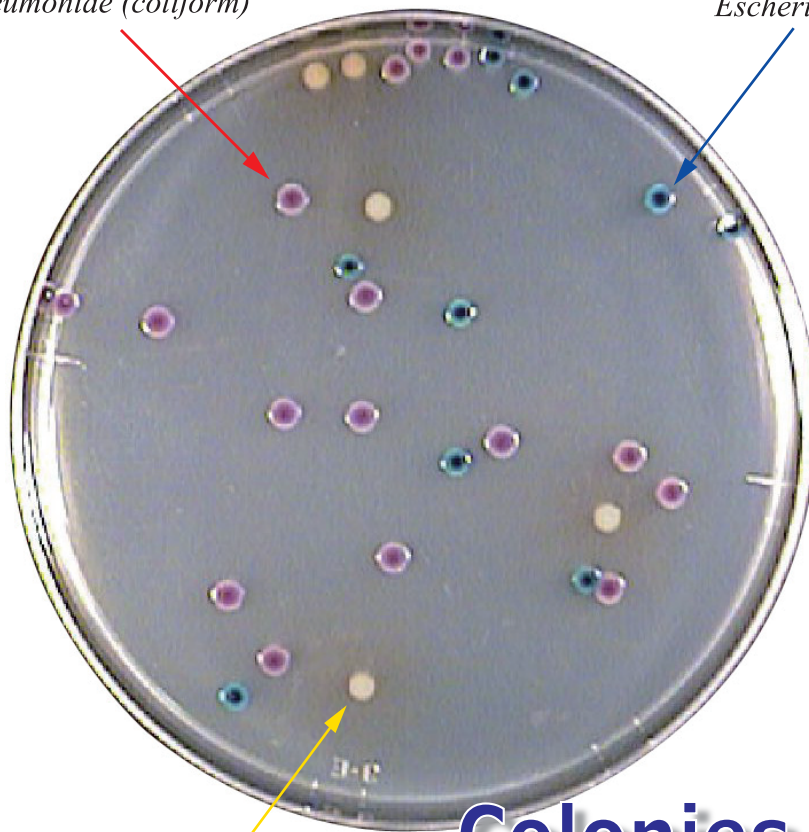
2-2 Ichigayasadohara-cho, Shinjuku-ku, Tokyo 162-0842 JAPAN
TEL : 081-3-5229-7911 FAX : 081-3-5261-4130
URL : <http://www.elmex.co.jp> e-mail address : sales@elmex.co.jp

Medium with an oxygen substrate for simultaneous inspection of coliform bacilli and *E.coli*
Sodium Lauryl Sulfate Magenta-GAL · X-GLUC Agar

Listed In Japanese Food Hygiene Inspection Guidelines (2004)

Klebsiella pneumoniae (coliform)

Escherichia coli



Proteus mirabilis (Other enterobacteria)

Colonies are distinctly colored

E.coli positive

β -glucuronidase is a specific enzyme found only in *E.coli* among enterobacteria, except for *Salmonella* and *Shigella*. It is present in 95% of all *E.coli*. β -glucuronidase hydrolyzes the coloring enzyme-substrate complex X-GLUC, creates blue ~ purplish-blue.

Coliform positive

β -galactosidase produced by coliform hydrolyzes the coloring enzyme-substrate complex MAGENTA-GAL, creates red ~ purplish.

Precaution

All gram-negative enterobacteria, except for coliform, form white colonies. This agar uses sodium lauryl sulfate as a gram-positive bacterial inhibitor. Not all of the enterobacteria are fostered.

- ★ After Use, sterilize the agar before disposal.
- ★ Specifications are subject to be change without notice, for remodeling or quality enhancement.

Coliform and *E.coli* are colored on a red and blue transparent agar, respectively, thus allowing for easy identification.

Product Name	Pro·media AGAR TRICOLOR	
Code No.	XMA-01N	XMA-400
Volume	7.85g / pouch × 40	400g / bottle
Recipe	Sodium Lauryl Sulfate Magenta-GAL, X-GLUC, Others	
Instruction to use: Dissolve 1 bag (7.85g) in 200mL of purified water under heat or perform autoclave sterilization.		
Sake Culture: Dispense and dilute a medium in a Petri dish filled with a specimen at 50°C or below.		
Smear culture: Drop a specimen on the surface of a medium dispensed and gelled to leave a uniform coat of smears.		
C u l t i v a t e : Carry out for 18 to 24 hours at 35-37°C.		

Manufacture **ELMEX Limited**

2-2 Ichigayasadohara-cho, Shinjuku-ku, Tokyo 162-0842 JAPAN
TEL : 081-3-5229-7911 FAX : 081-3-5261-4130
URL : <http://www.elmex.co.jp> e-mail address : sales@elmex.co.jp

Sterilized filter bag for Homogenize **PYXON-20** sereise

(Worldwide PATENT Pending)

<MORE THAN LESS LEES> <EASY TO USE PIPET> <DISPENSER PIPETTE USABLE> <INEXPENSIVE>

WIDE MOUTH

Easier to open with a wide filter opening ! Sample inlet is also wide.

DISPENSER (Micro pipette) CAN BE USED

MAKE A SLIT

For dispenser (Micro pipette) use, slit the bag with picking Pull-Tab and down until Pull down guide line where is printed at the left bottom for pull down aim.

Pull down guide lines

The upper line is for 250ml

The lower line is for 100ml

In case of 10g specimen and 10 times sterilized water added, the water level will be about 4cm under the lower line.

Be careful

Do not slit down under the line. Slit straight when you slit pull-tab down.

DISPENSER OPERATION

Insert your Dispenser from the Slit made as the above way, then, suck specimen up.

WRITE- ON

It's easy to write data on the white print with an ordinary ballpoint pen, pencil, or felt- tip marker.

SANITARY PORTION PACK

All items are packed by zip bag.



SPECIFICATIONS

Product name	Code No.	Specifications	Qty/box	Bag size	Capacity
Sterilized homogenize bag	PX0010	Plain homogenize bag without Filter.	1,000pcs	180×300mm	400ml
Sterilized filter bag	PX0020	Pull- down type for a micro- pipette use	500pcs	190×300mm	400ml
	PX0020P	Plain type for a measuring pipette use	500pcs	190×300mm	400ml
	PX0020S	For Spiral plating method use	500pcs	190×300mm	400ml
	PX0020M	Small size filter bag with pull- down tab	1,000pcs	114×190mm	80ml

Specifications are subject to change without notice for remodeling or quality enhancement.

Manufacturer **ELMEX Limited**

2-2, Ichigayasadohara-cho, Shinjuku-ku, Tokyo 162-0842 Japan

Tel: 81-3-5229-7911 Fax: 81-3-5261-4130

URL://www.elmex.co.jp

Enzyme substrates broth for coliform group and *E.coli* test simultaneously

Sodium Dodecyl sulfate **X-GAL+MUG** Broth

Listed in "Standard Methods of Analysis
in Food Safety Regulation 2004"



Need no preparation

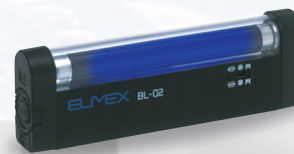
No Durham tubes nor water thermostat are required. Ready made sterilized kit saves your preparation time, such as autoclaving nor filling.

Room temperature storable

saves your refrigerator space.

Simultaneous test available

Coliform group turns to blue by X-GAL and *E.coli* fluorescence by MUG at 24 hours. No need EMB test.



BL-02



Paper disc

Code No.	Specifications	Qty/box
XM-30	10ml for 1ml sample	128cup
XM-31	Double density 10ml for 10ml sample	128cup
XM-32	Double density 5ml for 5ml sample	128cup
XM0001	8.5g/AL bag (preparation use)	20bag
BL-02	Black light 366nm for <i>E.coli</i> test	1pc
OS-01	Opener for XM-30, XM-31, XM-32	1pc
IND0101	Paper disc for Indole test	100pc
GLU0101	Paper disc for β -glucuronidase test	100pc

◆Specifications are subject to be changed for enhancement, with out notice.

Manufacturer **ELMEX Limited**

2-2 Ichigayasadohara-cho, Shinjuku-ku, Tokyo 162-0842 JAPAN
TEL : 081-3-5229-7911 FAX : 081-3-5261-4130
URL : <http://www.elmex.co.jp> e-mail address : sales@elmex.co.jp

How to use

- 1) Flame the surface of the aluminum sheet. It is not needed just after open the shrink-pack.
- 2) Make a hole on the surface of the aluminum sheet with an opener (OS-01) or a pipette.
- 3) Put sample into a cup through this hole.
<Sample volume> XM-30 : 1ml, XM-31 : 10ml, MX-32 : 5ml
- 4) Incubate it at 36°C ± 1°C for 24 hours.

- 4-cup-train of XM-30, XM-31, MX-32 are able to separate and reconnect, the unopened cups can be used next time.
- After use, sterilize before scrap.
- Use XM0001 after preparation. Put broth into test tube and sterilize.



Make a hole with OS-01



Put sample in

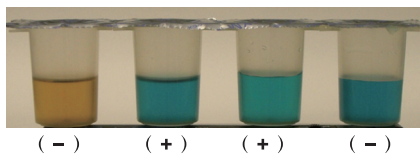
Technical information

Coliform group positive

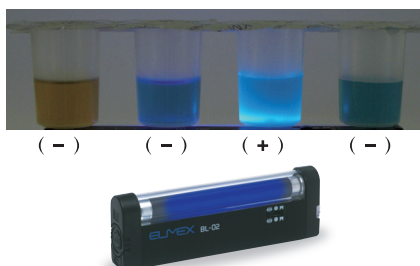
β -Galactosidase, an indicator of coliform group, is lactose fermentation enzyme which exists in coliform group that lactose is fermented. The enzyme substrate X-GAL is hydrolyzed by this lactose fermentation enzyme, and forms 5,5-Dibromo-4,4-dichloro indigo, thus turning blue~blue-violet.

<Note> Sample which has a large quantity of lactic acid bacteria will be a case to show a false-positive.

X-GAL



MUG



E. coli positive

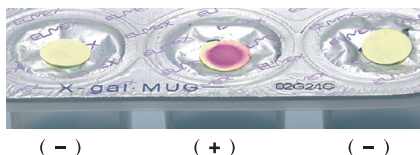
β -Glucuronidase, an indicator of *E. coli*, is a peculiar enzyme present only in intestinal bacteria except Salmonella and Shigella, and 95% of *E. coli* has this enzyme. When this β -glucuronidase is hydrolyzed by the enzyme substrate MUG, 4-Methylumbelliferon disengages and decomposes, then shows fluorescence with irradiating by UV light (wavelength : 366nm) . This fluorescence can be observed under indoor light.

Indole test

Tryptophanase activity or the ability to form indole from tryptophan is present in 95% *E. coli* strain. The indole test is an auxiliary test for detecting about 5% β -Glucuronidase-negative *E. coli* rarely present.

<Note> It shows positive in case that the other indole production bacteria exist or coexist with *E. coli*.

Indole

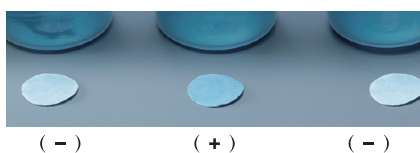


Indole vaporized reacts to the paper disc which impregnated p-Dimethylamino benzoic aldehyde and changes color into light-violet.

β -Glucuronidase test

Raw animal meat and fresh seafood contains β -Glucuronidase. A coliform group test based on a light-emitting enzyme substrate (MUG) may produce fluorescence thus showing a false-positive reaction, even if *E. coli* is not present. The β -Glucuronidase test is an auxiliary test for checking this false indication of positive reaction.

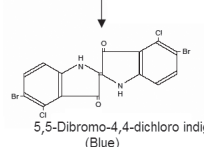
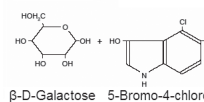
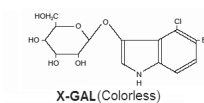
β -Glucuronidase



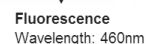
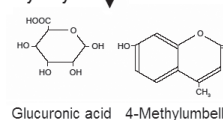
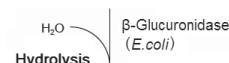
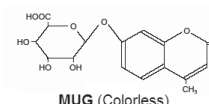
β -Glucuronidase reacts to the paper disc which impregnated X-GLUC and turns into blue.

Reaction

Coliform group reaction



E. coli reaction



Ingredient

	17.08g/1000ml pure water
Peptone	5.0g
Sodium chloride	5.0g
Monobasic potassium phosphate	2.0g
Potassium phosphate	2.7g
Sodium dodecyl sulfate	0.1g
Tryptophan	1.0g
Sorbitol	1.0g
Enzyme substrates X-GAL & MUG	0.28g
	pH6.8±0.2

◆Specifications are subject to be changed for enhancement, with out notice.

Manufacturer **ELMEX Limited**

2-2 Ichigayasadohara-cho, Shinjuku-ku, Tokyo 162-0842 JAPAN
TEL : 081-3-5229-7911 FAX : 081-3-5261-4130
URL : <http://www.elmex.co.jp> e-mail address : sales@elmex.co.jp